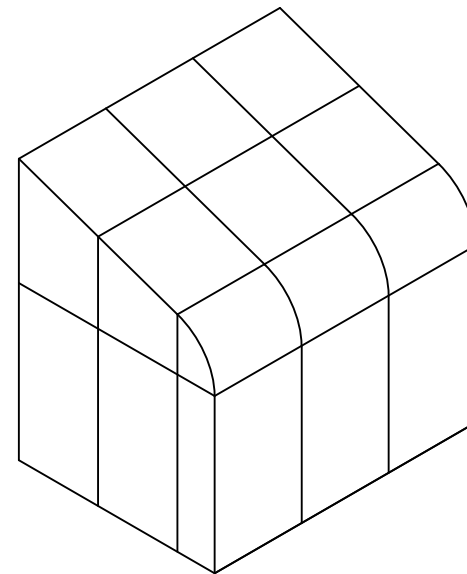
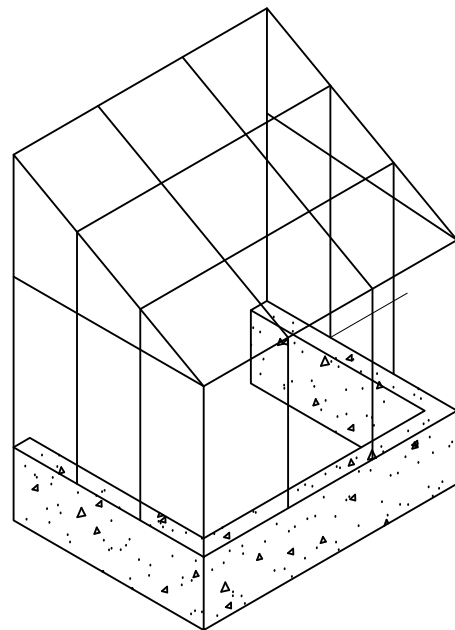


CURVED EAVE DOUBLE PITCH



CURVED EAVE LEAN-TO

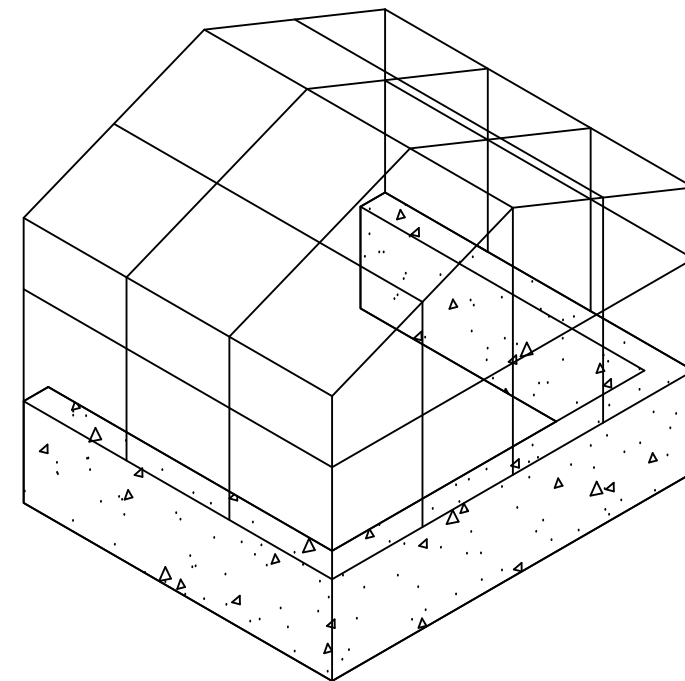


STRAIGHT EAVE LEAN-TO

ISOMETRIC ELEVATION

NOT TO SCALE

| UNIT INFORMATION |
|---|
| GLAZING SET UP: Opening for $\frac{3}{16}$ " Monolithic Glazing to 1" Insulated Glazing, Polycarbonate, or Solid Panel Infill |
| Decorative interior and exterior low profile grid option. |
| Custom Configurations Available Upon Request |
| Designed and Manufactured in the U.S.A. |



STRAIGHT EAVE DOUBLE PITCH

© 2017 Solar Innovations, Inc. - All Rights Reserved. These plans are the property of Solar Innovations, Inc. Any use or reproduction of these plans, in whole or in part, without the written permission of Solar Innovations, Inc. is forbidden.



SOLAR INNOVATIONS®
GLASS STRUCTURES

SI5000 Glazed Structures - Design Sample Options

ALL DATA CONTAINED HERE IN IS CONSIDERED COMPANY CONFIDENTIAL INFORMATION AND IS SUBJECT TO OUR CONFIDENTIALITY AGREEMENT AS SET FORTH ON OUR WEBSITE AT <http://www.solarinnovations.com/contact/>

ALL DRAWINGS
ARE VIEWED
FROM THE
EXTERIOR
LOOKING IN.

DRAWING
SCALE:
NOT TO SCALE

FLASHING TO BE DETERMINED
BASED ON EXISTING STRUCTURE

SUBSTRATE MATERIAL TO BE
DETERMINED BY OTHER

FLASHING TO BE DETERMINED
BASED ON EXISTING STRUCTURE

SUBSTRATE MATERIAL
TO BE DETERMINED BY
OTHER

BULBOUS CAP ATTACHED
WITH PRESSURE PLATE
(MS001234-00-00) AND
(2) #10 X 3/4" P.H. TEKS
PER PRESSURE PLATE

FLASHING TO BE DETERMINED
BASED ON EXISTING STRUCTURE

SUBSTRATE MATERIAL TO BE
DETERMINED BY OTHER

LEAN-TO RIDGE DETAIL

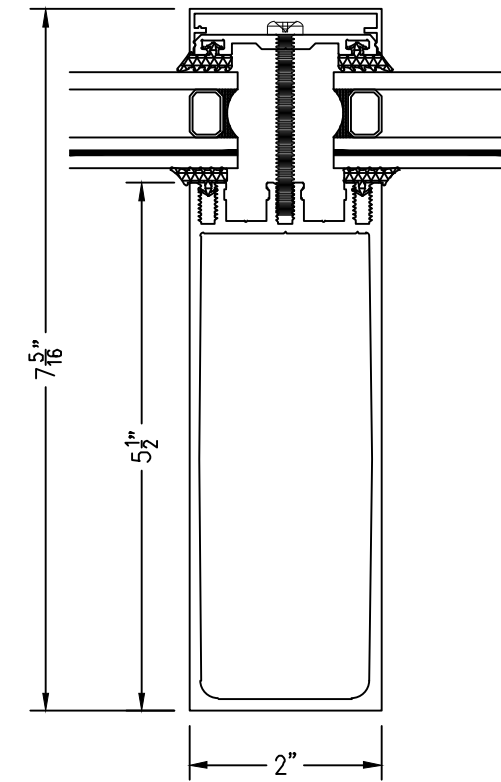
SUBSTRATE MATERIAL
TO BE DETERMINED BY
OTHER

FLASHING TO BE DETERMINED
BASED ON EXISTING STRUCTURE

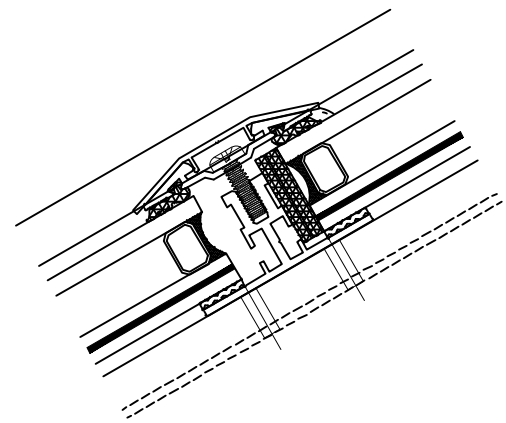
SUBSTRATE MATERIAL TO BE
DETERMINED BY OTHER

BULBOUS CAP ATTACHED
WITH PRESSURE PLATE
(MS001234-00-00) AND
(2) #10 X 3/4" P.H. TEKS
PER PRESSURE PLATE

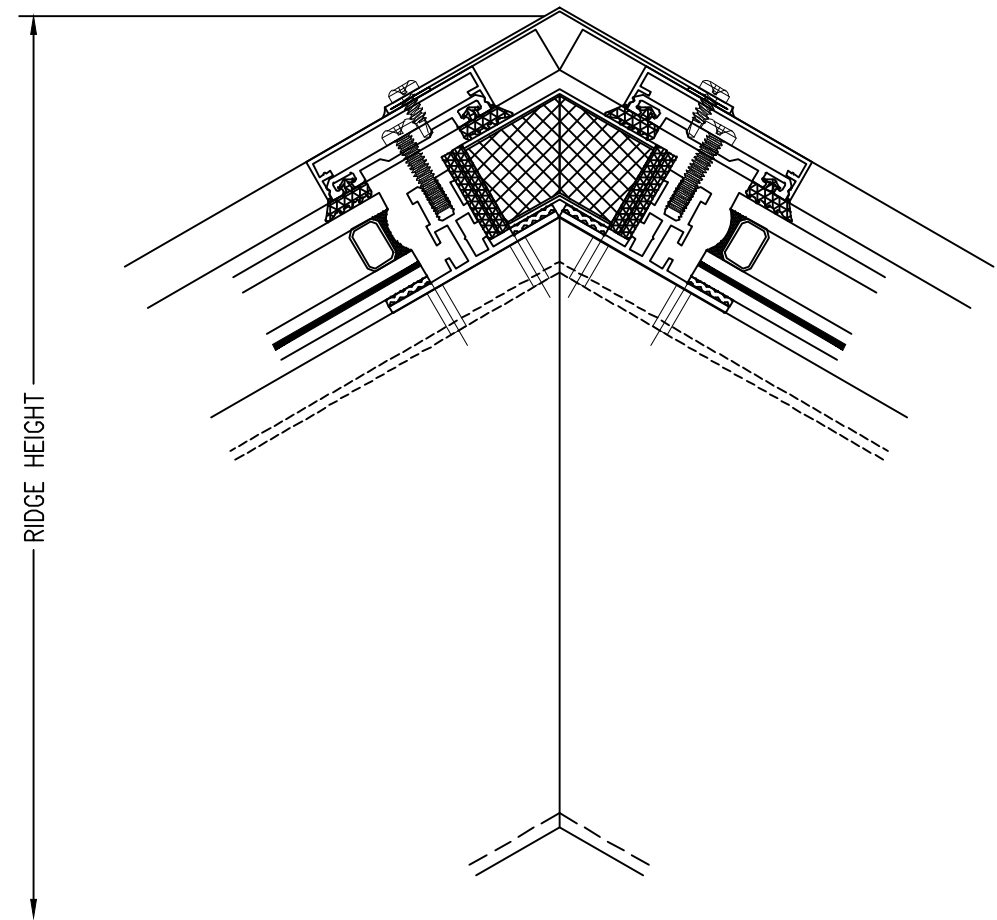
VERTICAL JAMB DETAIL



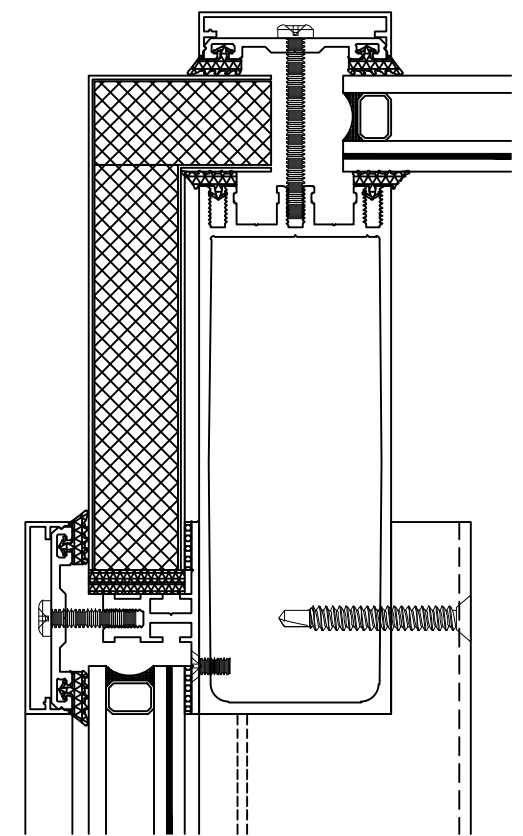
SLOPED JAMB DETAIL



SLOPED MUNTIN DETAIL

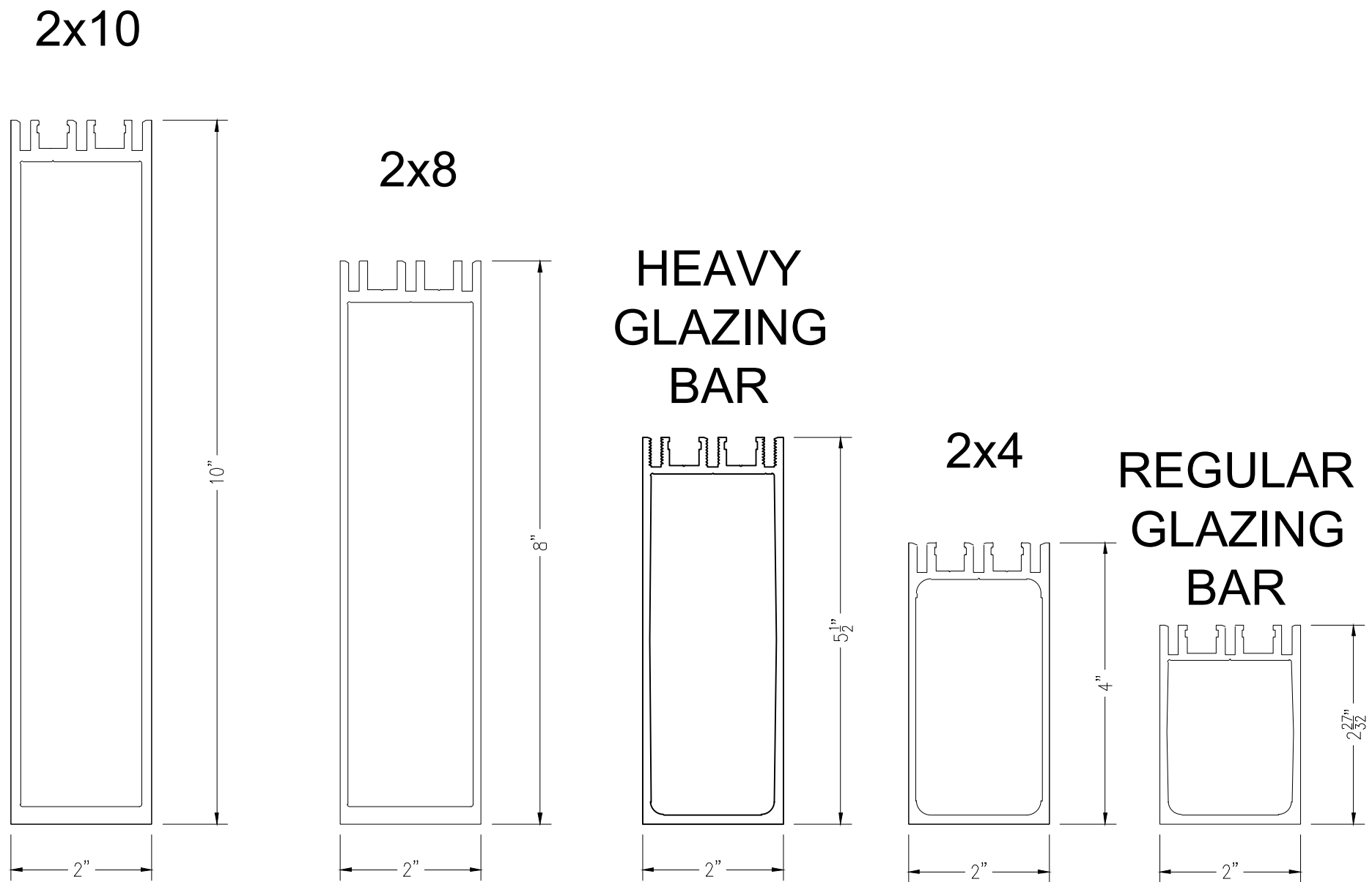


DOUBLE PITCH RIDGE DETAIL



SLOPED GABLE DETAIL

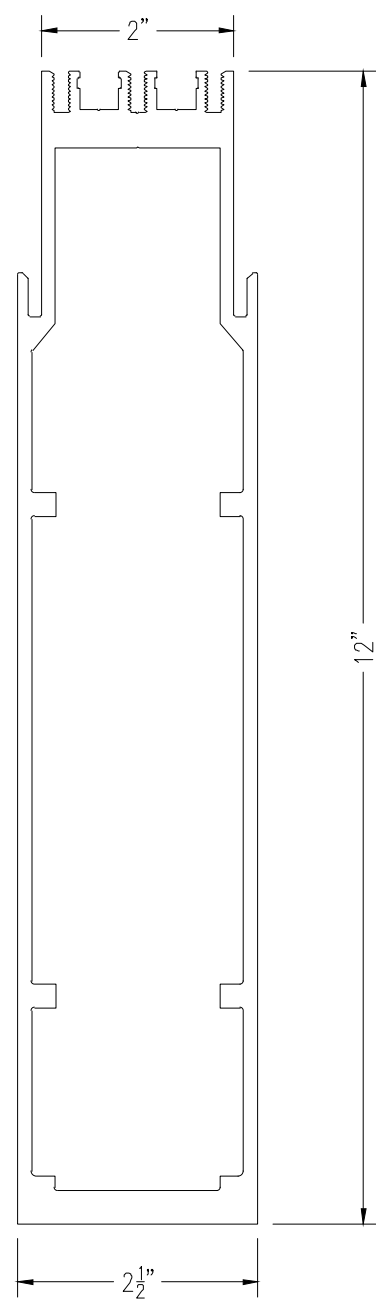
2" SYSTEM RAFTERS



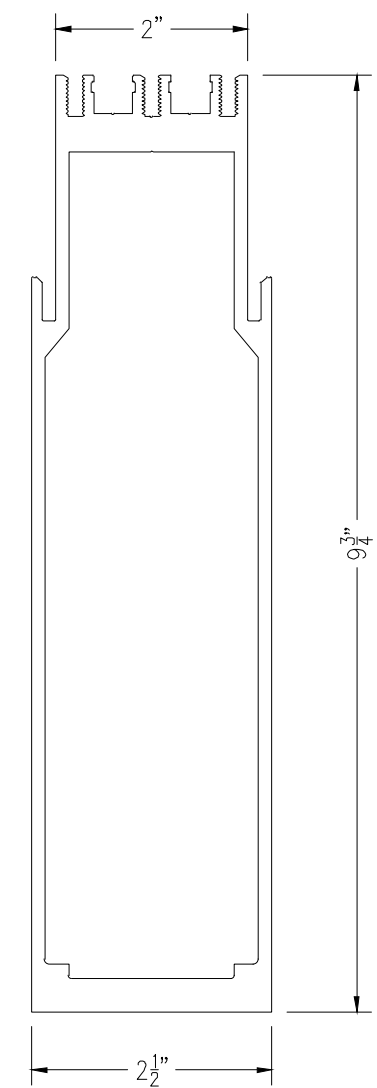
** Rafter Approval based on Final Engineering **

2 1/2" SYSTEM RAFTERS

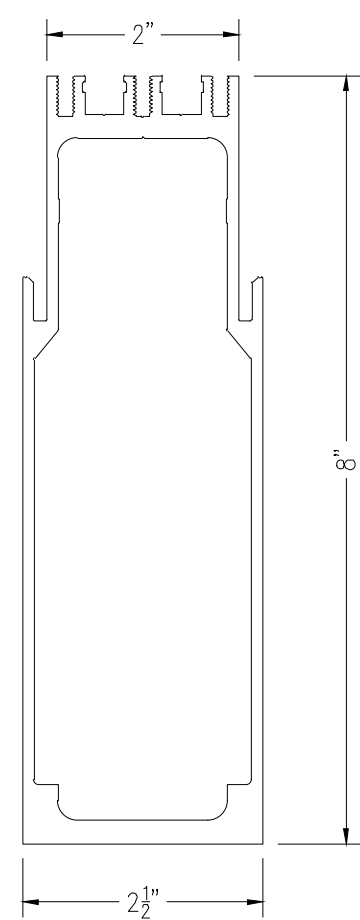
2 1/2 X 12



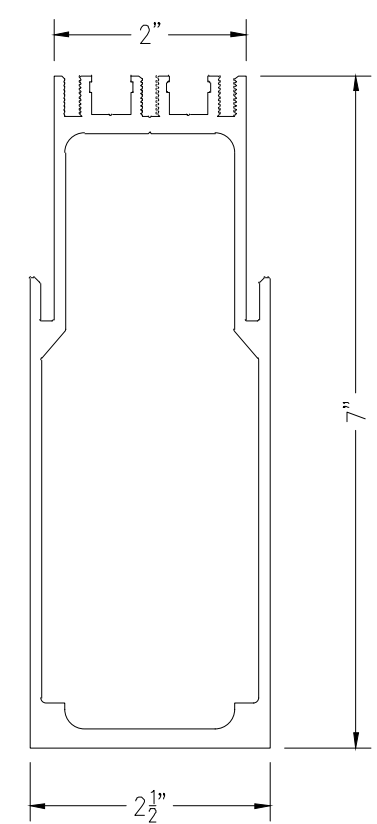
2 1/2 X 9 3/4



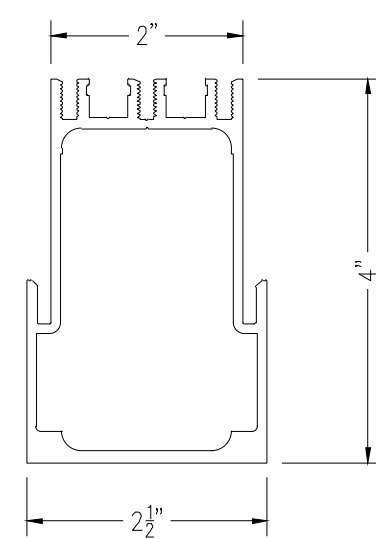
2 1/2 X 8



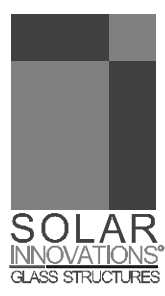
2 1/2 X 7



2 1/2 X 4



** Rafter Approval based on Final Engineering **



SI5000 Glazed Structures - Rafter Options

ALL DATA CONTAINED HEREIN IS CONSIDERED COMPANY CONFIDENTIAL INFORMATION AND IS SUBJECT TO OUR CONFIDENTIALITY AGREEMENT AS SET FORTH ON OUR WEBSITE AT <http://www.solarinnovations.com/contact/>

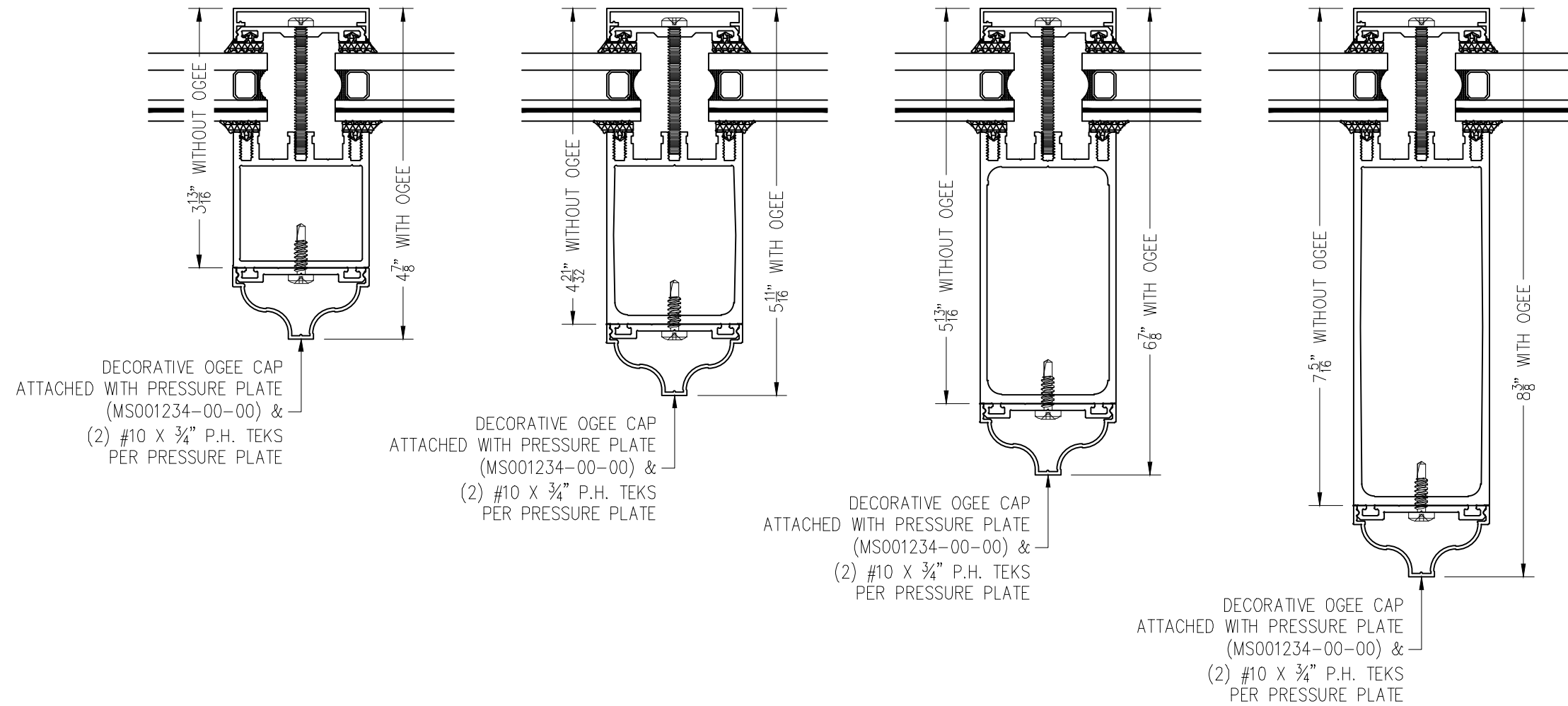
DRAWING SCALE:
6" = 1'-0"

PAGE No.:

4 OF 13

SI5000 Glazed Structures - Rafter Accessories

ALL DATA CONTAINED HEREIN IS CONSIDERED COMPANY CONFIDENTIAL INFORMATION AND IS SUBJECT TO OUR CONFIDENTIALITY AGREEMENT AS SET FORTH ON OUR WEBSITE AT <http://www.solarinnovations.com/contact/>

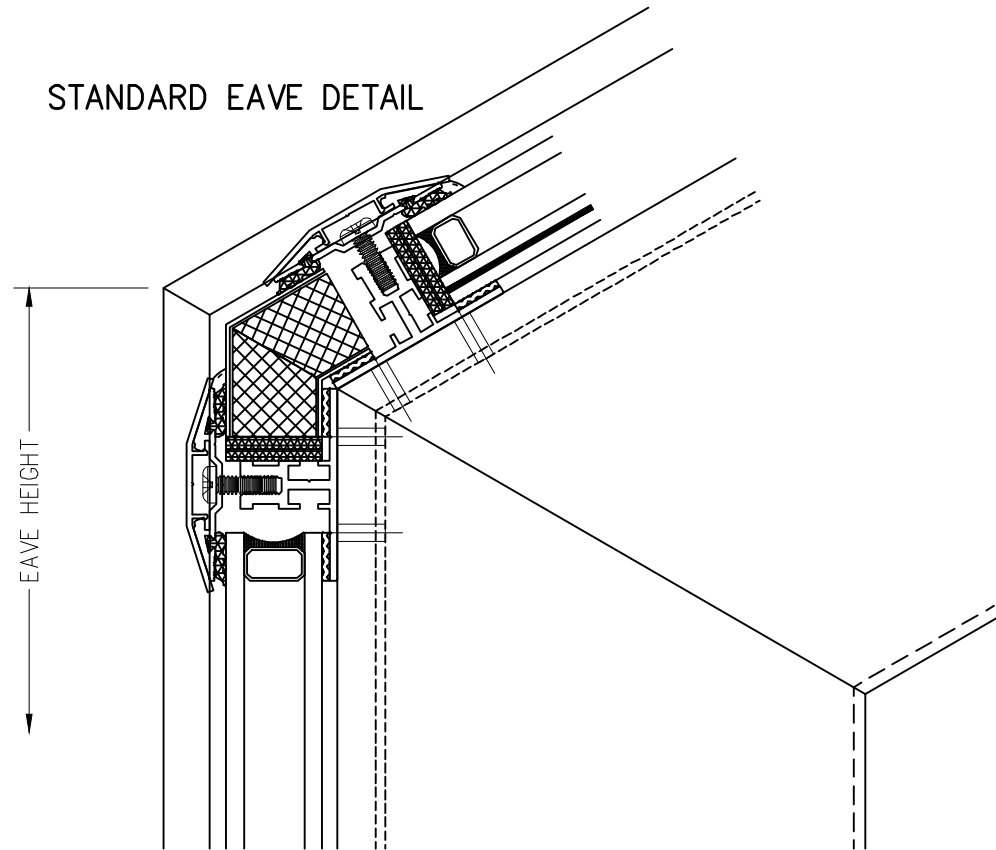


DRAWING SCALE:
6" = 1'-0"

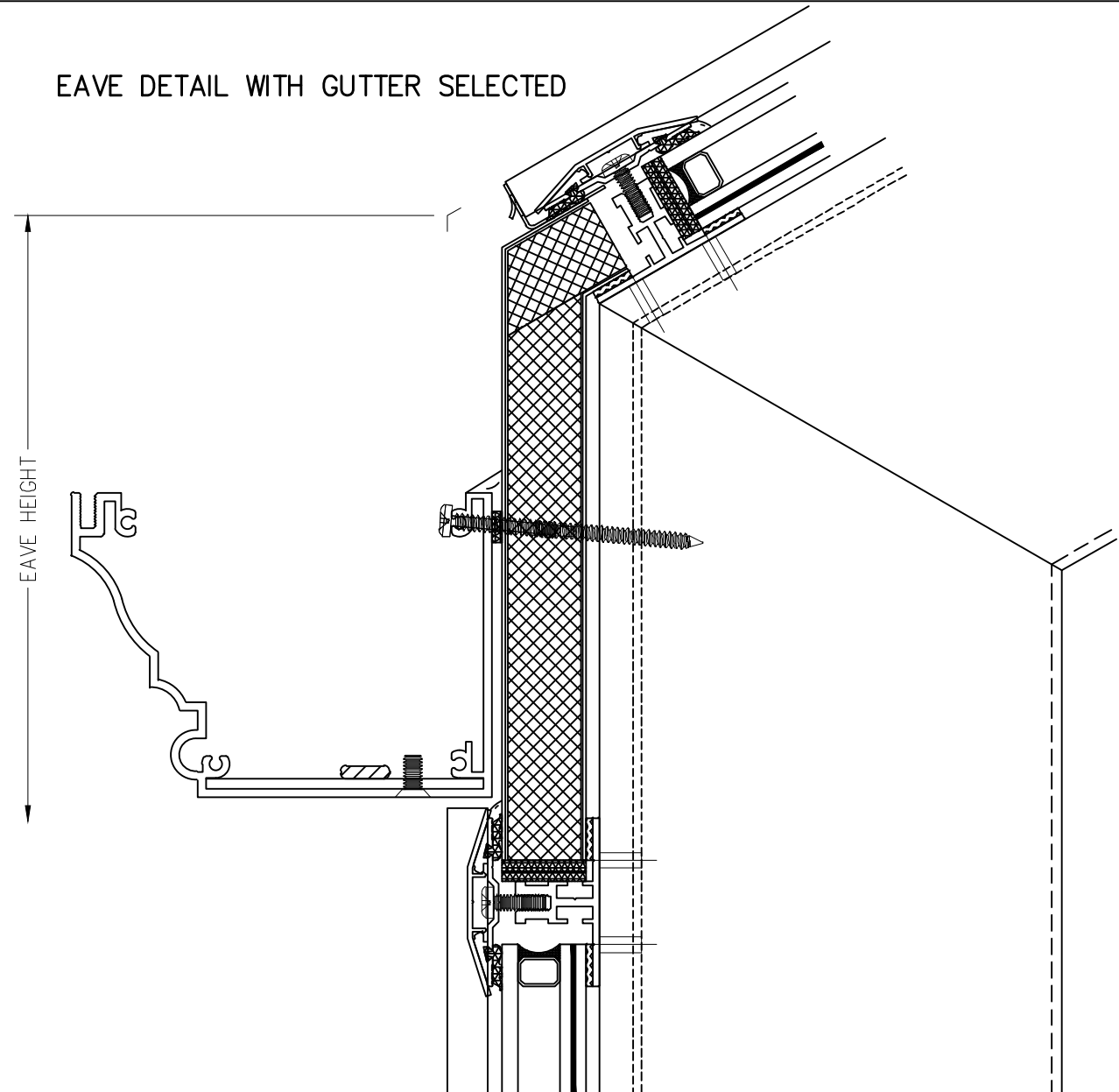
PAGE No.:

5 OF 13

STANDARD EAVE DETAIL

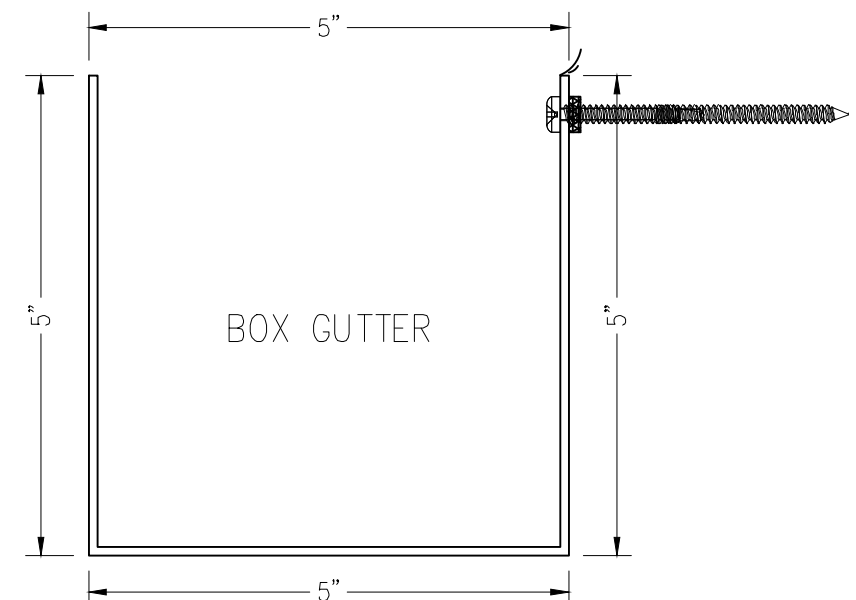
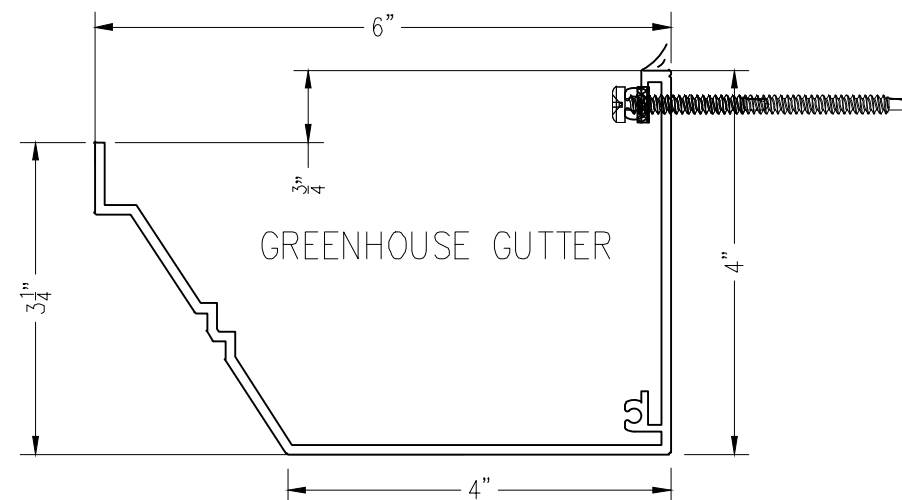
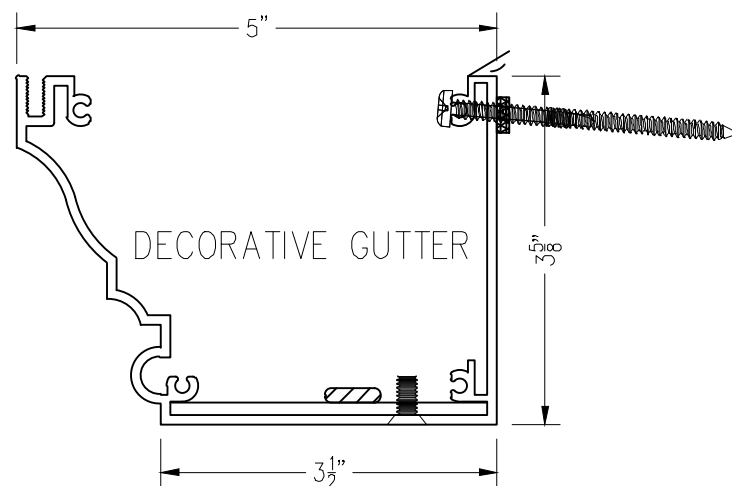


EAVE DETAIL WITH GUTTER SELECTED



****COLOR MATCHED 2 1/2" ROUND DOWNSPOUTS & ELBOWS ALSO AVAILABLE****

SI STANDARD GUTTER PROFILES



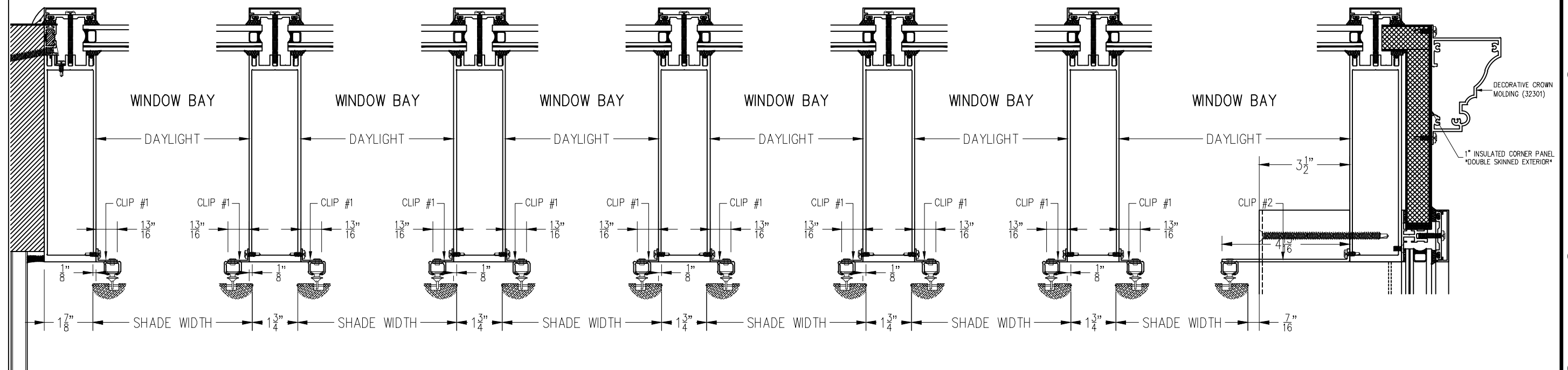
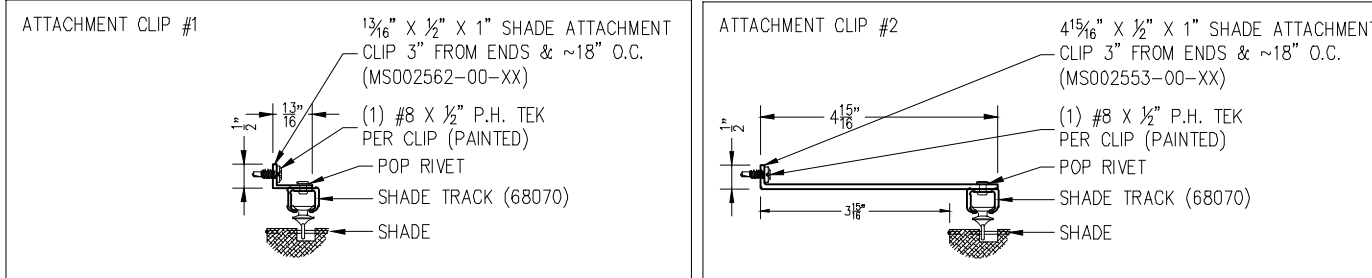
SI5000 Glazed Structures - Shade Details

ALL DATA CONTAINED HEREIN IS CONSIDERED COMPANY CONFIDENTIAL INFORMATION AND IS SUBJECT TO OUR CONFIDENTIALITY AGREEMENT AS SET FORTH ON OUR WEBSITE AT <http://www.solarinnovations.com/contact/>

DRAWING SCALE:
3" = 1'-0"

PAGE No.:

7 OF 13



SHADE
LAYOUT
STANDARD DETAIL

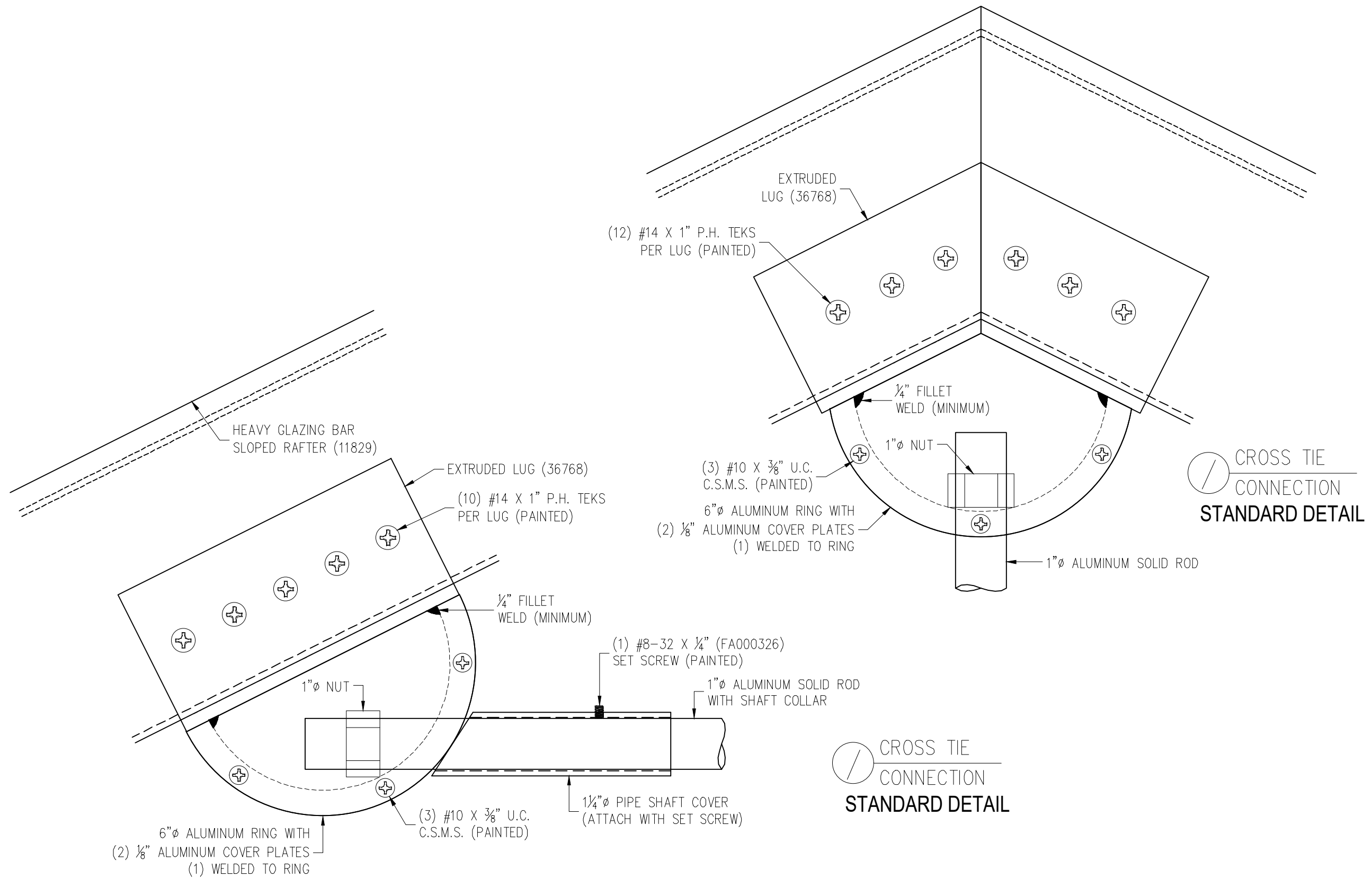
SI5000 Glazed Structures - Decorative Cross Tie

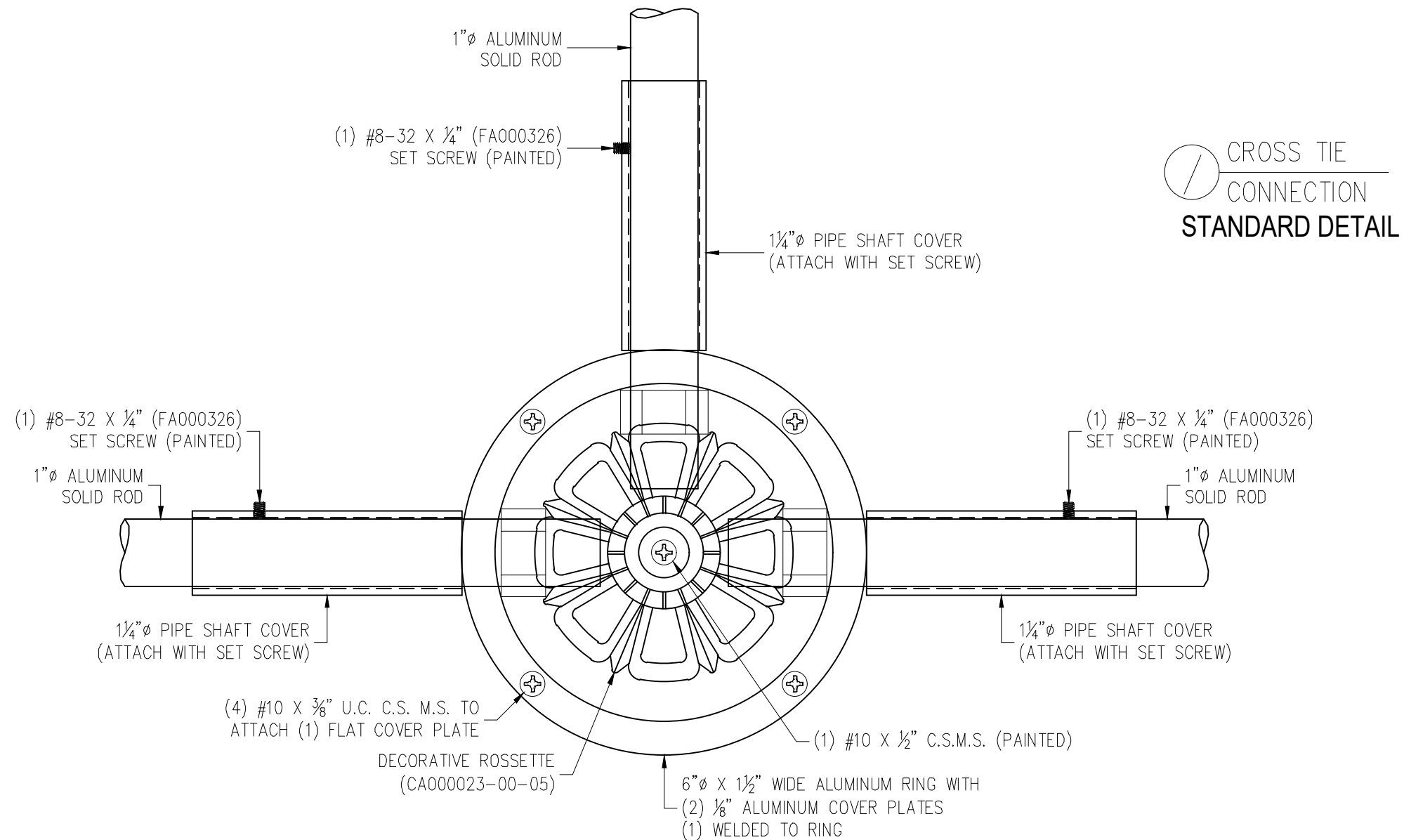
ALL DATA CONTAINED HEREIN IS CONSIDERED COMPANY CONFIDENTIAL INFORMATION AND IS SUBJECT TO OUR CONFIDENTIALITY AGREEMENT AS SET FORTH ON OUR WEBSITE AT <http://www.solarinnovations.com/contact/>

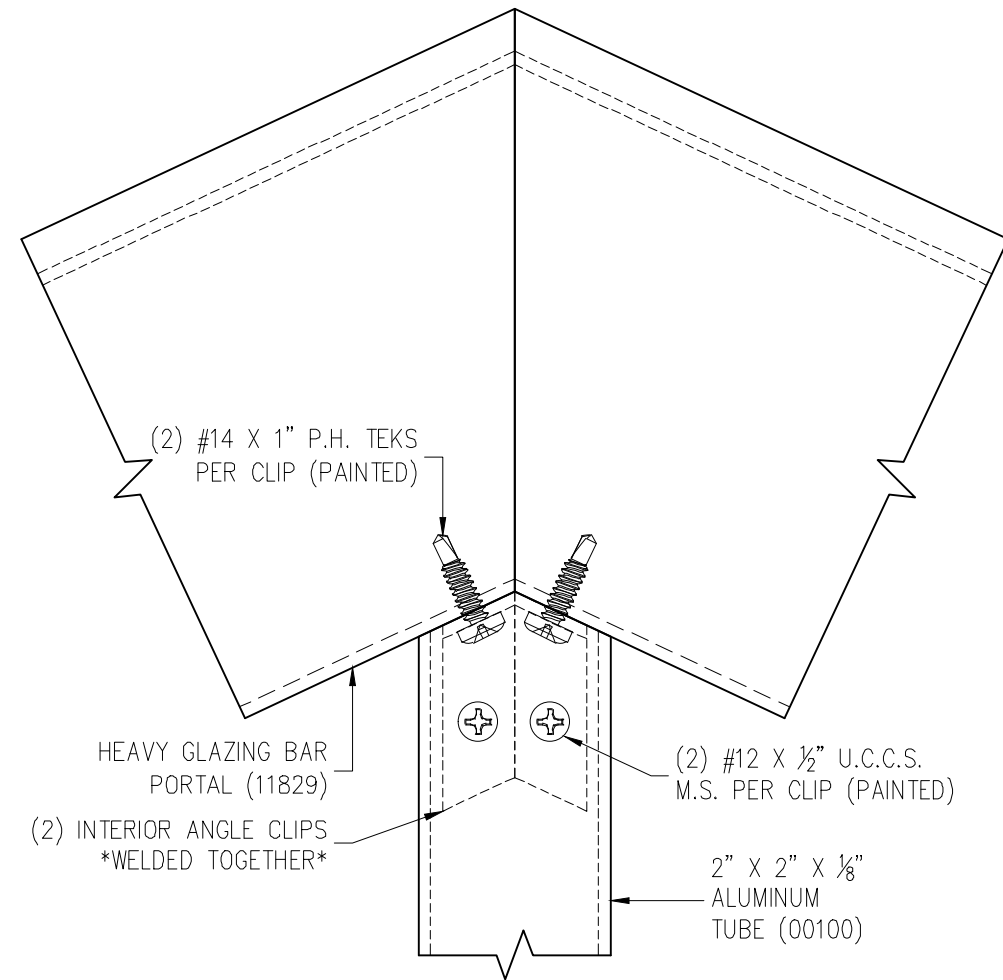
DRAWING SCALE:
6" = 1'-0"

PAGE No.:

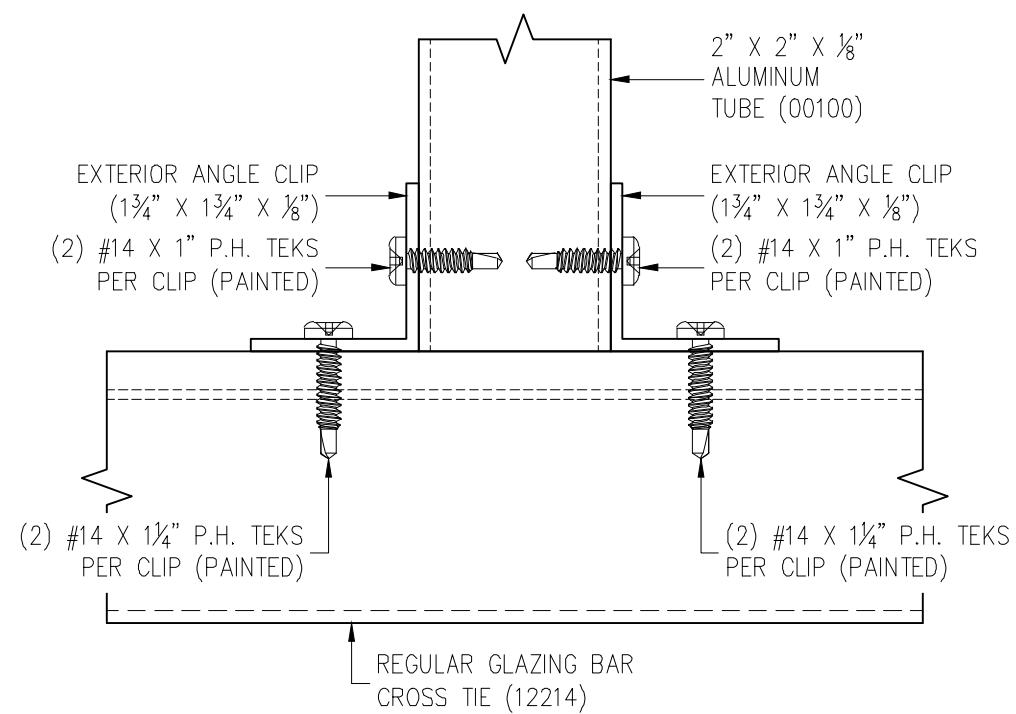
8 OF 13



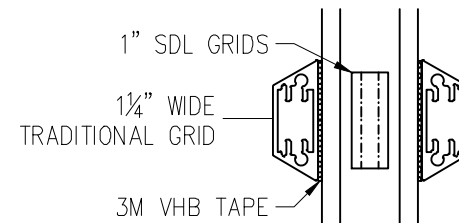
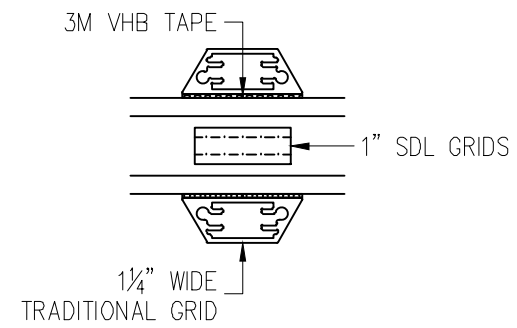
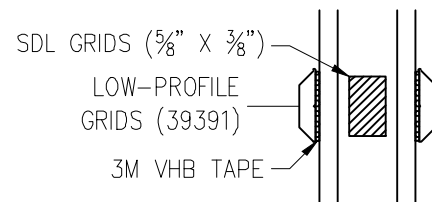
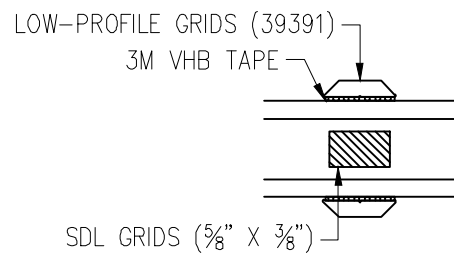
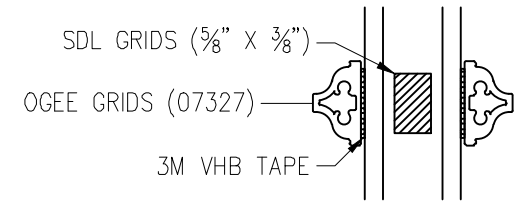
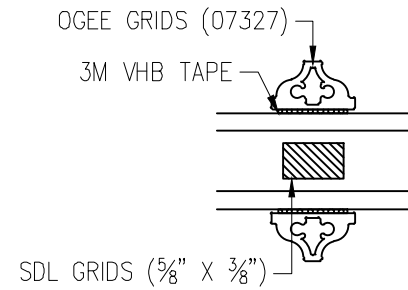
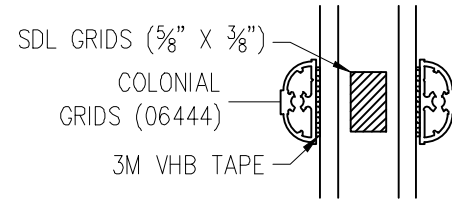
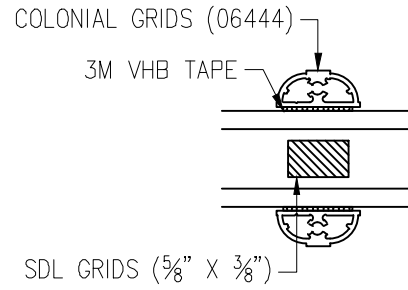
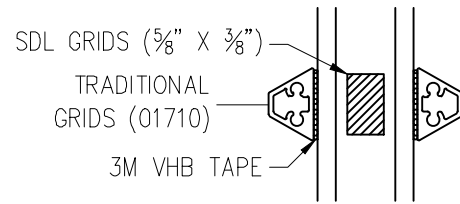
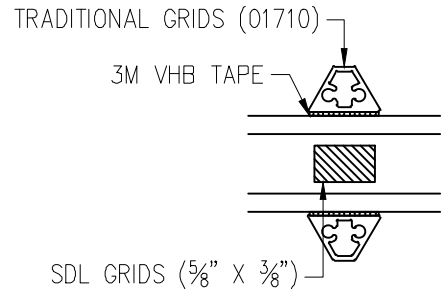




CROSS TIE
CONNECTION
STANDARD DETAIL



CROSS TIE
CONNECTION
STANDARD DETAIL



SI5000 Glazed Structures - Decorative Grid Options

ALL DATA CONTAINED HEREIN IS CONSIDERED COMPANY CONFIDENTIAL INFORMATION AND IS SUBJECT TO OUR CONFIDENTIALITY AGREEMENT AS SET FORTH ON OUR WEBSITE AT <http://www.solarinnovations.com/contact/>

DRAWING SCALE:
6" = 1'-0"

PAGE No.:

11 OF 13

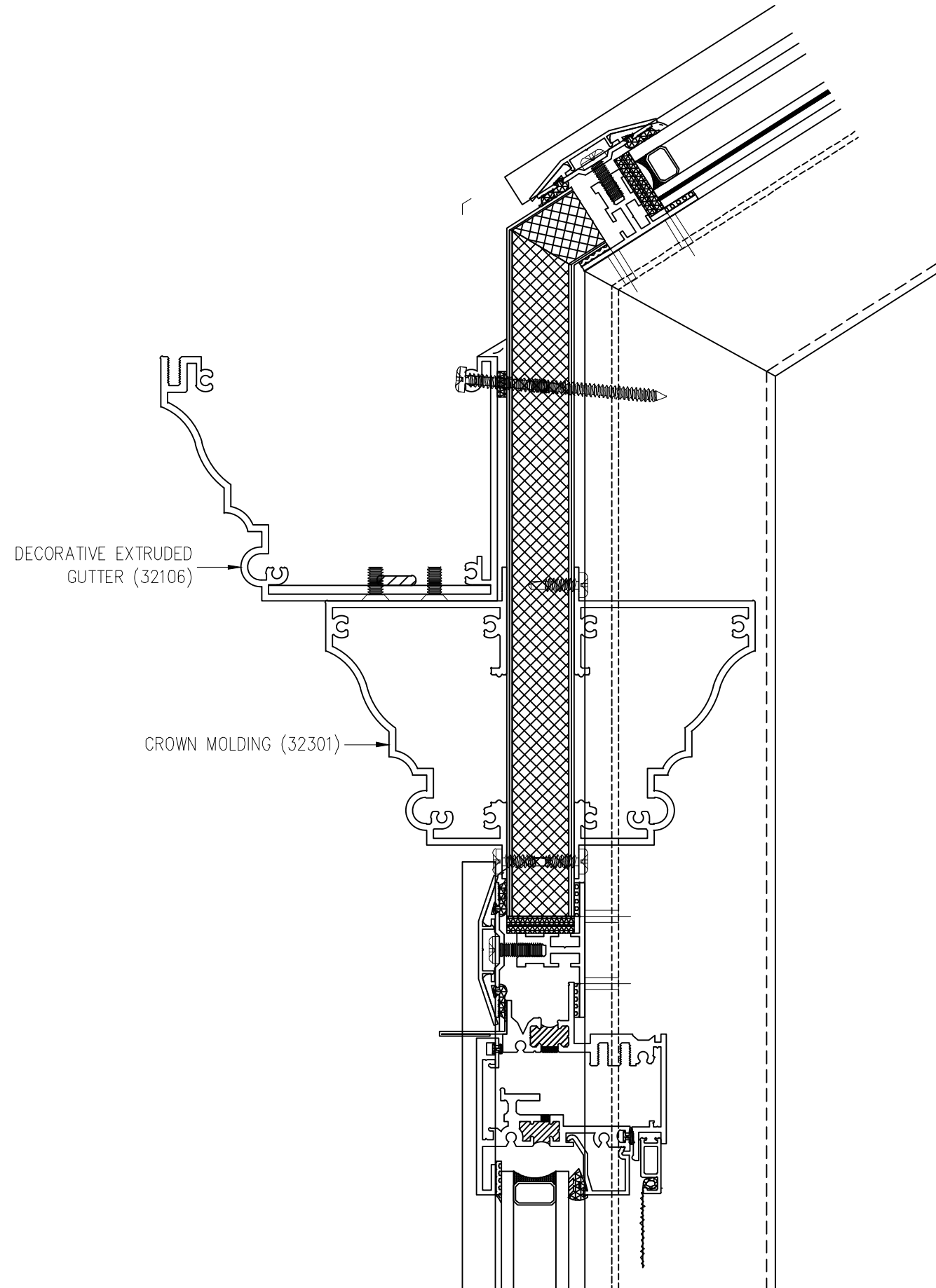
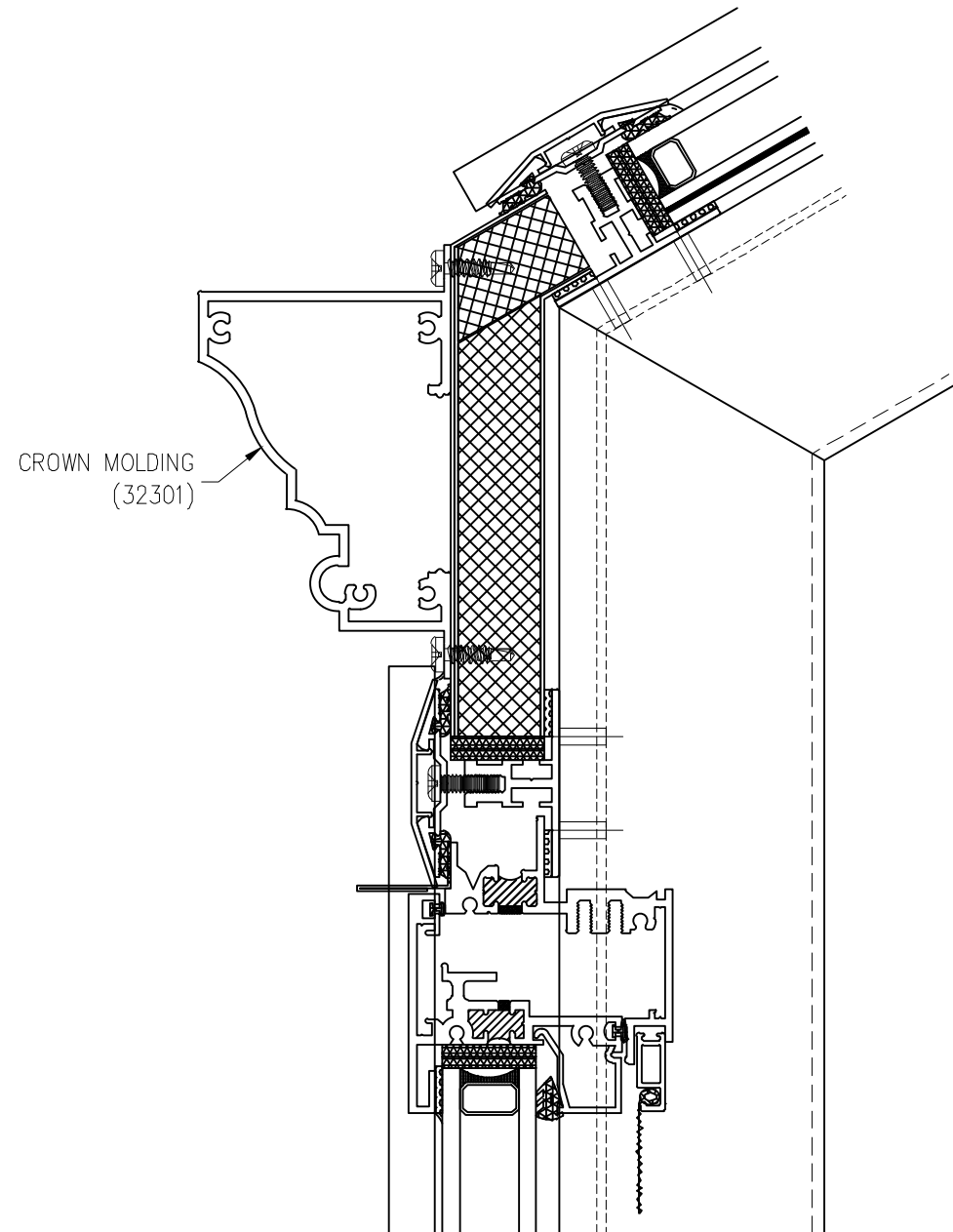
SI5000 Glazed Structures - Crown Molding

ALL DATA CONTAINED HEREIN IS CONSIDERED COMPANY CONFIDENTIAL INFORMATION AND IS SUBJECT TO OUR CONFIDENTIALITY AGREEMENT AS SET FORTH ON OUR WEBSITE AT <http://www.solarinnovations.com/contact/>

DRAWING SCALE:
6" = 1'-0"

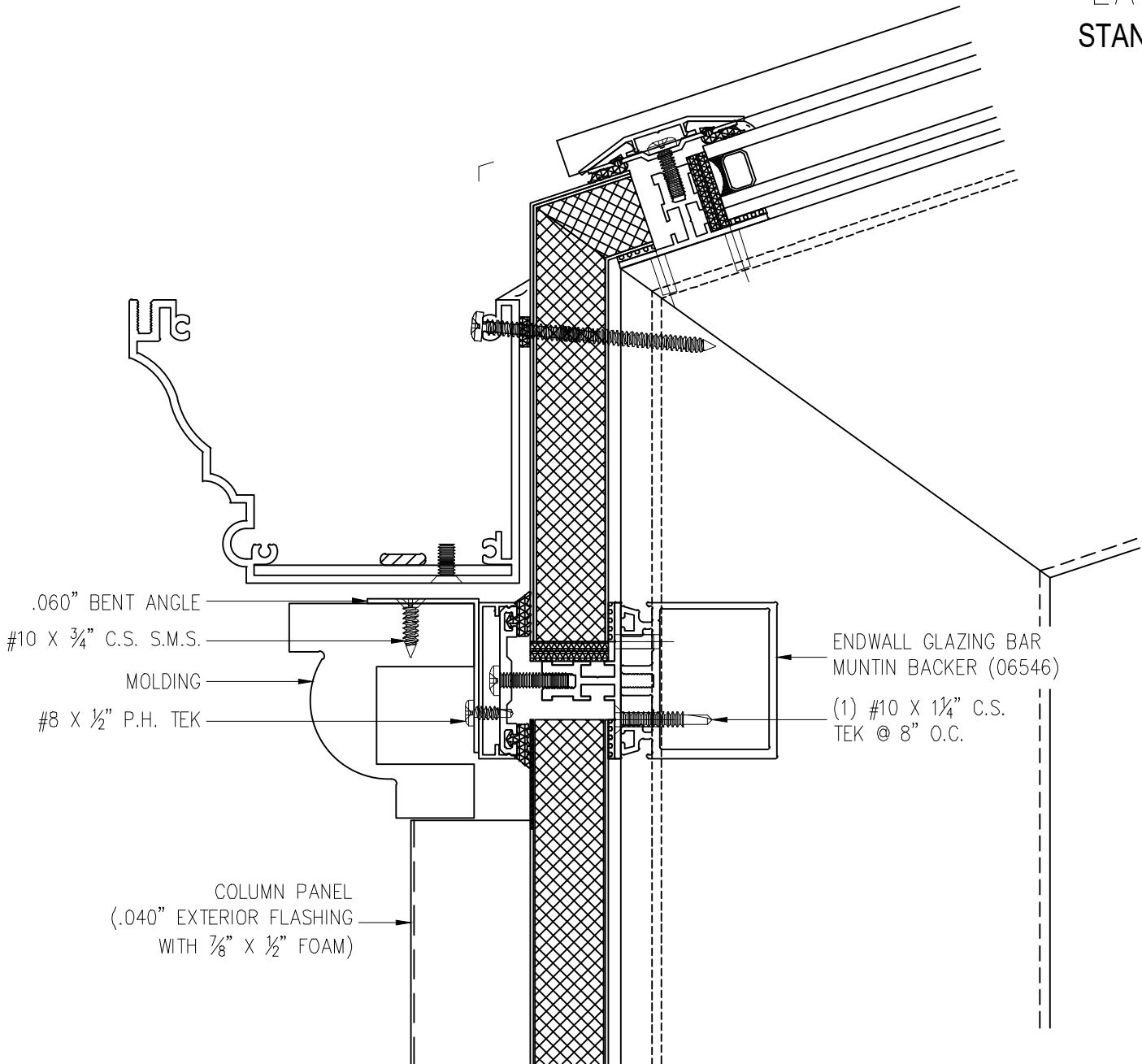
PAGE No.:

12 OF 13

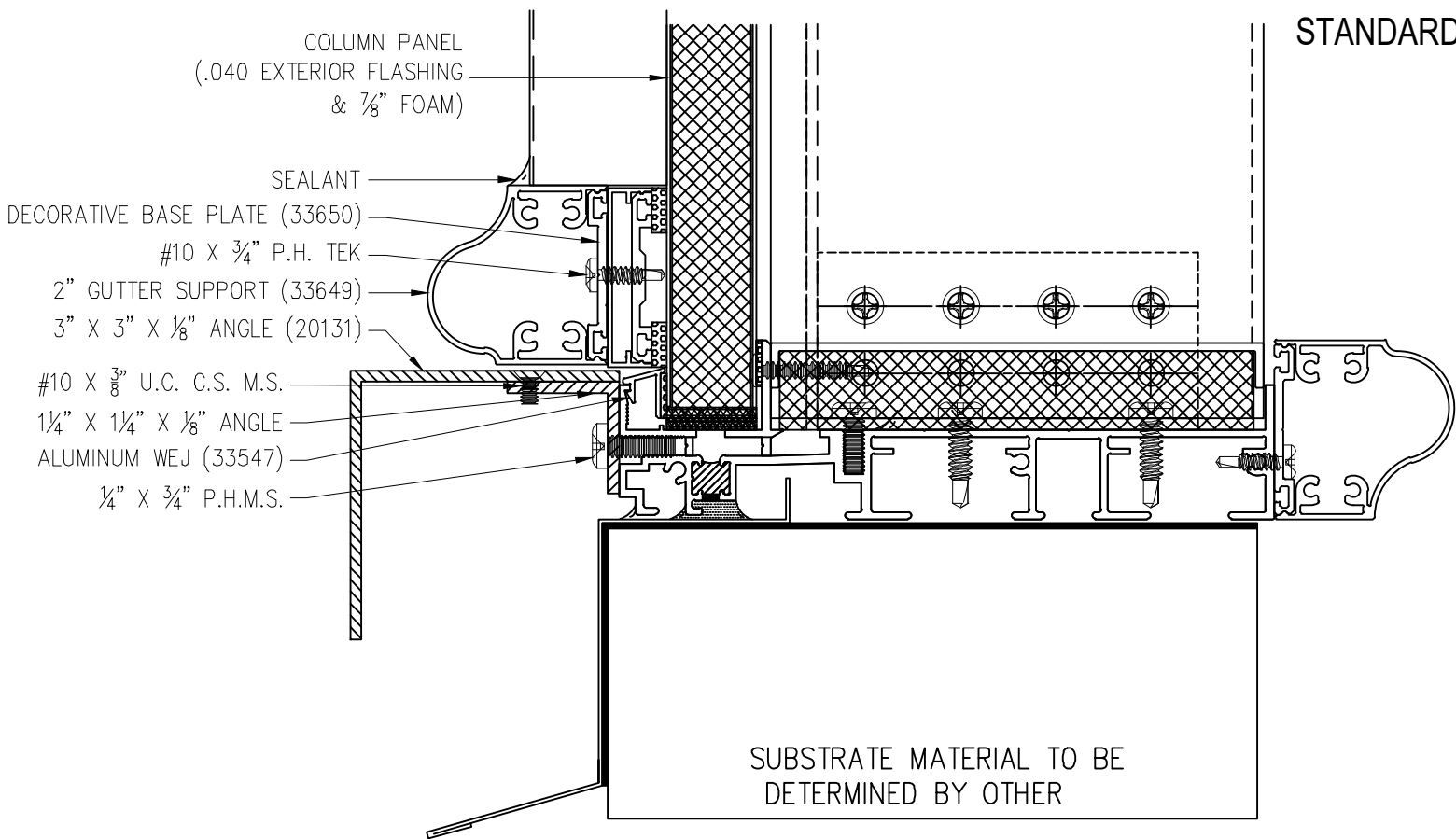


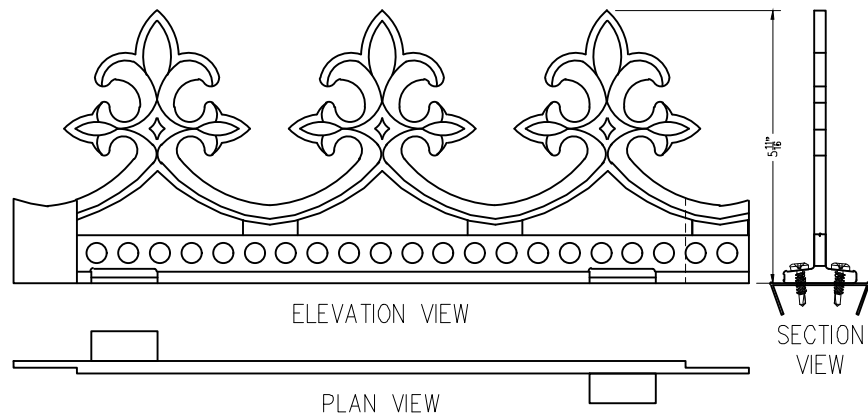
© 2021 Solar Innovations® Architectural Glazing Systems - All Rights Reserved. These plans are the property of Solar Innovations® Architectural Glazing Systems. Any use or reproduction of these plans, in whole or in part, without the written permission of Solar Innovations® Architectural Glazing Systems is forbidden.

CORNER COLUMN
EAVE SECTION
STANDARD DETAIL

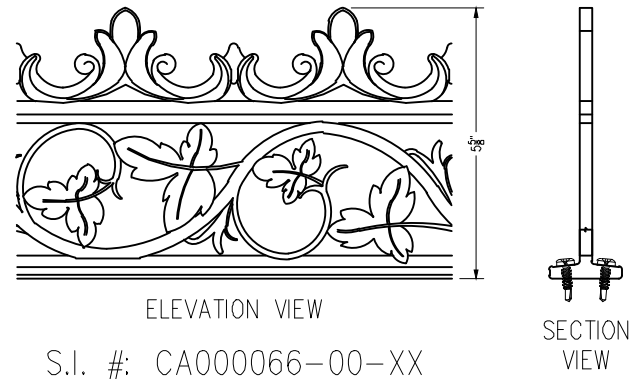


CORNER COLUMN
SILL DETAIL
STANDARD DETAIL

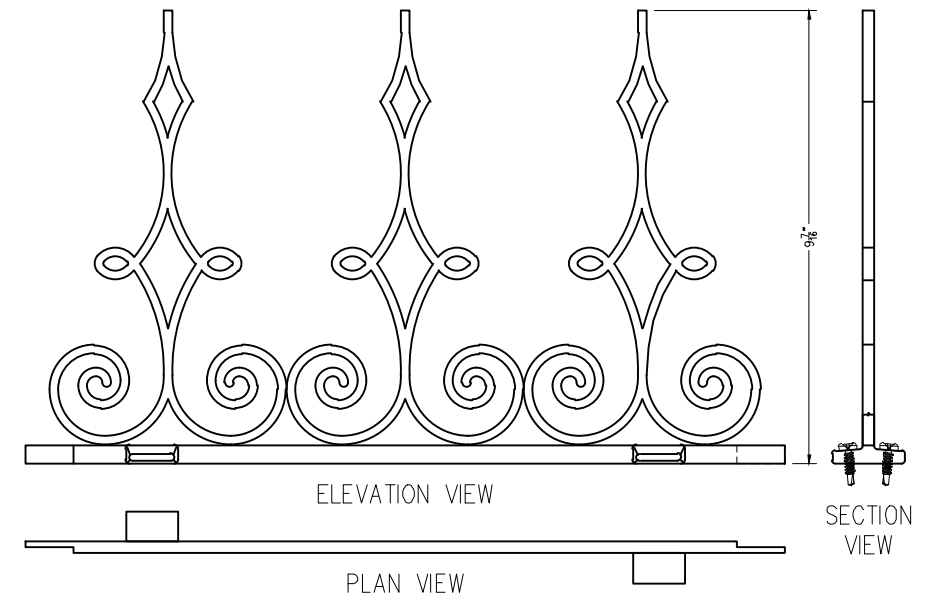




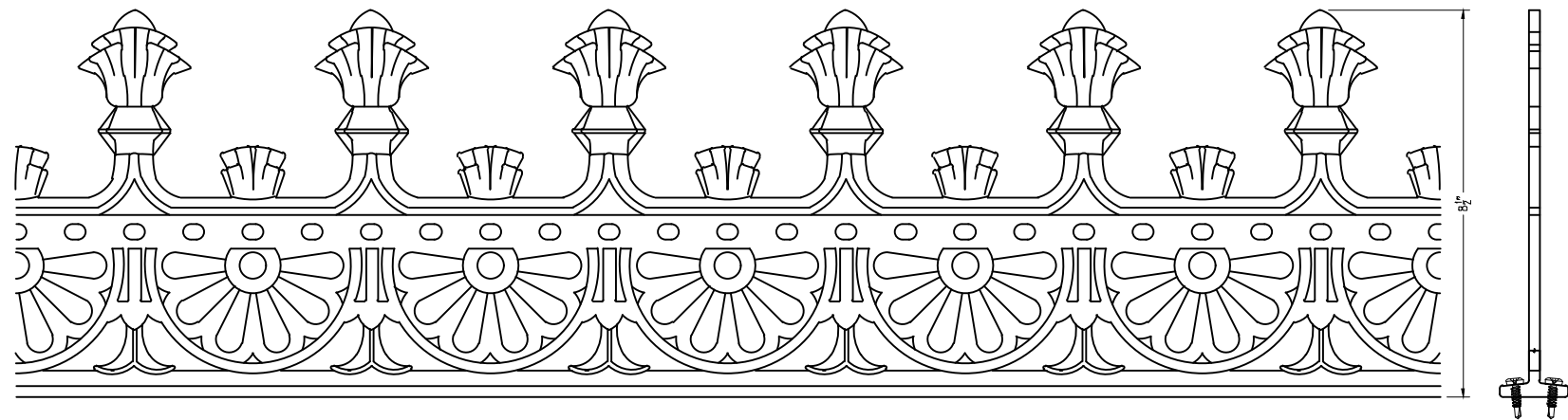
S.I. #: CA000054-00-XX



S.I. #: CA000066-00-XX

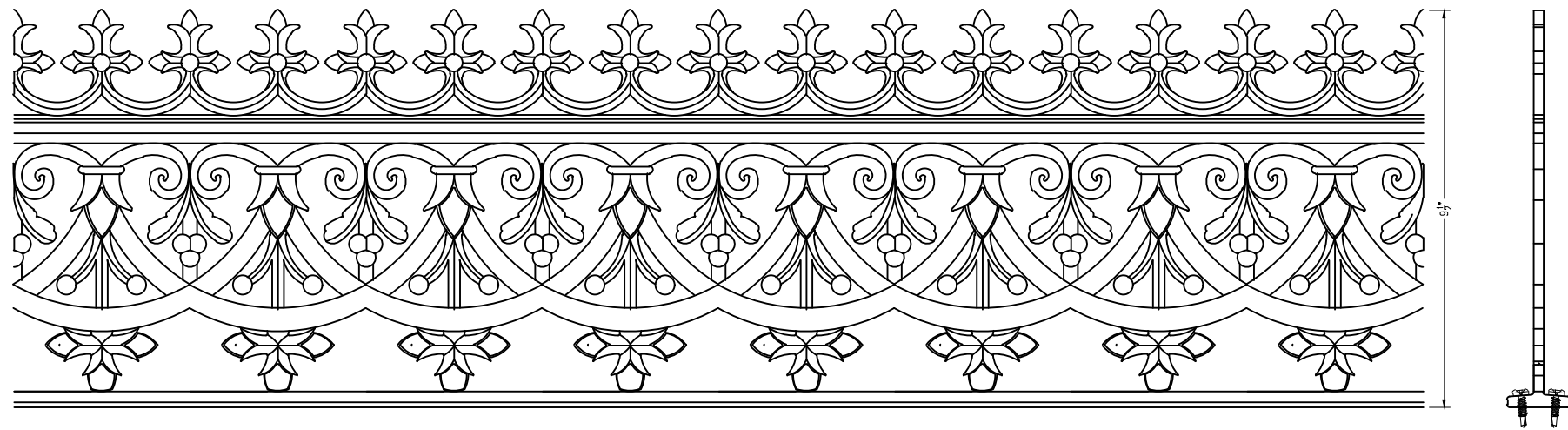


S.I. #: CA000059-00-XX



ELEVATION VIEW
S.I. #: CA000007-00-XX

SECTION VIEW



ELEVATION VIEW
S.I. #: CA000005-00-XX

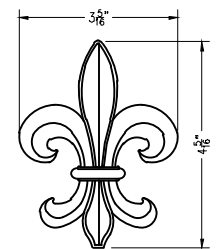
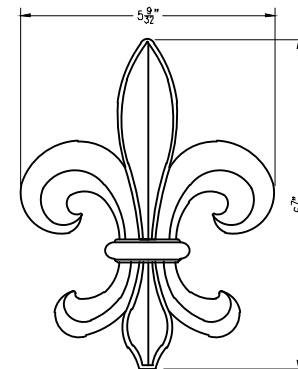
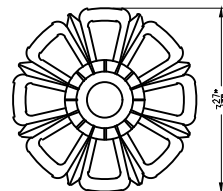
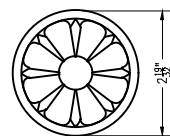
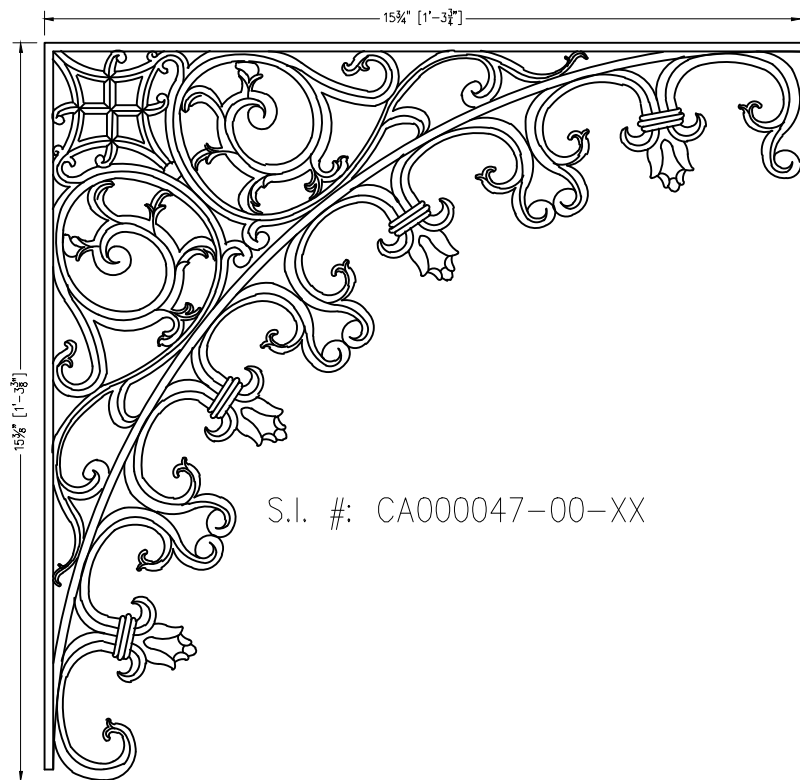
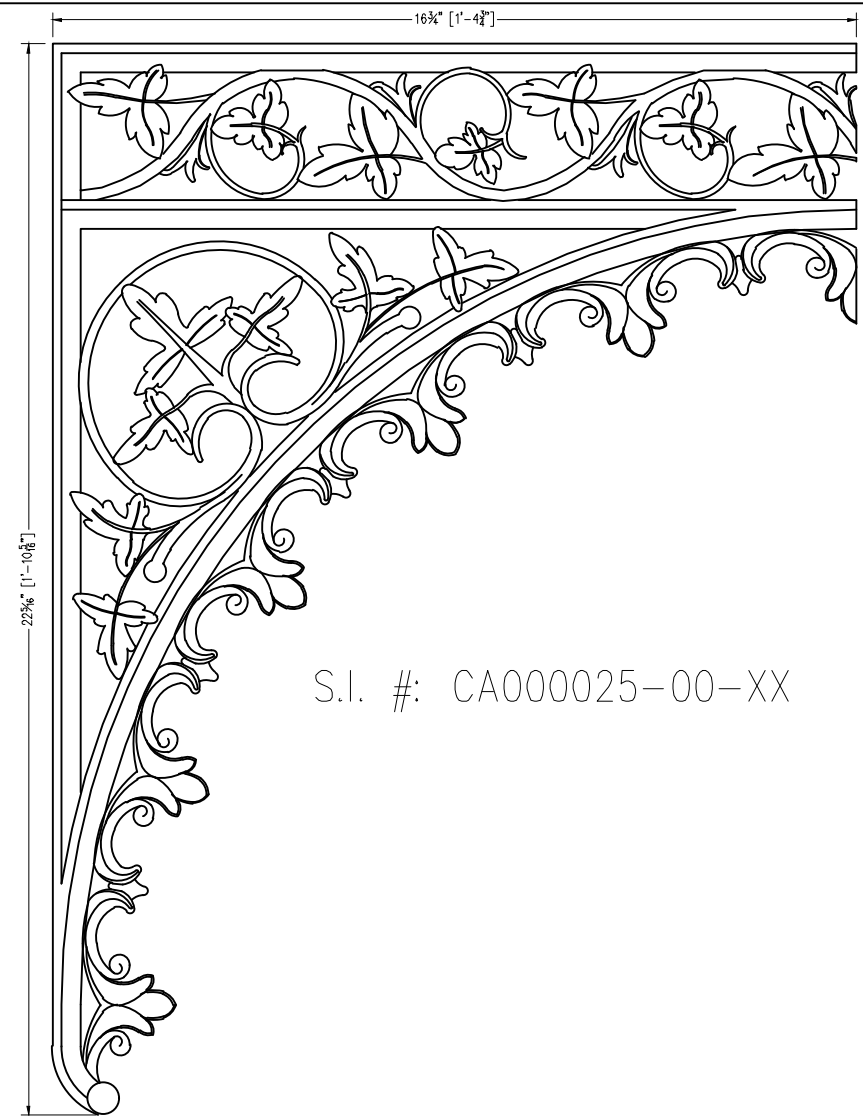
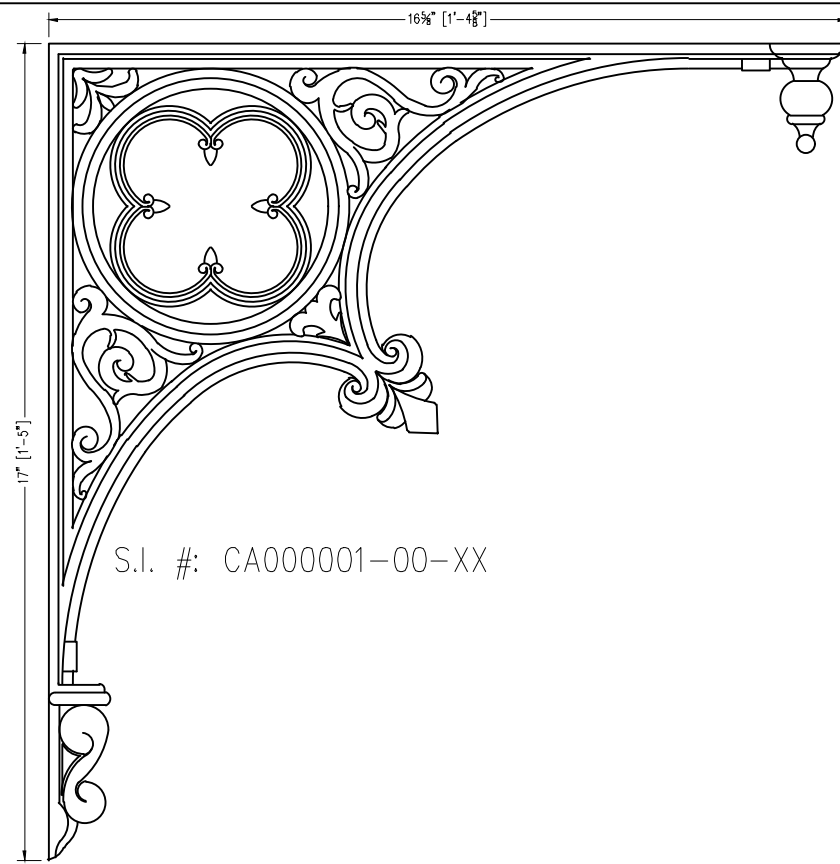
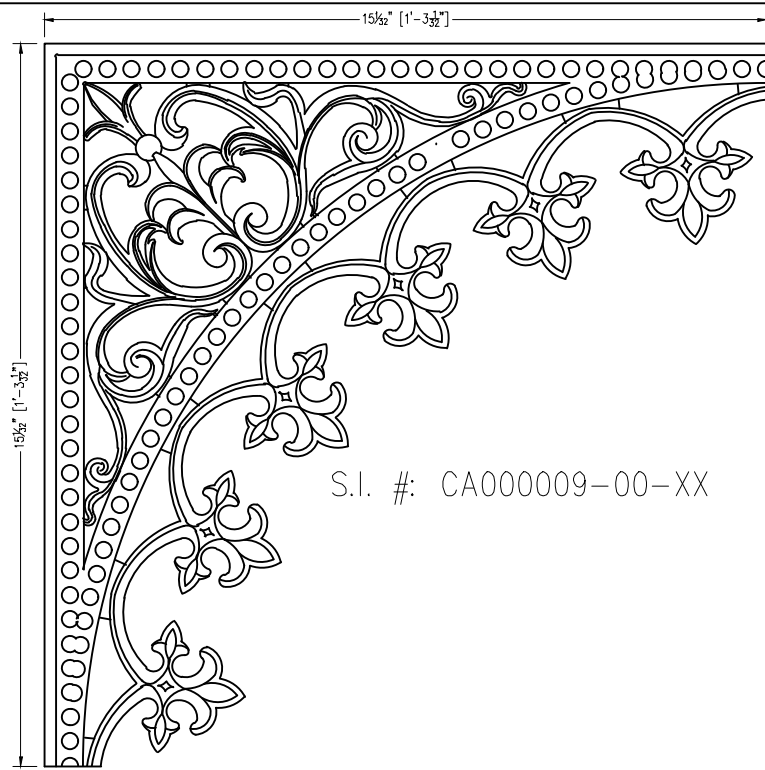
SECTION VIEW

| | | | | | | |
|--|---|--|---|---|--|-------------|
| <div><p>(X) BALL & SPIRE FINIAL ATTACHMENT DETAIL STANDARD DETAIL</p><p>15 1/2" BALL & SPIRE FINIAL (CA000062-00-XX & CA000050-00-XX)</p><p>FINIAL MOUNTING PLATE (MS001748-00-01)</p><p>66 1/2" [5'-6 1/2"] RIDGE CREST MOUNT LENGTH</p><p>63 3/4" [5'-3 3/4"] RIDGE CRESTING LENGTH</p><p>6" RIDGE CRESTING (CA000054-00-XX)</p><p>CREST MOUNT NOTCH DETAIL GOES HERE</p><p>(2) #10 X 3/4" P.H. TEKS (PAINTED)</p></div> | | <div><p>(X) CANOPY FINIAL ATTACHMENT DETAIL STANDARD DETAIL</p><p>15 1/2" BALL & SPIRE FINIAL (CA000062-00-XX & CA000050-00-XX)</p><p>(2) #12 X 1/2" U.C.C.S. M.S. PER CLIP (PAINTED)</p><p>1/8" BENT CLIP</p><p>(1) #10 X 2" C.S. TEK PER CLIP (PAINTED) *THROUGH SCREW COVER INTO BAR*</p><p>2" TUBE (00100) *WELDED TO FINIAL*</p><p>12"</p><p>26.57"</p></div> | | <div><p>S.I. #: CA000055-00-XX CASTING #: CA1005800</p></div> | <div><p>S.I. #: CA000049-00-XX CASTING #: CA0006000</p></div> | <div></div> |
| <div><p>S.I. #: CA000044-00-XX CASTING #: CA0004500</p></div> | <div><p>S.I. #: CA000042-00-XX CASTING #: CA0004100</p></div> | <div><p>S.I. #: CA000012-00-XX CASTING #: CA0004600</p></div> | <div><p>S.I. #: CA0000XX-00-XX CASTING #: CA0007300</p></div> | <div><p>S.I. #: CA0000XX-00-XX CASTING #: CA0007300</p></div> | <div>S.I5000 Glazed Structures - Finial Options</div> <div>ALL DATA CONTAINED HEREIN IS CONSIDERED COMPANY CONFIDENTIAL INFORMATION AND IS SUBJECT TO OUR CONFIDENTIALITY AGREEMENT AS SET FORTH ON OUR WEBSITE AT http://www.solarinnovations.com/contact/</div> | |
| <div><p>S.I. #: CA000015-00-XX CASTING #: CA005000</p></div> | <div><p>S.I. #: CA000078-00-XX CASTING #: CA0004900</p></div> | <div><p>S.I. #: CA000050-00-XX CASTING #: CA0006100</p></div> | <div><p>S.I. #: CA000052-00-XX CASTING #: n/a</p></div> | <div><p>S.I. #: NONE CASTING #: PHFR6X14</p></div> | | |
| <div><p>S.I. #: CA000060-00-XX CASTING #: CA1006500</p></div> | | | | | | |

DRAWING SCALE:
3" = 1'-0"

PAGE No.:
15 OF 13

© 2021 Solar Innovations® Architectural Glazing Systems — All Rights Reserved. These plans are the property of Solar Innovations® Architectural Glazing Systems. Any use or reproduction of these plans, in whole or in part, without the written permission of Solar Innovations® Architectural Glazing Systems is forbidden.



APPLIQUES

S.I. #: CA000035-00-XX

S.I. #: CA000023-00-XX

S.I. #: CA000027-00-XX

S.I. #: CA000033-00-XX