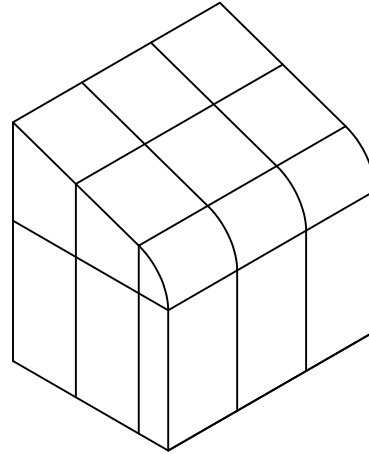
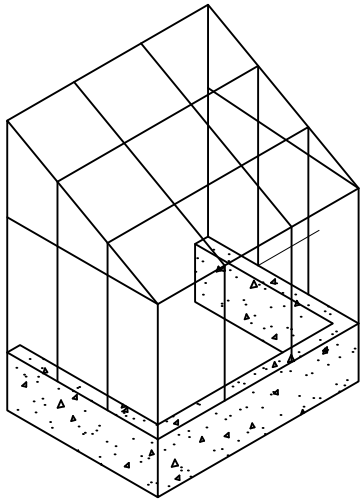


**CURVED EAVE DOUBLE PITCH**



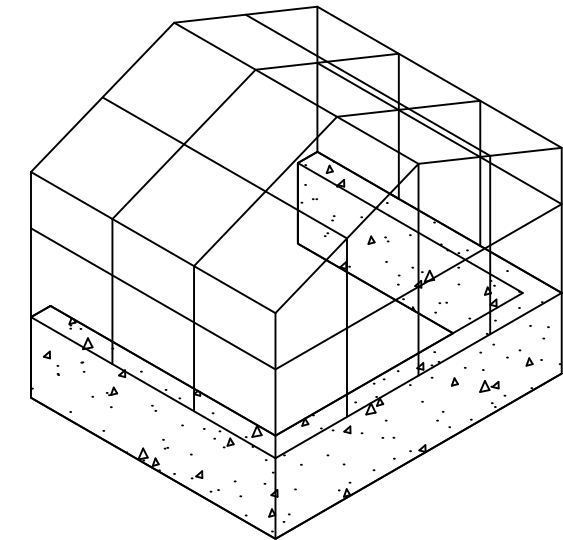
**CURVED EAVE LEAN-TO**



**STRAIGHT EAVE LEAN-TO**

**ISOMETRIC ELEVATION**

NOT TO SCALE



**STRAIGHT EAVE DOUBLE PITCH**

UNIT INFORMATION

GLAZING SET UP: Opening for  $\frac{3}{8}$ " Monolithic Glazing to 1" Insulated Glazing, Polycarbonate, or Solid Panel Infill

Decorative interior and exterior low profile grid option.

Custom Configurations Available Upon Request

Designed and Manufactured in the U.S.A.

© 2017 Solar Innovations, Inc. - All Rights Reserved. These plans are the property of Solar Innovations, Inc. Any use or reproduction of these plans, in whole or in part, without the written permission of Solar Innovations, Inc. is forbidden.



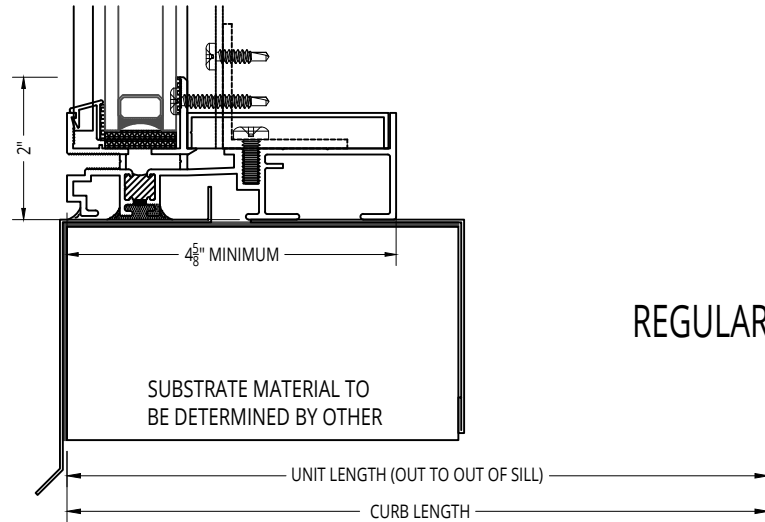
**SOLAR INNOVATIONS**  
GLASS STRUCTURES

**SI5000 Glazed Structures - Design Sample Options**

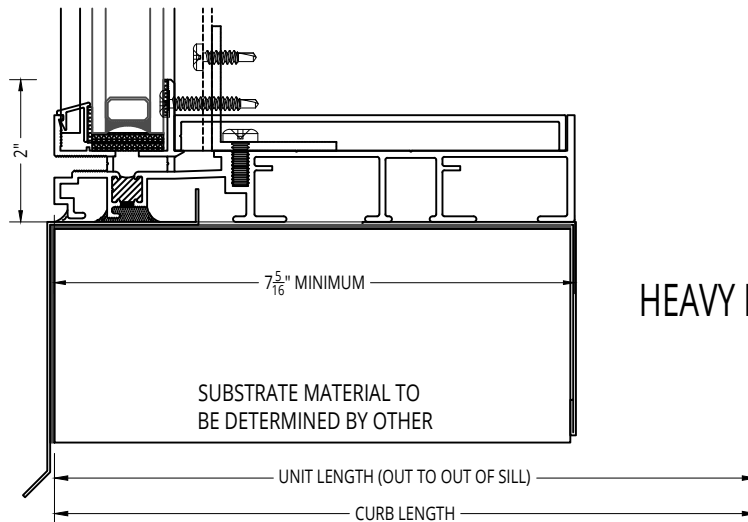
ALL DATA CONTAINED HERE IN IS CONSIDERED COMPANY CONFIDENTIAL INFORMATION AND IS SUBJECT TO OUR CONFIDENTIALITY AGREEMENT AS SET FORTH ON OUR WEBSITE AT <http://www.solarinnovations.com/contact/>

ALL DRAWINGS  
ARE VIEWED  
FROM THE  
EXTERIOR  
LOOKING IN.

DRAWING  
SCALE:  
NOT TO SCALE



REGULAR INSULATED SILL



HEAVY INSULATED SILL

© 2017 Solar Innovations, Inc. - All Rights Reserved. These plans are the property of Solar Innovations, Inc. Any use or reproduction of these plans, in whole or in part, without the written permission of Solar Innovations, Inc. is forbidden.



**SOLAR INNOVATIONS**  
GLASS STRUCTURES

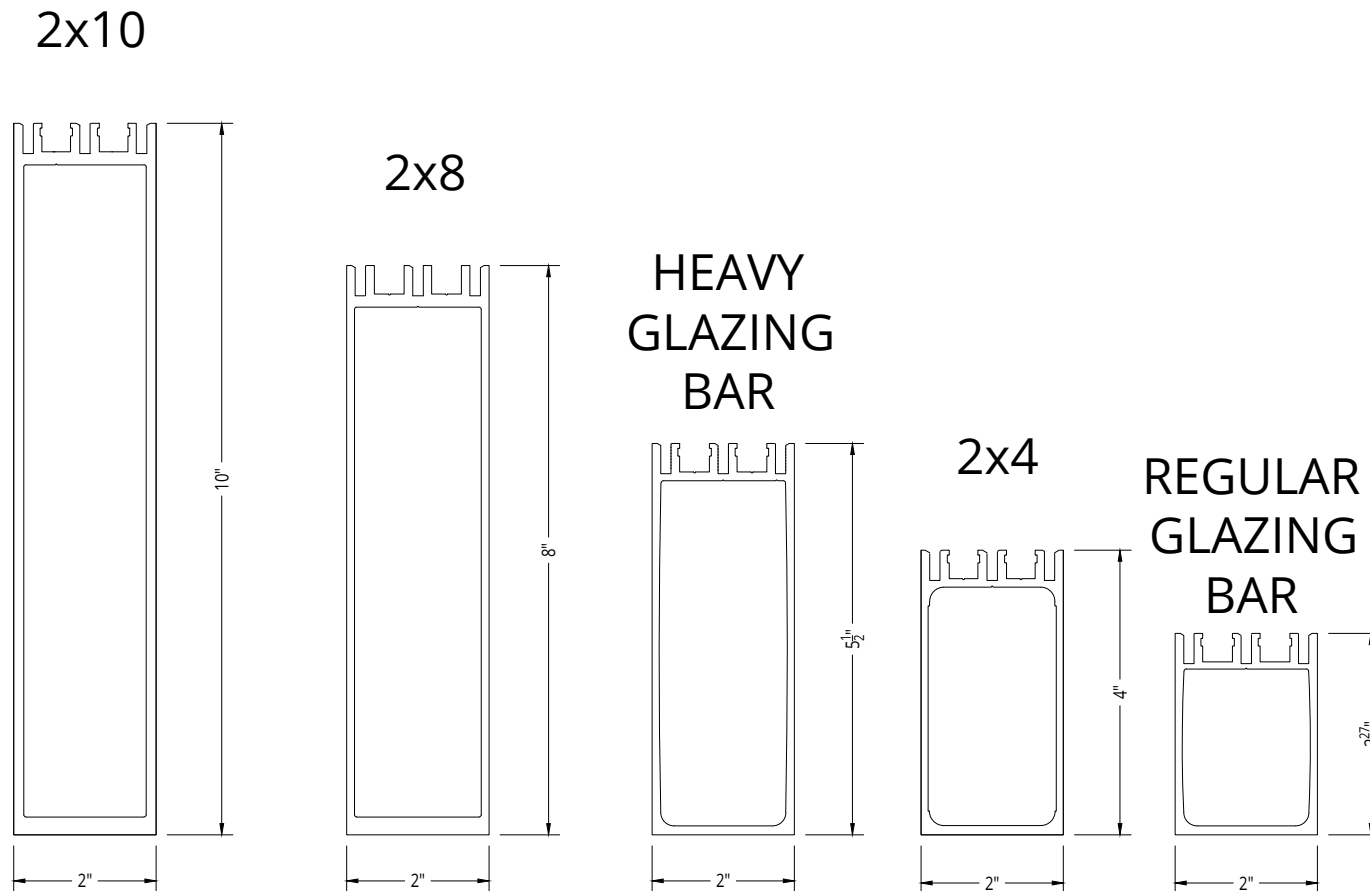
## SI5000 Glazed Structures - Sill Detail

ALL DATA CONTAINED HEREIN IS CONSIDERED COMPANY CONFIDENTIAL INFORMATION AND IS SUBJECT TO OUR CONFIDENTIALITY AGREEMENT AS SET FORTH ON OUR WEBSITE AT <http://www.solarinnovations.com/contact/>

ALL DRAWINGS  
ARE VIEWED FROM  
THE EXTERIOR  
LOOKING IN.

DRAWING  
SCALE:  
NOT TO SCALE

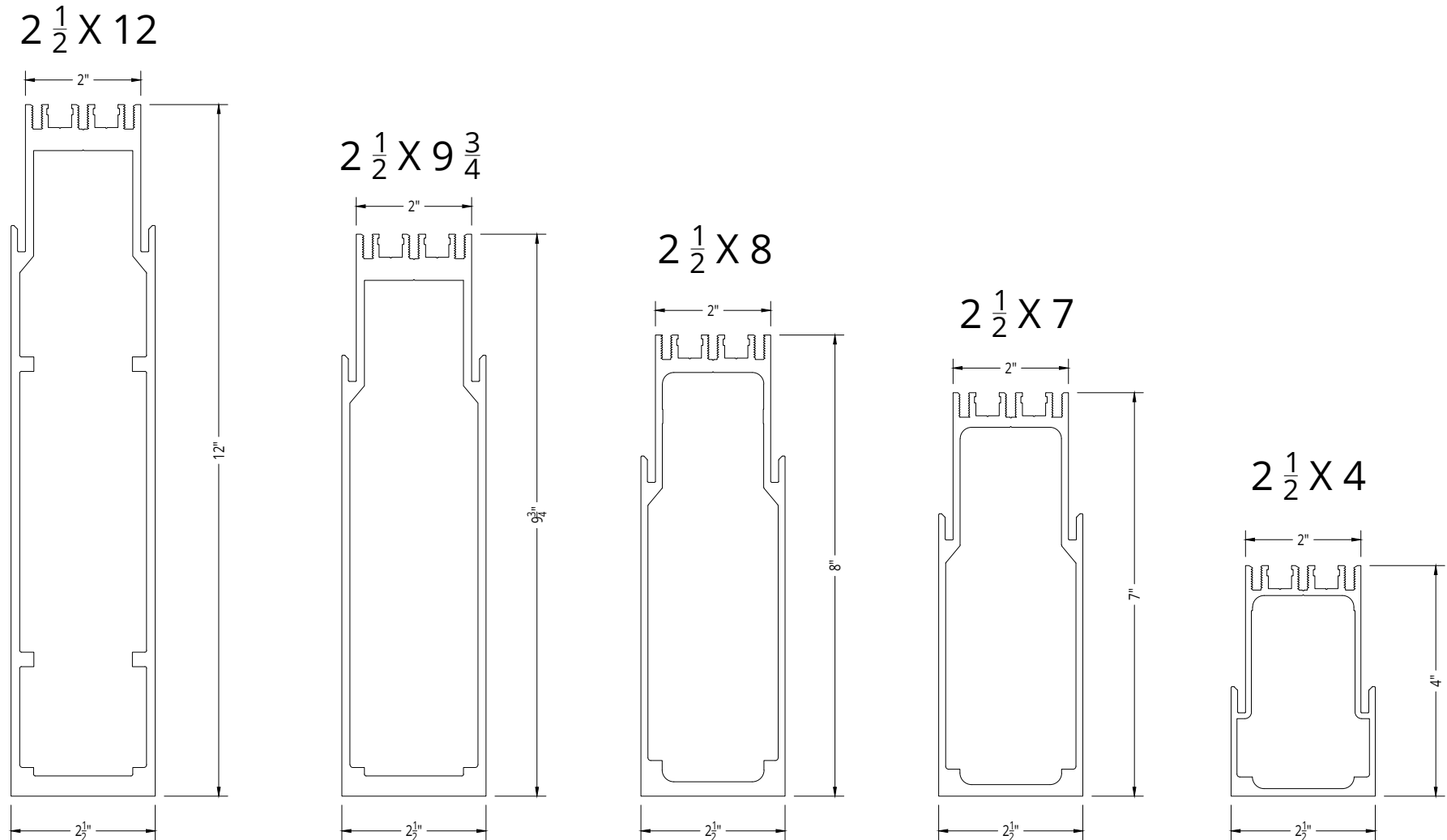
# 2" SYSTEM RAFTERS



**\*\* Rafter Approval based on Final Engineering \*\***

© 2017 Solar Innovations, Inc. - All Rights Reserved. These plans are the property of Solar Innovations, Inc. Any use or reproduction of these plans, in whole or in part, without the written permission of Solar Innovations, Inc. is forbidden.

# 2 1/2" SYSTEM RAFTERS



\*\* Rafter Approval based on Final Engineering \*\*

© 2017 Solar Innovations, Inc. - All Rights Reserved. These plans are the property of Solar Innovations, Inc. Any use or reproduction of these plans, in whole or in part, without the written permission of Solar Innovations, Inc. is forbidden.