

SOLAR INNOVATIONS® SLIDING GLASS DOORS

Project Reference Sheet
Revised 06.25.21



MASSACHUSETTS RESIDENCE

PROJECT ID
13-01-174

LOCATION

Groton, Massachusetts

SERIES

Two G2 Thermal Multi-Track Sliding Glass Doors

GLAZING

1" LoE 272 Insulated Tempered

FINISH

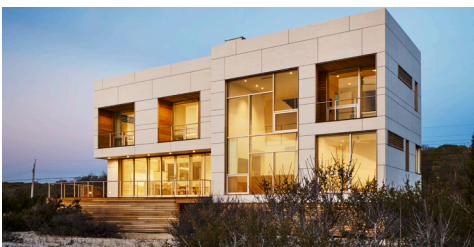
AAMA 2603 Black

GLASS SQUARE FOOTAGE

260 sq. ft

NUMBER OF PANELS

5



NEW YORK RESIDENCE

PROJECT ID
14-01-292

LOCATION

Southold, New York

SERIES

Four G2 Thermal Multi-Track Sliding Glass Doors, Swing Doors, Fixed and Awning Windows

GLAZING

1" LoE 366 Insulated Tempered

FINISH

Class I Clear Anodized

GLASS SQUARE FOOTAGE

552 sq. ft

NUMBER OF PANELS

10

SOLAR INNOVATIONS® SLIDING GLASS DOORS

Project Reference Sheet
Revised 06.25.21



VIRGINIA RESIDENCE

PROJECT ID
14-04-195

LOCATION

Great Falls, Virginia

SERIES

Six G2 Thermal Multi-Track Sliding Glass Door Systems

GLAZING

1" Clear Insulated Tempered

FINISH

Dark Bronze Anodized

GLASS SQUARE FOOTAGE

462 sq. ft

NUMBER OF PANELS

18



CALIFORNIA RESIDENCE

PROJECT ID
09-02-348

LOCATION

Livermore, California

SERIES

Two Thermal Multi-Track Sliding Glass Door Systems and Sliding Glass Windows

GLAZING

1" LoE 272 Insulated Tempered

FINISH

AAMA 2603 Black

GLASS SQUARE FOOTAGE

161 sq. ft

NUMBER OF PANELS

9

SOLAR INNOVATIONS® SLIDING GLASS DOORS

Project Reference Sheet
Revised 06.25.21



NEW YORK RESIDENCE

PROJECT ID
11-07-001

LOCATION

East Hampton, New York

SERIES

Three Multi-Track Sliding Glass Door Systems,
Inswing Terrace Doors, and Pivot Door

GLAZING

1 1/8" Crystal Gray Insulated Tempered

FINISH

Class I Clear Anodized

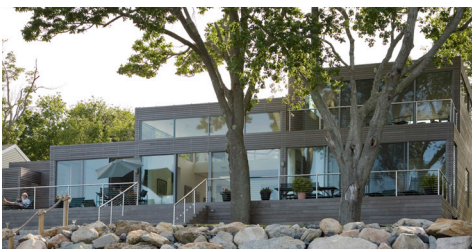


GLASS SQUARE FOOTAGE

578 sq. ft

NUMBER OF PANELS

9



MASSACHUSETTS RESIDENCE

PROJECT ID
09-11-412

LOCATION

Duxbury, Massachusetts

SERIES

Four G2 Multi-Track Sliding Glass Doors
Systems, Curtain Wall and Fixed and Awning
Windows

GLAZING

1" LoE 272 Insulated Tempered

FINISH

Custom "Cobblestone Path"

GLASS SQUARE FOOTAGE

836 sq. ft

NUMBER OF PANELS

7

SOLAR INNOVATIONS® SLIDING GLASS DOORS

Project Reference Sheet
Revised 06.25.21



NEW YORK RESIDENCE

PROJECT ID
15-11-182



LOCATION

Waccabuc, New York

SERIES

Four G3 Thermal Multi-Track Sliding Glass Door Systems

GLAZING

1 $\frac{3}{8}$ " Clear Annealed Laminated Insulated

FINISH

Class I Clear Anodized

GLASS SQUARE FOOTAGE

388 sq. ft

NUMBER OF PANELS

12



NEW JERSEY RESIDENCE

PROJECT ID
13-06-153

LOCATION

Montclair, New Jersey

SERIES

Two G3 Multi-Track Sliding Glass Door Systems with Grids, Curtain Wall, Terrace Door, and Windows

GLAZING

1 $\frac{3}{8}$ " Clear Insulated Tempered

FINISH

Dark Bronze Anodized

GLASS SQUARE FOOTAGE

656 sq. ft

NUMBER OF PANELS

15

SOLAR INNOVATIONS® SLIDING GLASS DOORS

Project Reference Sheet
Revised 06.25.21



GEORGIA RESIDENCE

PROJECT ID
08-06-200

LOCATION

Atlanta, Georgia

SERIES

G2 Nonthermal Dual Track Sliding Glass Door System

GLAZING

1" LoE 366 Insulated Tempered

FINISH

Class I Clear Anodized

GLASS SQUARE FOOTAGE

120 sq. ft

NUMBER OF PANELS

4



NEW YORK RESIDENCE

PROJECT ID
14-06-446

LOCATION

Amenia, New York

SERIES

Six G2 Thermal Multi-Track Sliding Glass Door Systems, 90° Structurally Glazed Corner Curtain Wall and Swing Doors

GLAZING

1" LoE 272 Insulated Tempered

FINISH

Dark Bronze Anodized

GLASS SQUARE FOOTAGE

1,637 sq. ft

NUMBER OF PANELS

33