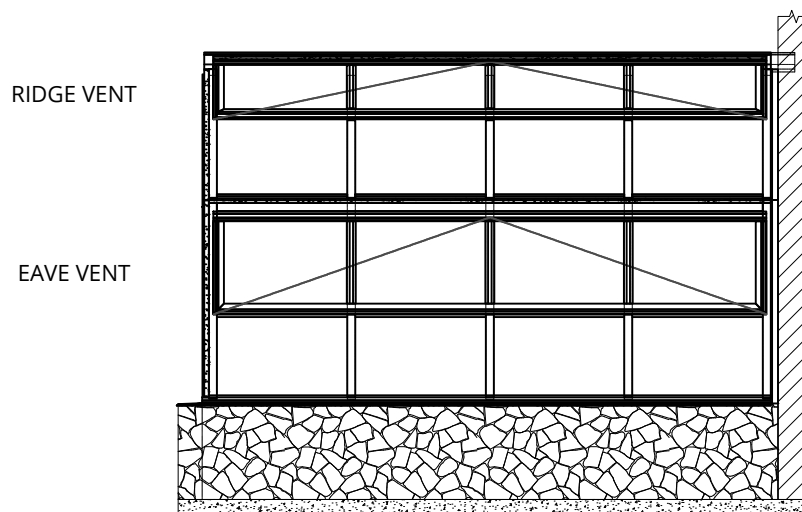


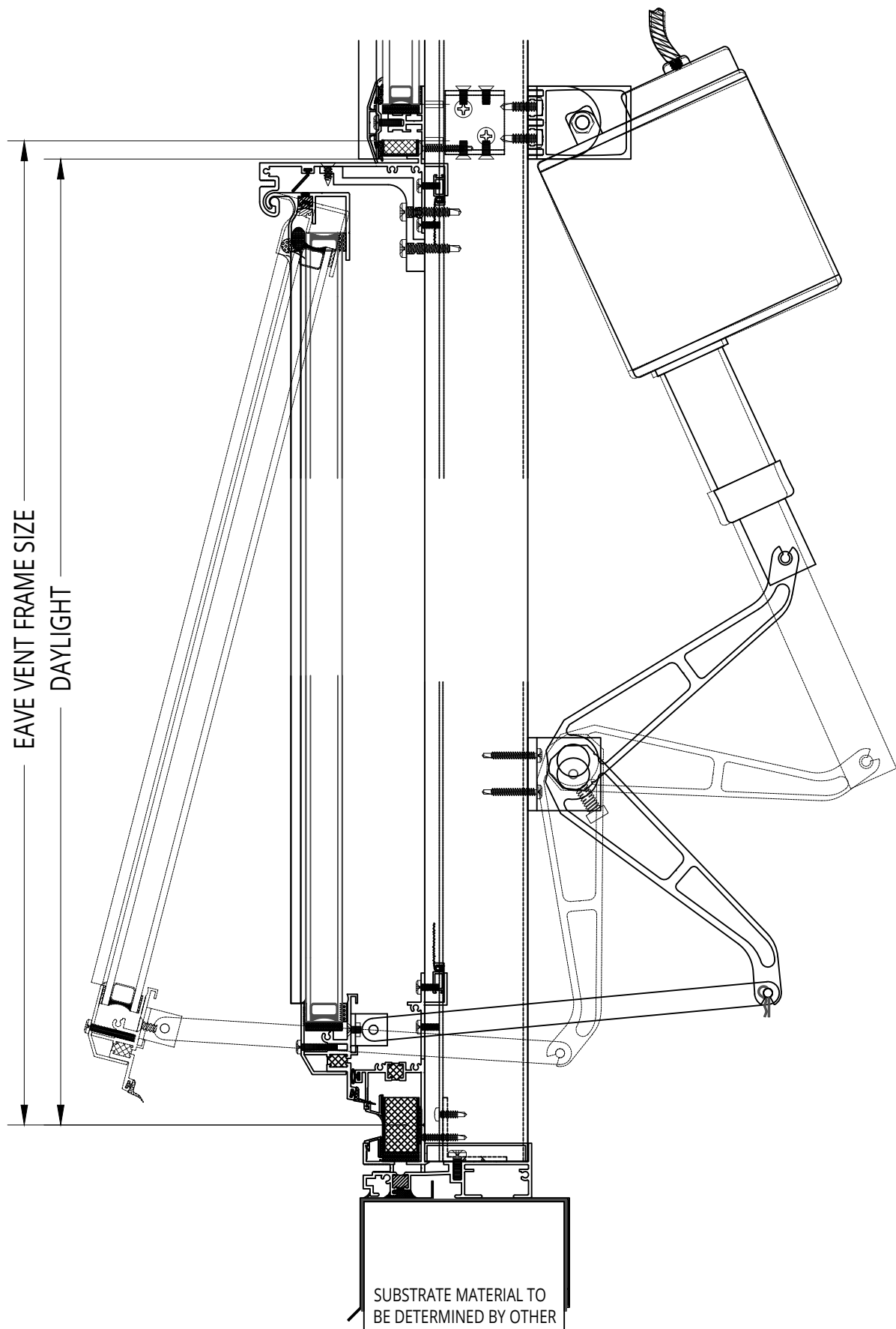
UNIT INFORMATION
GLAZING SET UP: Opening for $\frac{3}{8}$ " Monolithic Glazing to 1" Insulated Glazing, Polycarbonate, or Solid Panel Infill
Decorative interior and exterior low profile grid option.
Custom Configurations Available Upon Request
Designed and Manufactured in the U.S.A.



ISOMETRIC ELEVATION

NOT TO SCALE

© 2017 Solar Innovations, Inc. - All Rights Reserved. These plans are the property of Solar Innovations, Inc. Any use or reproduction of these plans, in whole or in part, without the written permission of Solar Innovations, Inc. is forbidden.



© 2017 Solar Innovations, Inc. - All Rights Reserved. These plans are the property of Solar Innovations, Inc. Any use or reproduction of these plans, in whole or in part, without the written permission of Solar Innovations, Inc. is forbidden.



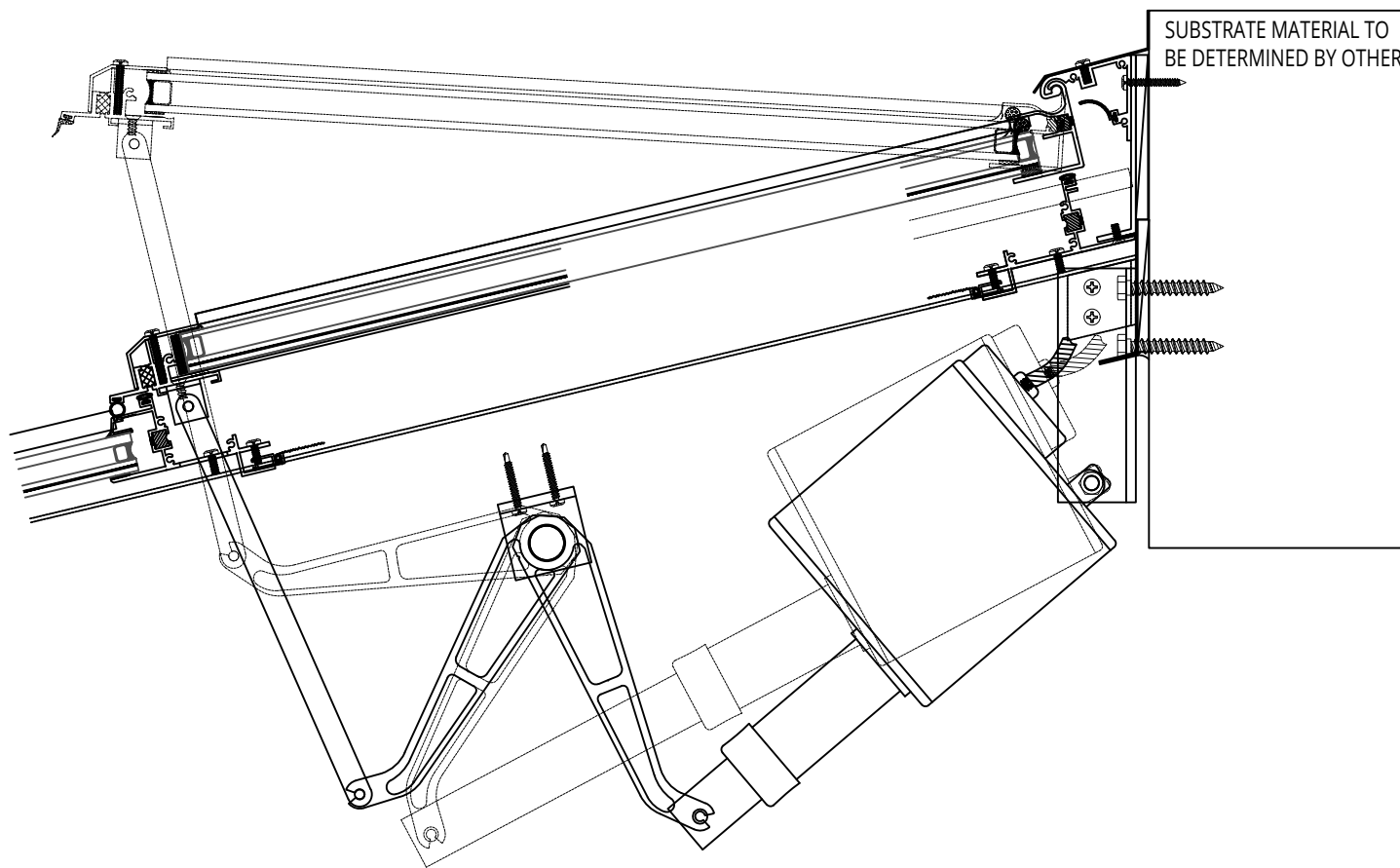
**SOLAR INNOVATIONS**  
ARCHITECTURAL GLAZING SYSTEMS

## SI6300 Eave Vent - Head and Sill Detail

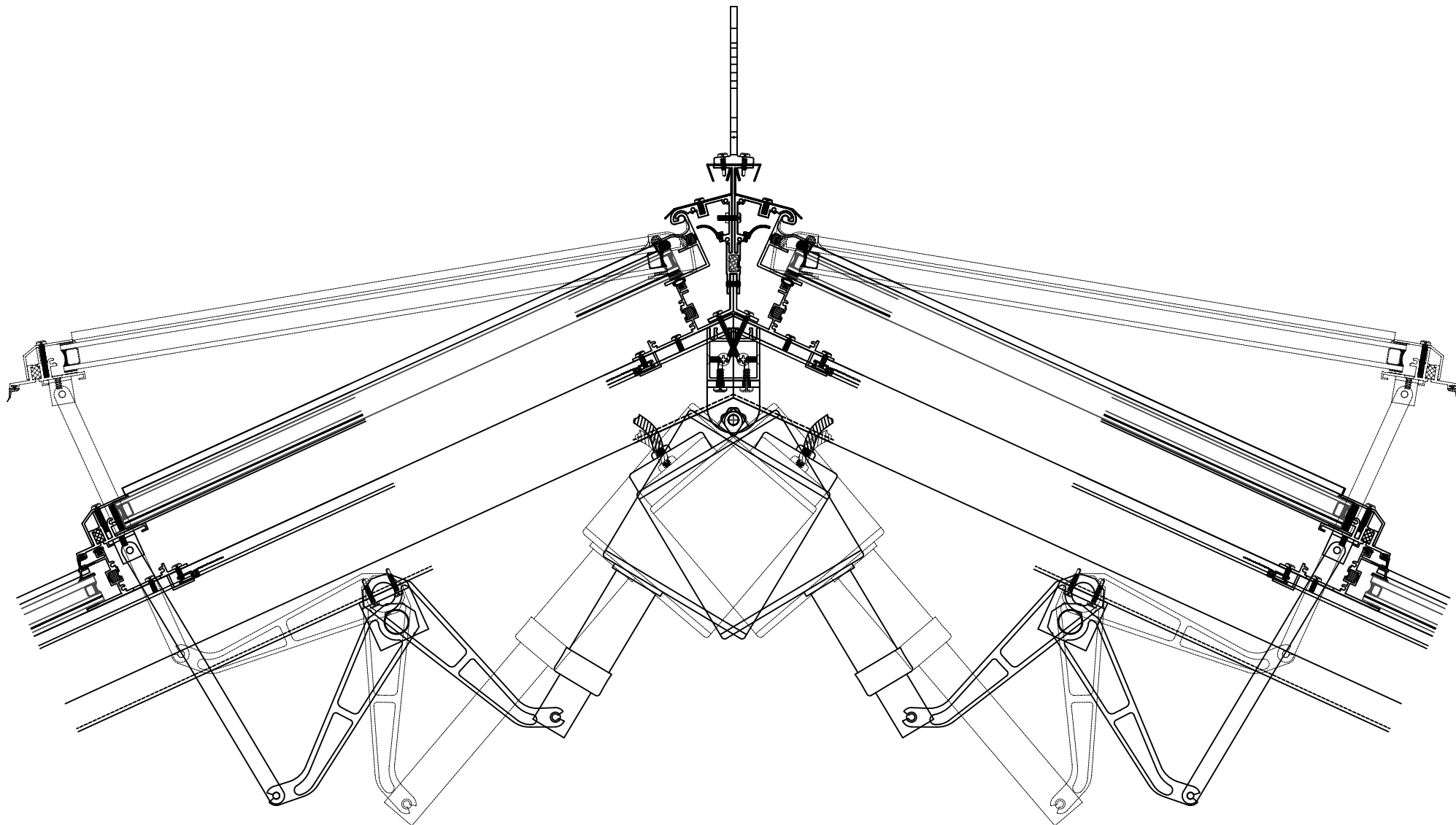
ALL DRAWINGS  
ARE VIEWED FROM  
THE EXTERIOR  
LOOKING IN.

DRAWING  
SCALE:  
NOT TO SCALE

ALL DATA CONTAINED HEREIN IS CONSIDERED COMPANY CONFIDENTIAL INFORMATION AND IS SUBJECT TO OUR CONFIDENTIALITY AGREEMENT AS SET FORTH ON OUR WEBSITE AT <http://www.solarinnovations.com/contact/>



© 2017 Solar Innovations, Inc. - All Rights Reserved. These plans are the property of Solar Innovations, Inc. Any use or reproduction of these plans, in whole or in part, without the written permission of Solar Innovations, Inc. is forbidden.



© 2017 Solar Innovations, Inc. - All Rights Reserved. These plans are the property of Solar Innovations, Inc. Any use or reproduction of these plans, in whole or in part, without the written permission of Solar Innovations, Inc. is forbidden.