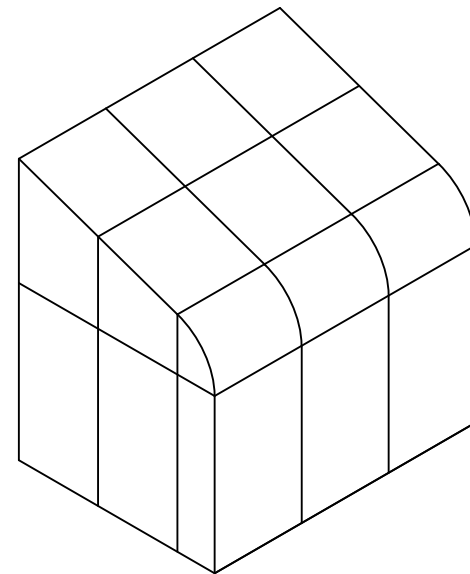
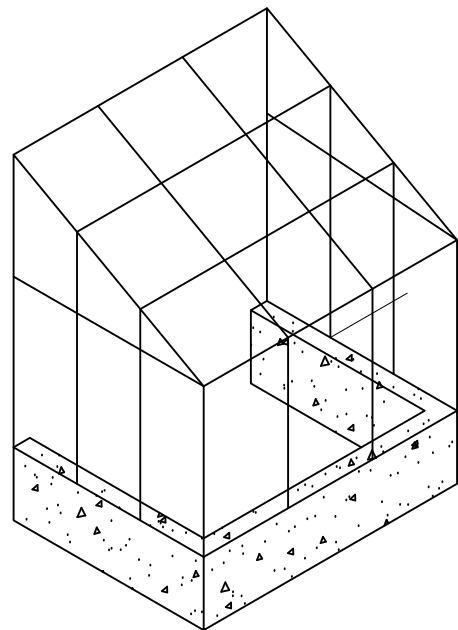


CURVED EAVE DOUBLE PITCH



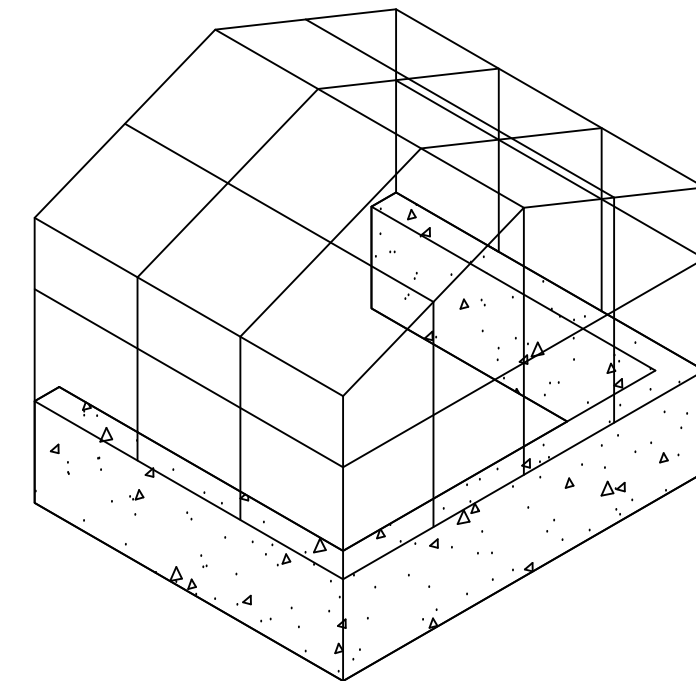
CURVED EAVE LEAN-TO



STRAIGHT EAVE LEAN-TO

ISOMETRIC ELEVATION

NOT TO SCALE



STRAIGHT EAVE DOUBLE PITCH

UNIT INFORMATION

GLAZING SET UP: Opening for  $\frac{3}{16}$ " Monolithic Glazing to 1" Insulated Glazing, Polycarbonate, or Solid Panel Infill

Decorative interior and exterior low profile grid option.

Custom Configurations Available Upon Request

Designed and Manufactured in the U.S.A.

© 2017 Solar Innovations, Inc. - All Rights Reserved. These plans are the property of Solar Innovations, Inc. Any use or reproduction of these plans, in whole or in part, without the written permission of Solar Innovations, Inc. is forbidden.



**SOLAR INNOVATIONS®**  
GLASS STRUCTURES

## SI5000 Glazed Structures - Design Sample Options

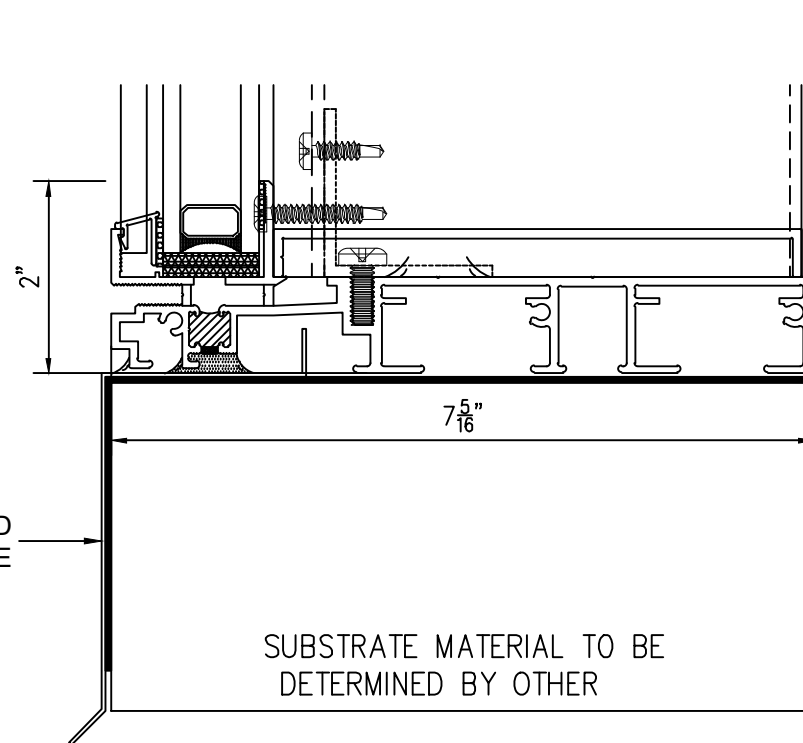
ALL DATA CONTAINED HERE IN IS CONSIDERED COMPANY CONFIDENTIAL INFORMATION AND IS SUBJECT TO OUR CONFIDENTIALITY AGREEMENT AS SET FORTH ON OUR WEBSITE AT <http://www.solarinnovations.com/contact/>

ALL DRAWINGS  
ARE VIEWED  
FROM THE  
EXTERIOR  
LOOKING IN.

DRAWING  
SCALE:  
NOT TO SCALE

HEAVY INSULATED SILL

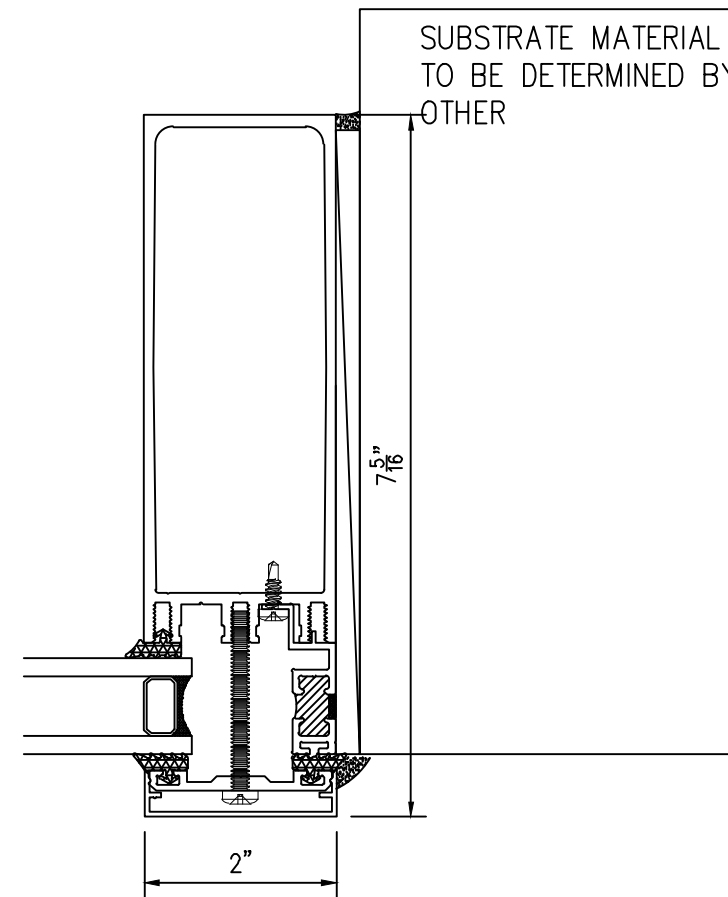
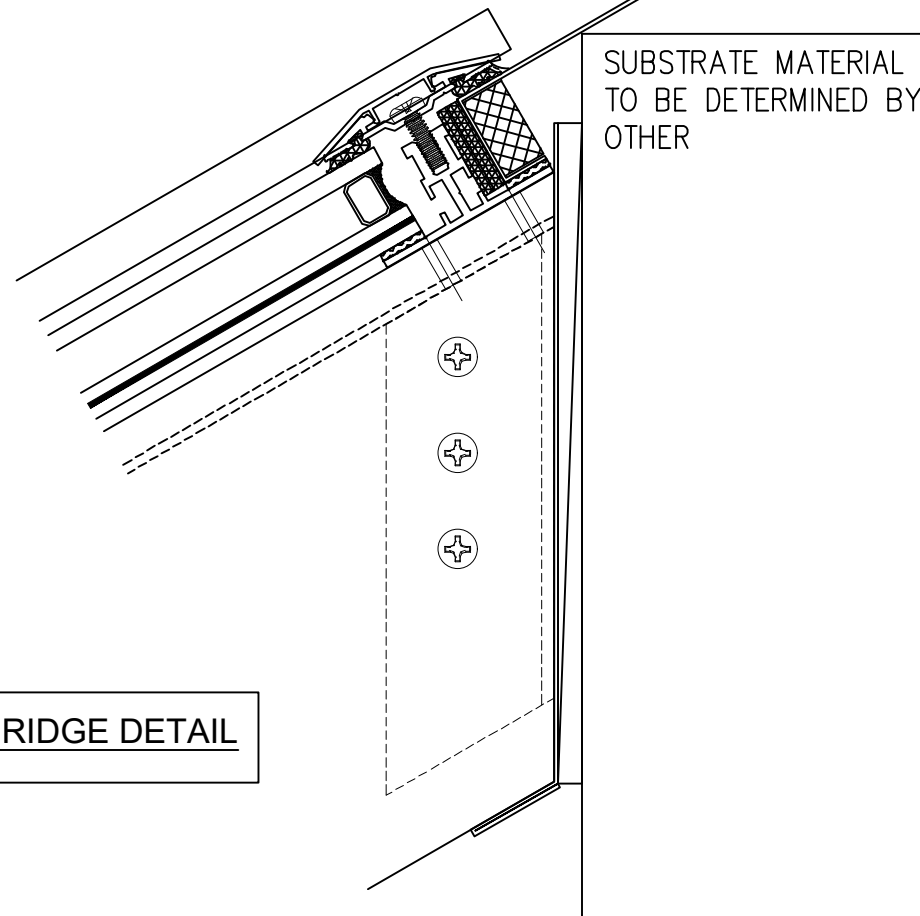
FLASHING TO BE DETERMINED  
BASED ON EXISTING STRUCTURE

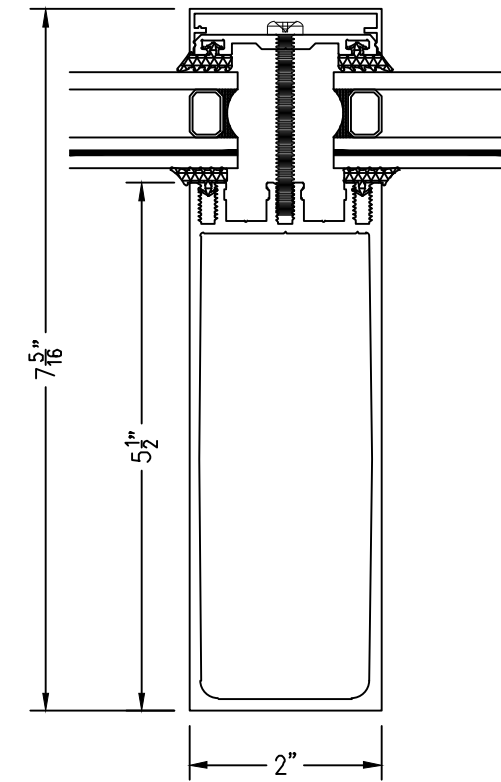


FLASHING TO BE DETERMINED  
BASED ON EXISTING STRUCTURE

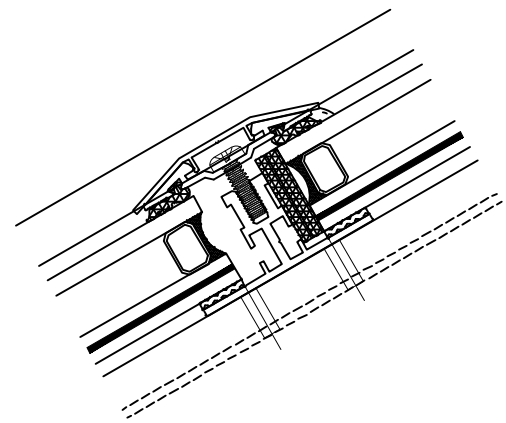
SUBSTRATE MATERIAL  
TO BE DETERMINED BY  
OTHER

LEAN-TO RIDGE DETAIL

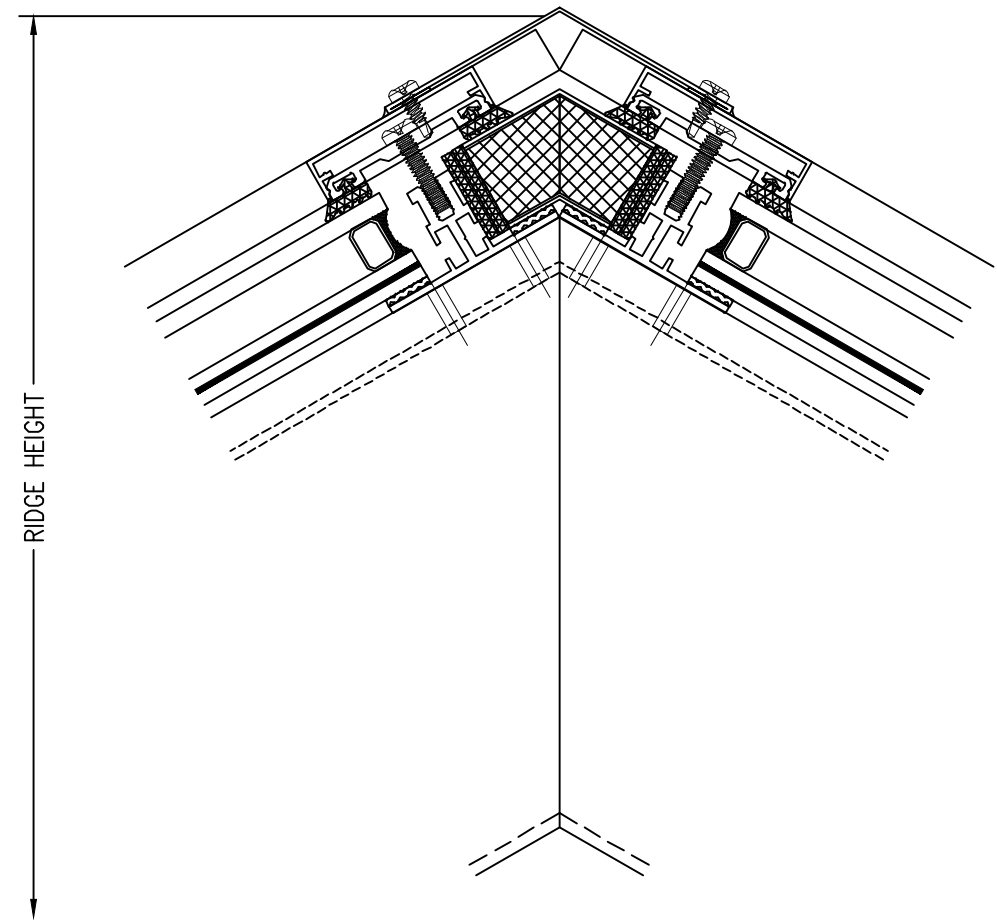




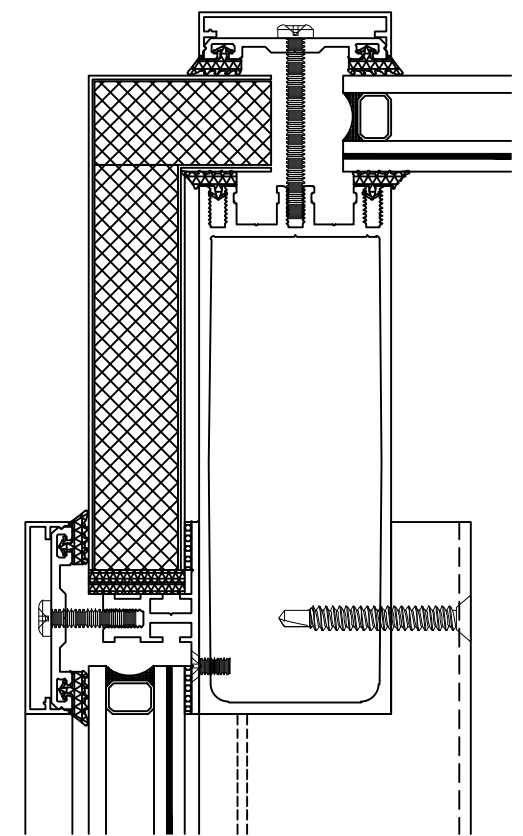
SLOPED JAMB DETAIL



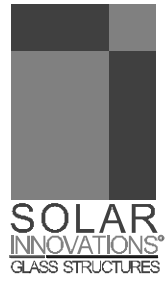
SLOPED MUNTIN DETAIL



DOUBLE PITCH RIDGE DETAIL



SLOPED GABLE DETAIL



# SI5000 Glazed Structures - Standard Details

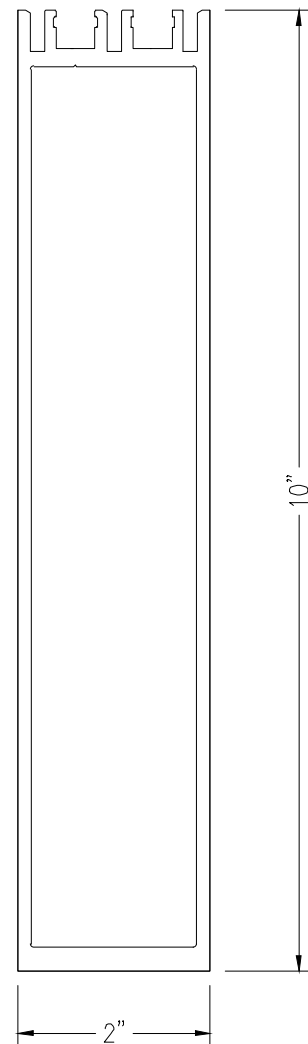
ALL DATA CONTAINED HEREIN IS CONSIDERED COMPANY CONFIDENTIAL INFORMATION AND IS SUBJECT TO OUR CONFIDENTIALITY AGREEMENT AS SET FORTH ON OUR WEBSITE AT <http://www.solarinnovations.com/contact/>

DRAWING SCALE:  
6" = 1'-0"

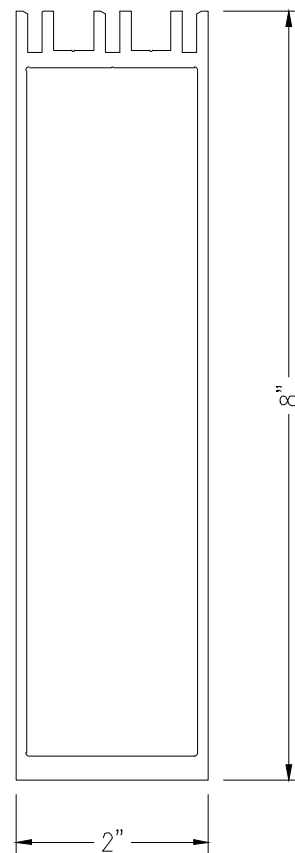
PAGE No.:

# 2" SYSTEM RAFTERS

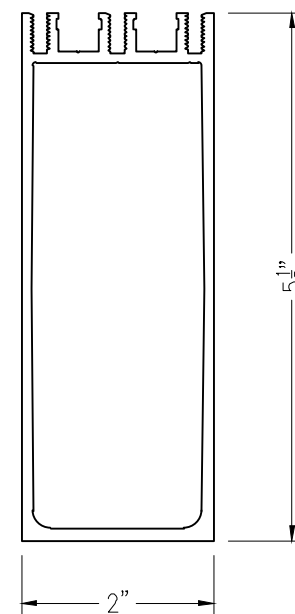
2x10



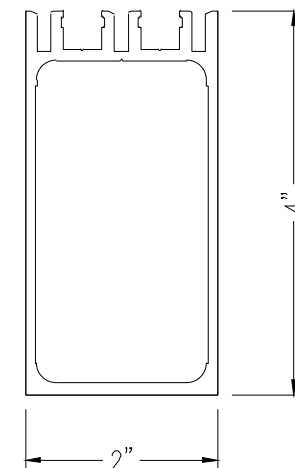
2x8



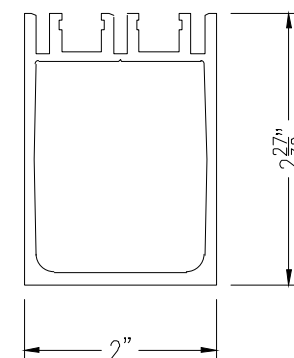
HEAVY  
GLAZING  
BAR



2x4



REGULAR  
GLAZING  
BAR



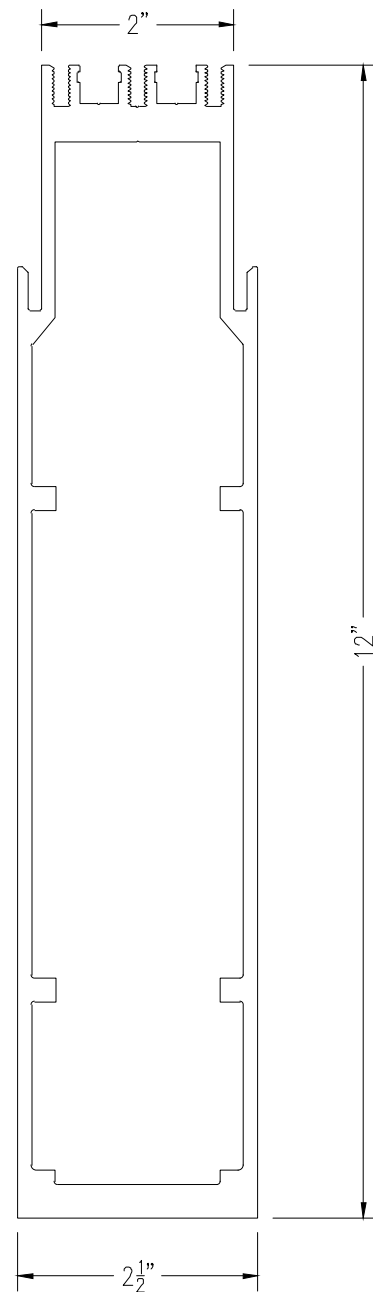
\*\*

Rafter Approval based on Final Engineering

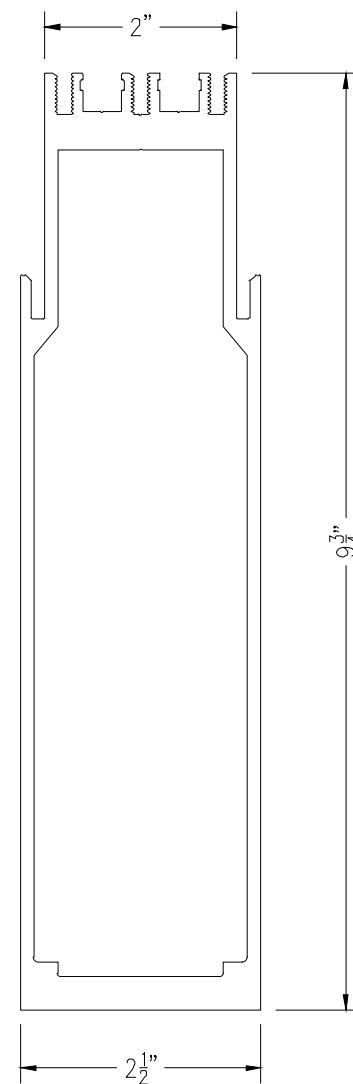
\*\*

# 2 1/2" SYSTEM RAFTERS

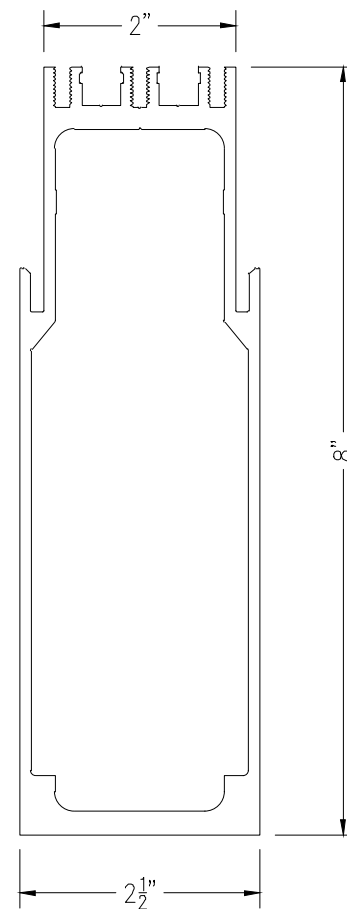
2 1/2 X 12



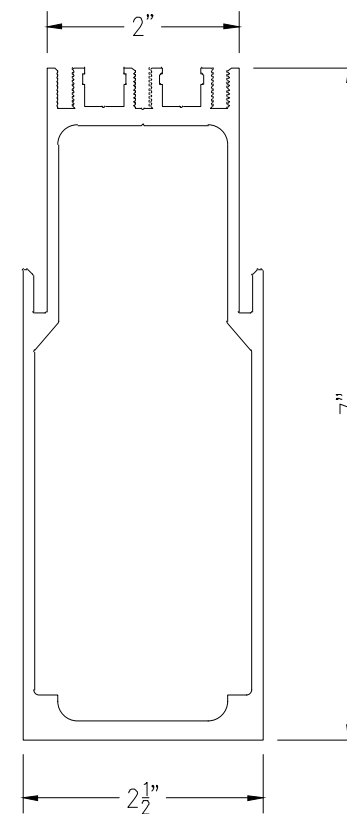
2 1/2 X 9 3/4



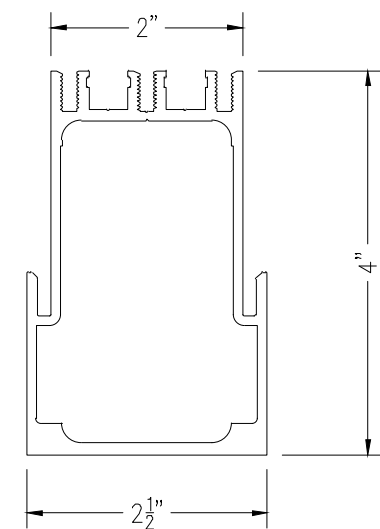
2 1/2 X 8



2 1/2 X 7

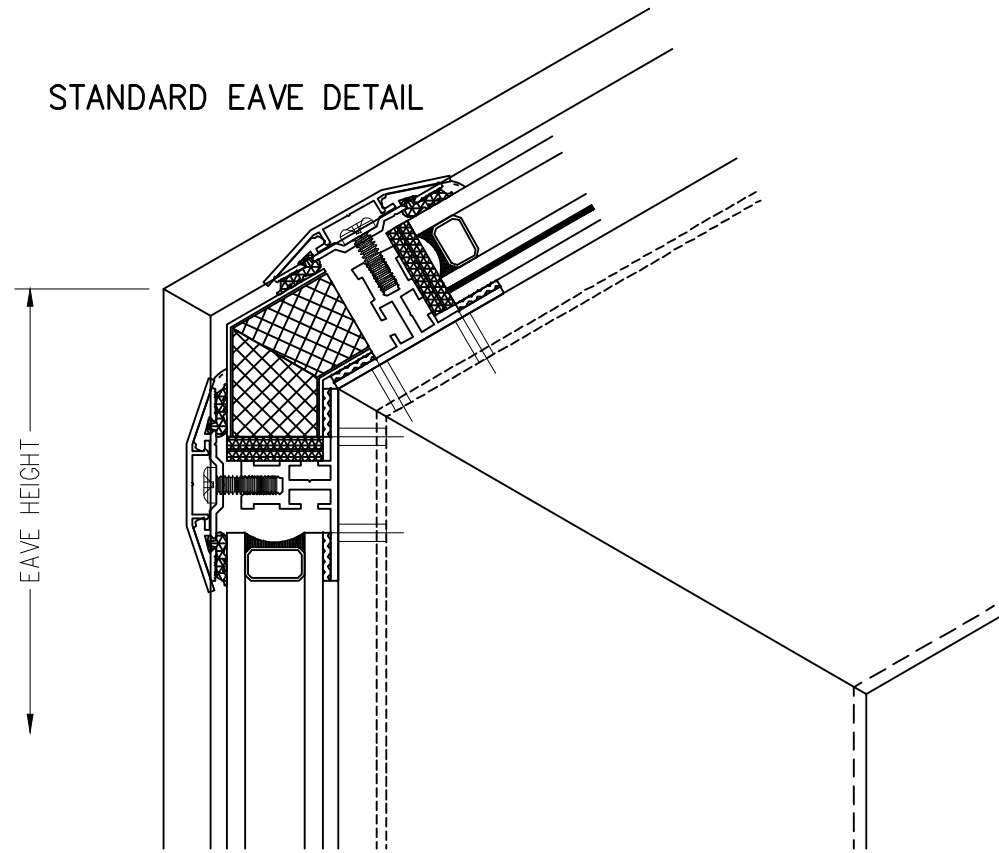


2 1/2 X 4

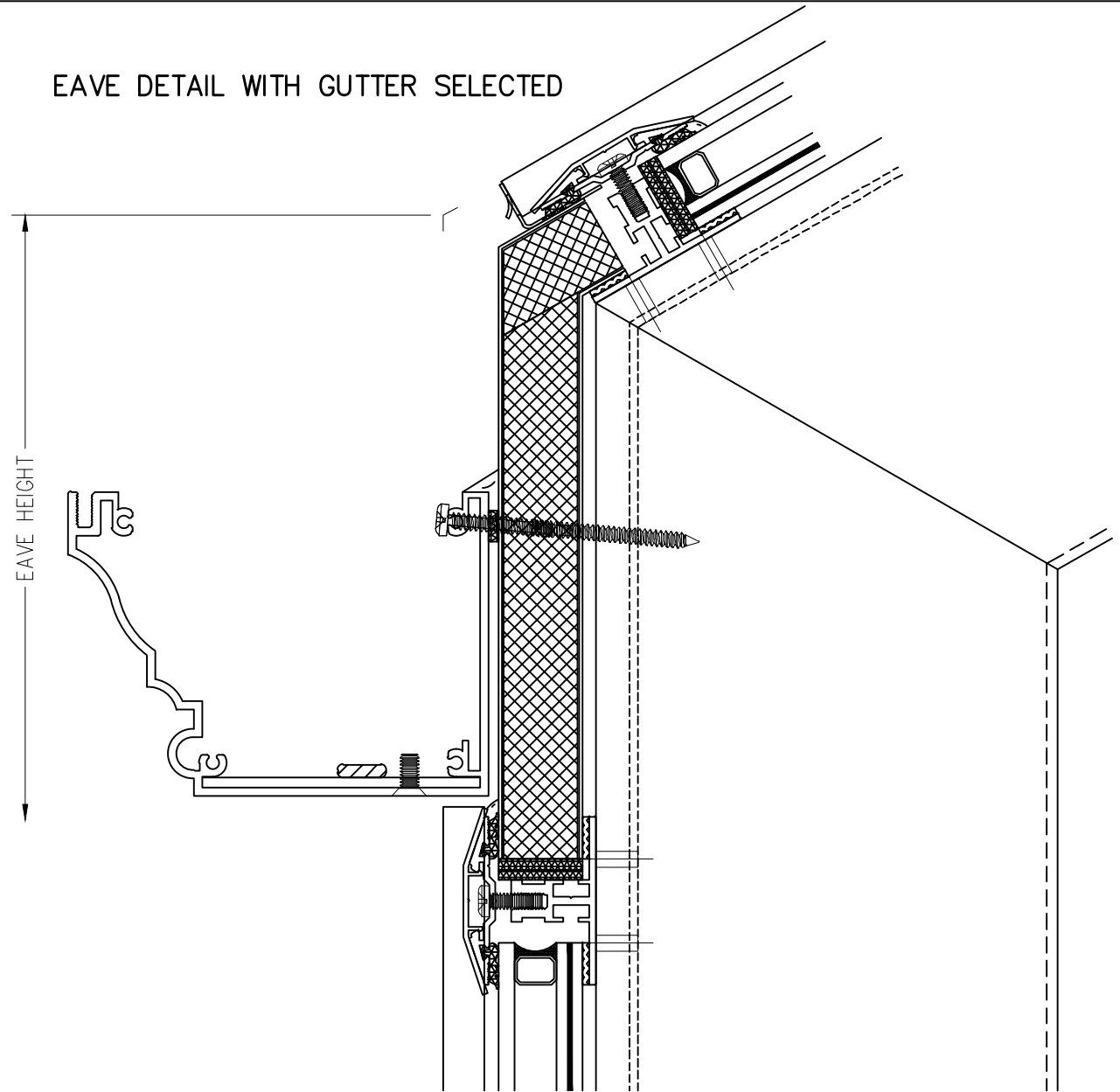


\*\* Rafter Approval based on Final Engineering \*\*

STANDARD EAVE DETAIL

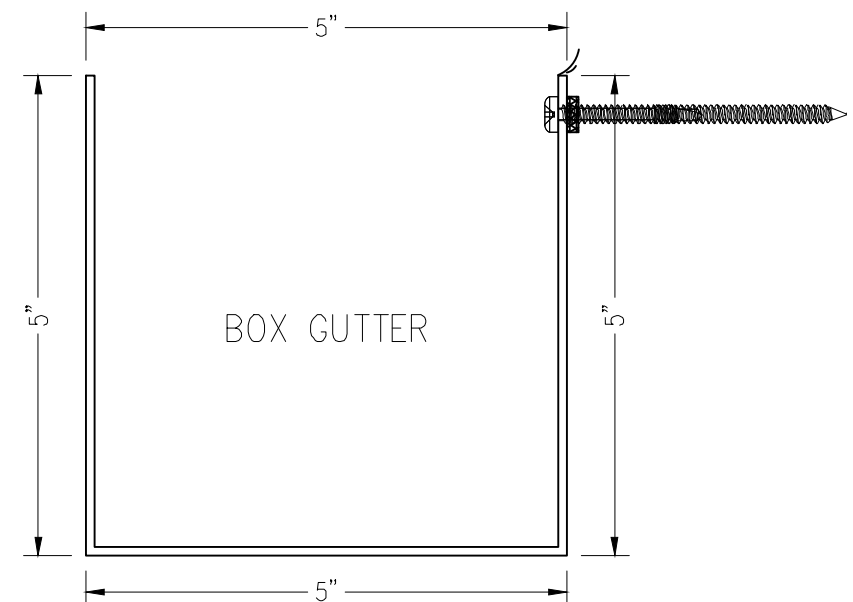
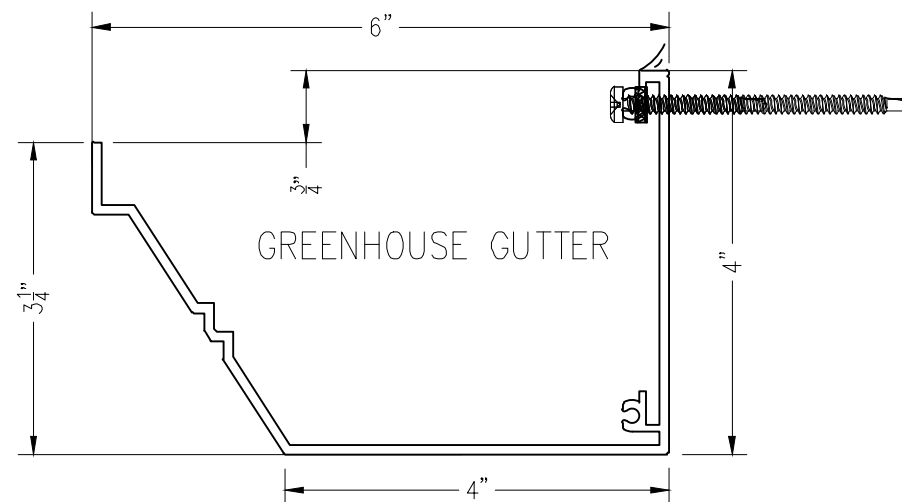
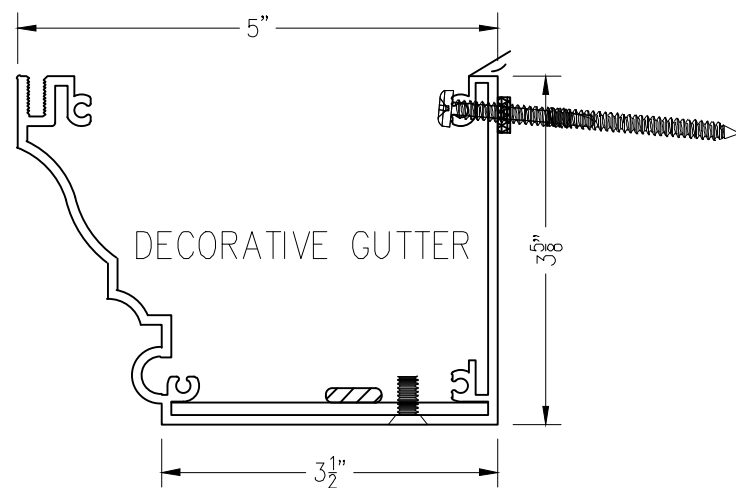


EAVE DETAIL WITH GUTTER SELECTED



**\*\*COLOR MATCHED 2 1/2" ROUND DOWNSPOUTS & ELBOWS ALSO AVAILABLE\*\***

SI STANDARD GUTTER PROFILES



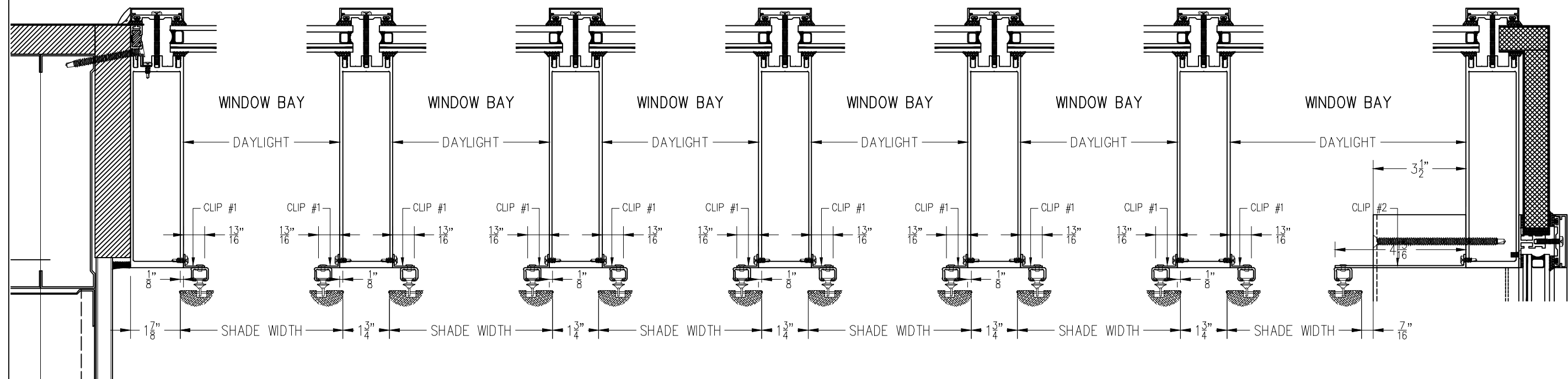
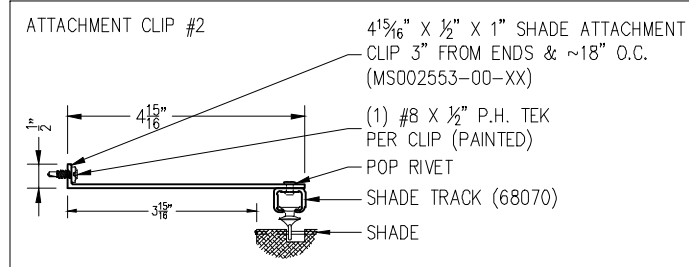
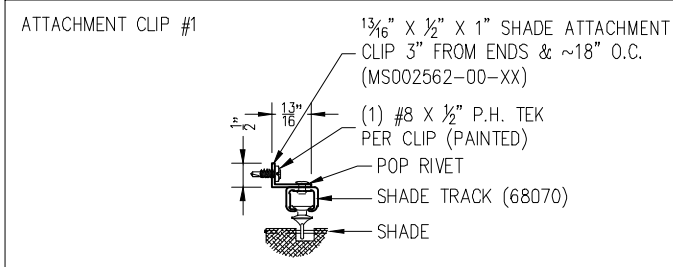
# SI5000 Glazed Structures - Shade Details

ALL DATA CONTAINED HEREIN IS CONSIDERED COMPANY CONFIDENTIAL INFORMATION AND IS SUBJECT TO OUR CONFIDENTIALITY AGREEMENT AS SET FORTH ON OUR WEBSITE AT <http://www.solarinnovations.com/contact/>

DRAWING SCALE:  
3" = 1'-0"

PAGE No.:

6 OF 6



SHADE  
LAYOUT  
STANDARD DETAIL