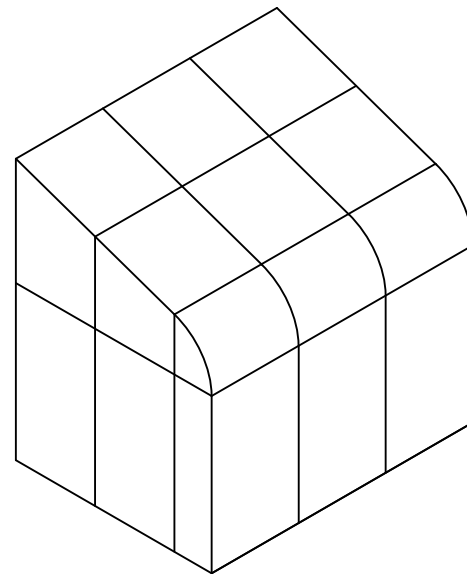
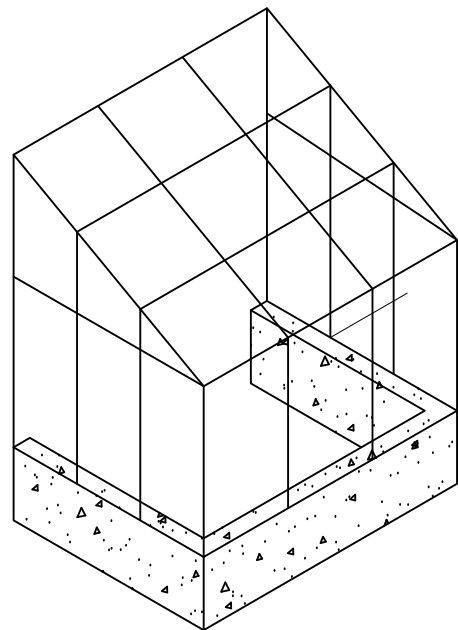


CURVED EAVE DOUBLE PITCH



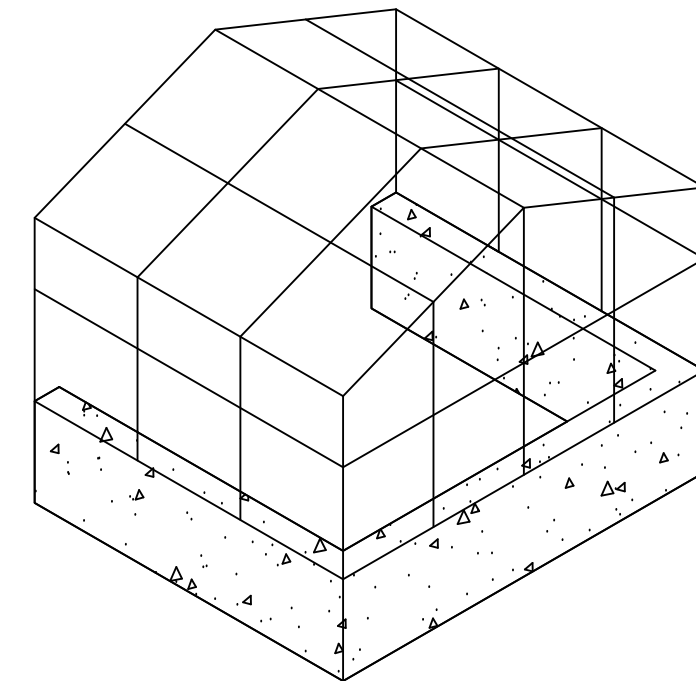
CURVED EAVE LEAN-TO



STRAIGHT EAVE LEAN-TO

ISOMETRIC ELEVATION

NOT TO SCALE



STRAIGHT EAVE DOUBLE PITCH

UNIT INFORMATION

GLAZING SET UP: Opening for  $\frac{3}{16}$ " Monolithic Glazing to 1" Insulated Glazing, Polycarbonate, or Solid Panel Infill

Decorative interior and exterior low profile grid option.

Custom Configurations Available Upon Request

Designed and Manufactured in the U.S.A.

© 2017 Solar Innovations, Inc. - All Rights Reserved. These plans are the property of Solar Innovations, Inc. Any use or reproduction of these plans, in whole or in part, without the written permission of Solar Innovations, Inc. is forbidden.



**SOLAR INNOVATIONS®**  
GLASS STRUCTURES

## SI5000 Glazed Structures - Design Sample Options

ALL DATA CONTAINED HERE IN IS CONSIDERED COMPANY CONFIDENTIAL INFORMATION AND IS SUBJECT TO OUR CONFIDENTIALITY AGREEMENT AS SET FORTH ON OUR WEBSITE AT <http://www.solarinnovations.com/contact/>

ALL DRAWINGS  
ARE VIEWED  
FROM THE  
EXTERIOR  
LOOKING IN.

DRAWING  
SCALE:  
NOT TO SCALE

FLASHING TO BE DETERMINED  
BASED ON EXISTING STRUCTURE

SUBSTRATE MATERIAL TO BE  
DETERMINED BY OTHER

FLASHING TO BE DETERMINED  
BASED ON EXISTING STRUCTURE

SUBSTRATE MATERIAL  
TO BE DETERMINED BY  
OTHER

BULBOUS CAP ATTACHED  
WITH PRESSURE PLATE  
(MS001234-00-00) AND  
(2) #10 X 3/4" P.H. TEKS  
PER PRESSURE PLATE

FLASHING TO BE DETERMINED  
BASED ON EXISTING STRUCTURE

SUBSTRATE MATERIAL TO BE  
DETERMINED BY OTHER

LEAN-TO RIDGE DETAIL

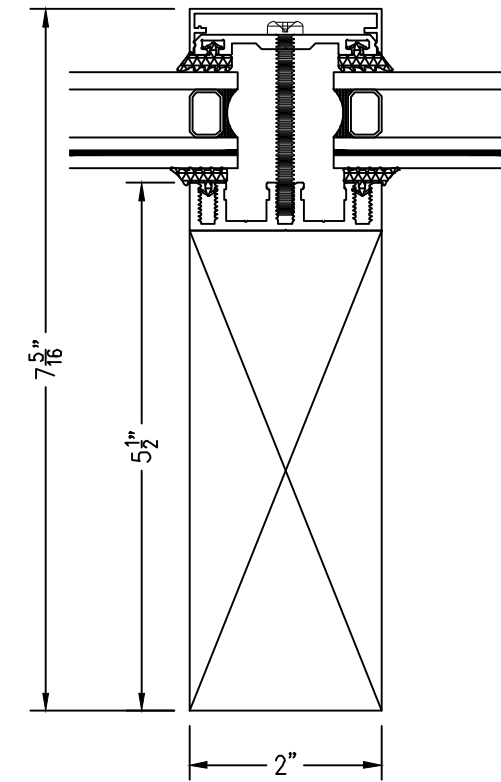
SUBSTRATE MATERIAL  
TO BE DETERMINED BY  
OTHER

FLASHING TO BE DETERMINED  
BASED ON EXISTING STRUCTURE

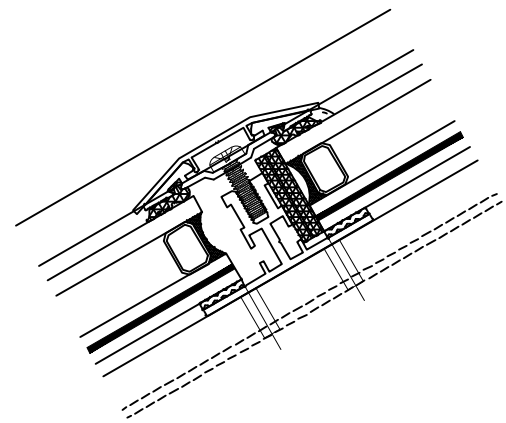
SUBSTRATE MATERIAL TO BE  
DETERMINED BY OTHER

BULBOUS CAP ATTACHED  
WITH PRESSURE PLATE  
(MS001234-00-00) AND  
(2) #10 X 3/4" P.H. TEKS  
PER PRESSURE PLATE

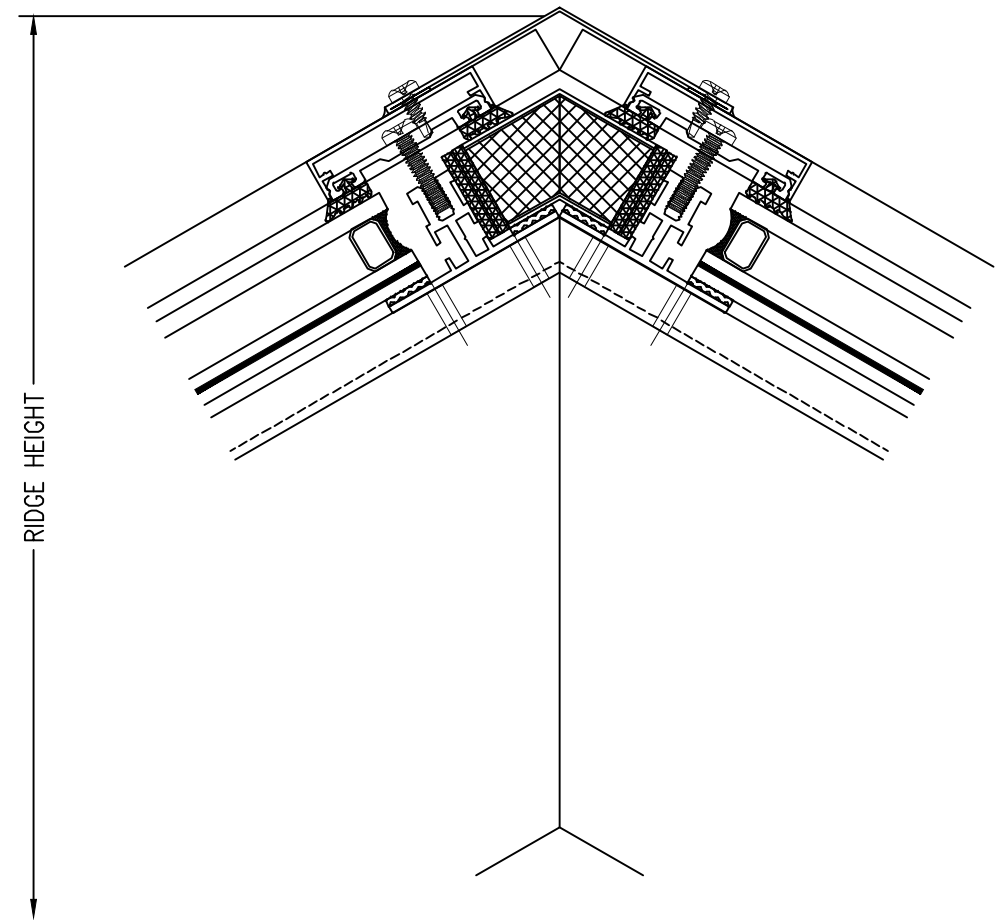
VERTICAL JAMB DETAIL



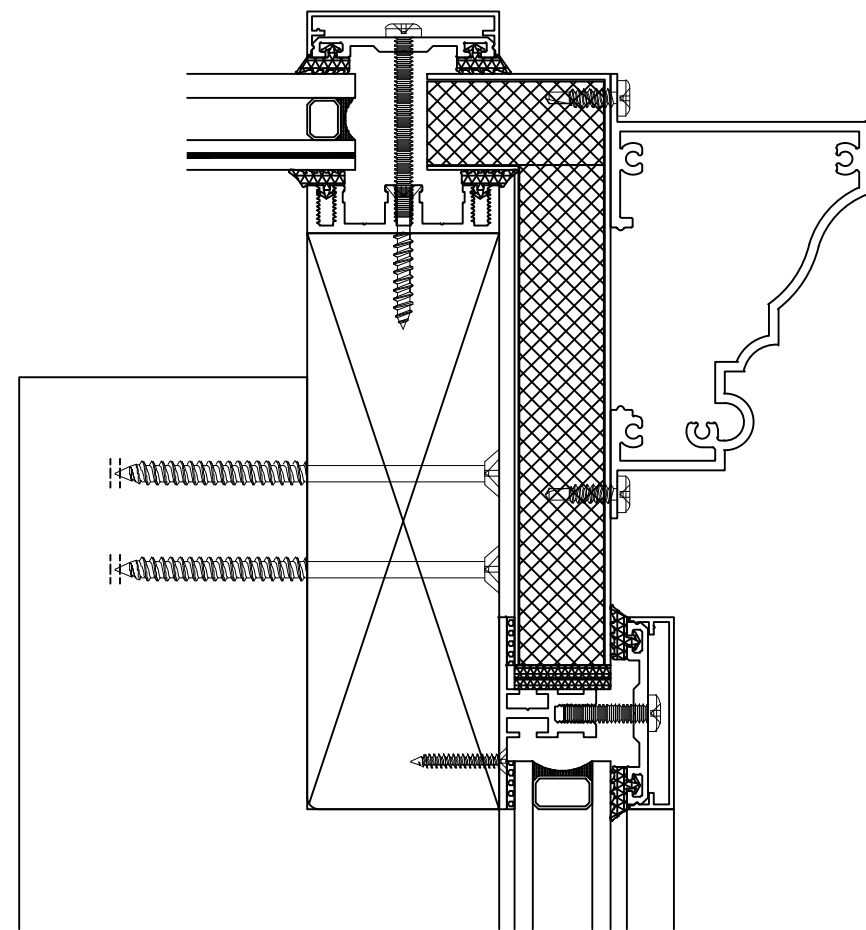
SLOPED JAMB DETAIL



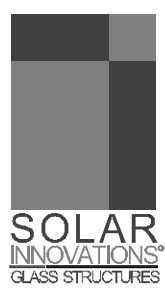
SLOPED MUNTIN DETAIL



DOUBLE PITCH RIDGE DETAIL



SLOPED GABLE DETAIL



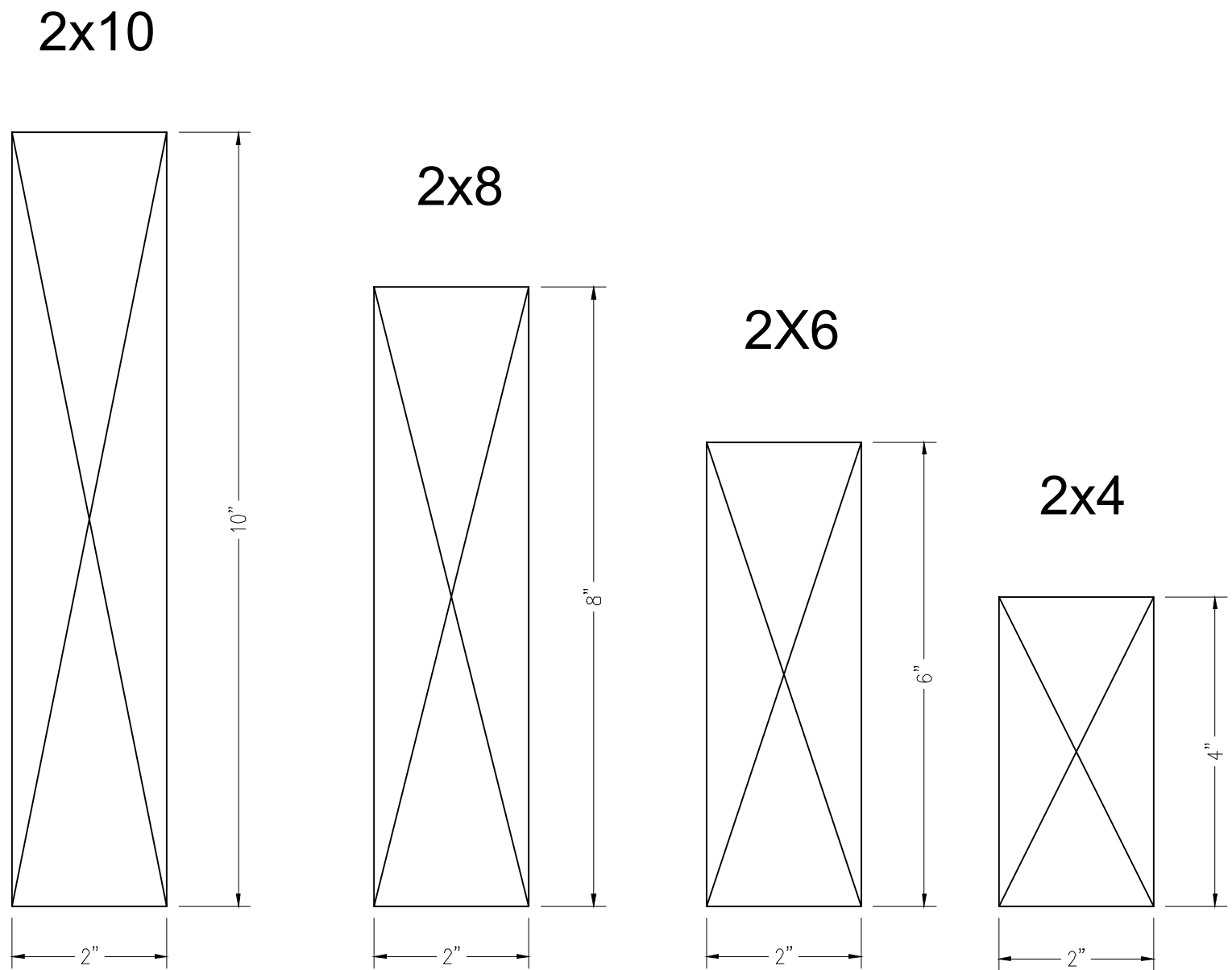
# SI5000 Glazed Structures - Standard Details

ALL DATA CONTAINED HEREIN IS CONSIDERED COMPANY CONFIDENTIAL INFORMATION AND IS SUBJECT TO OUR CONFIDENTIALITY AGREEMENT AS SET FORTH ON OUR WEBSITE AT <http://www.solarinnovations.com/contact/>

DRAWING SCALE:  
6" = 1'-0"

PAGE No.:

# 2" SYSTEM RAFTERS



\*\* Rafter Approval based on Final Engineering \*\*

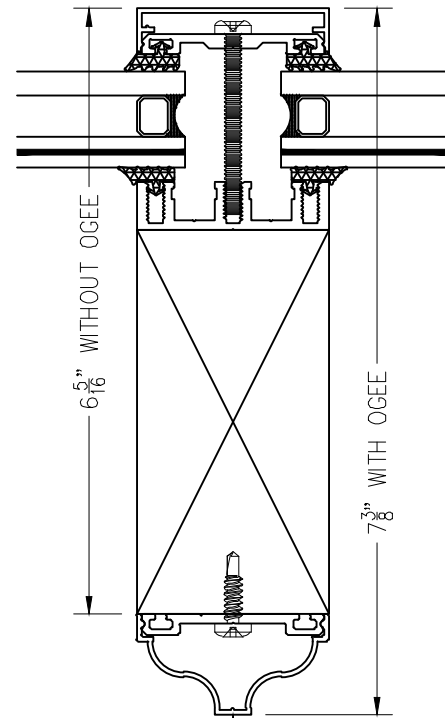
# SI5000 Glazed Structures - Rafter Accessories

ALL DATA CONTAINED HEREIN IS CONSIDERED COMPANY CONFIDENTIAL INFORMATION AND IS SUBJECT TO OUR CONFIDENTIALITY AGREEMENT AS SET FORTH ON OUR WEBSITE AT <http://www.solarinnovations.com/contact/>

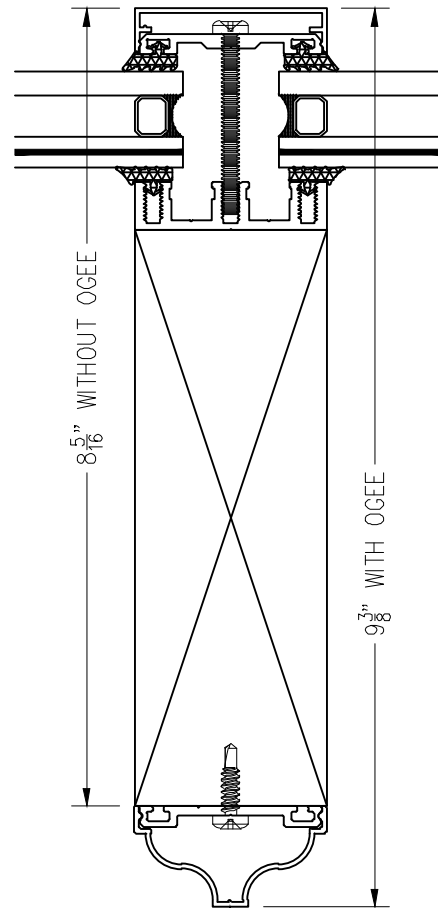
DRAWING SCALE:  
6" = 1'-0"

PAGE No.:

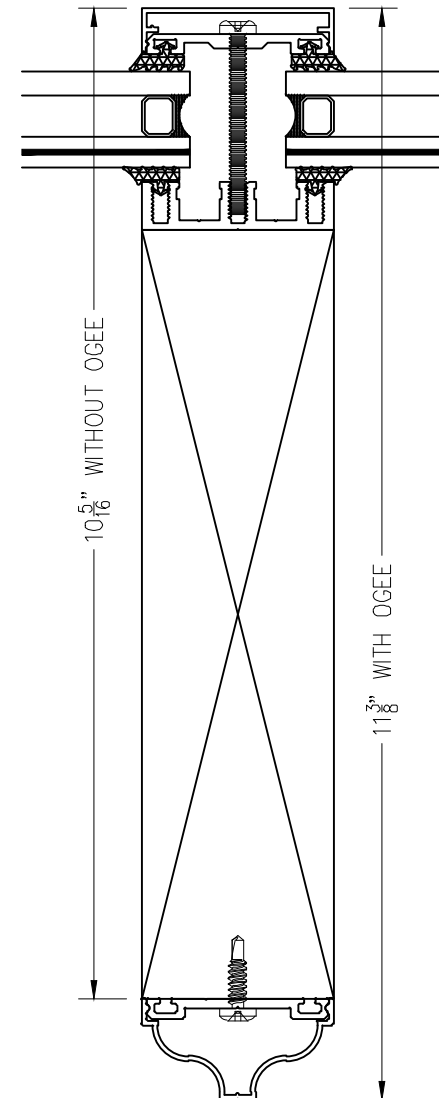
4 OF 15



DECORATIVE OGEE CAP  
ATTACHED WITH PRESSURE PLATE  
(MS001234-00-00) &  
(2) #10 X 3/4" P.H. TEKS  
PER PRESSURE PLATE

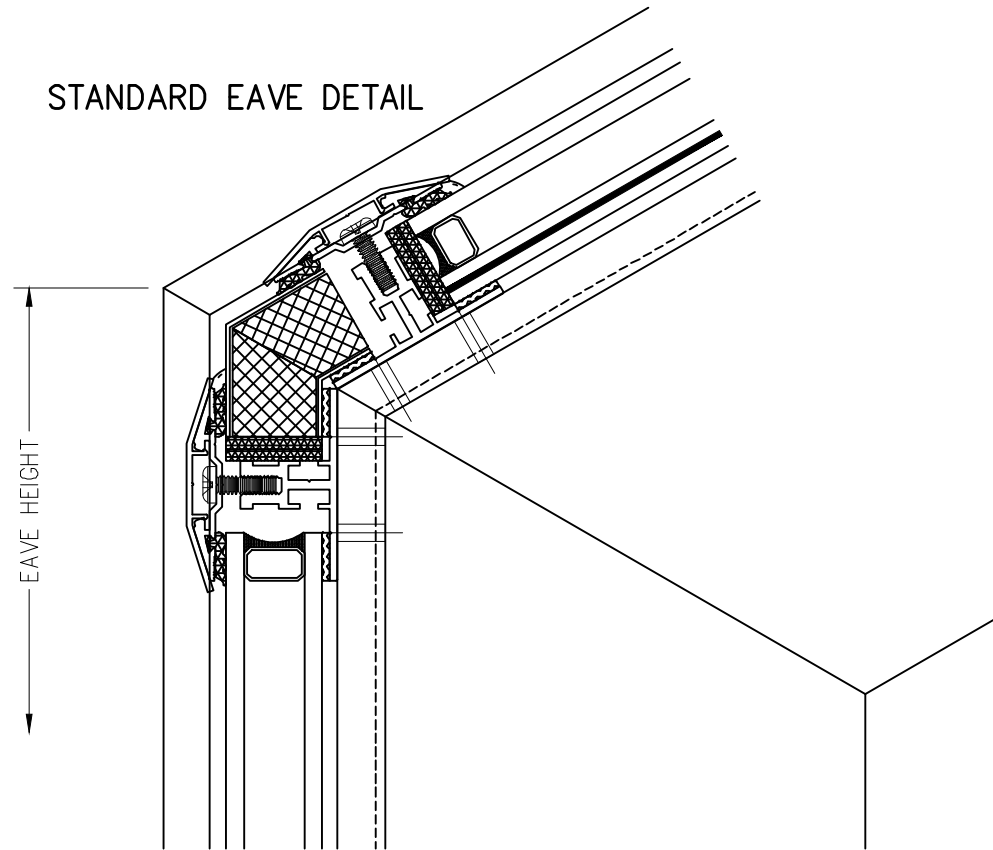


DECORATIVE OGEE CAP  
ATTACHED WITH PRESSURE PLATE  
(MS001234-00-00) &  
(2) #10 X 3/4" P.H. TEKS  
PER PRESSURE PLATE

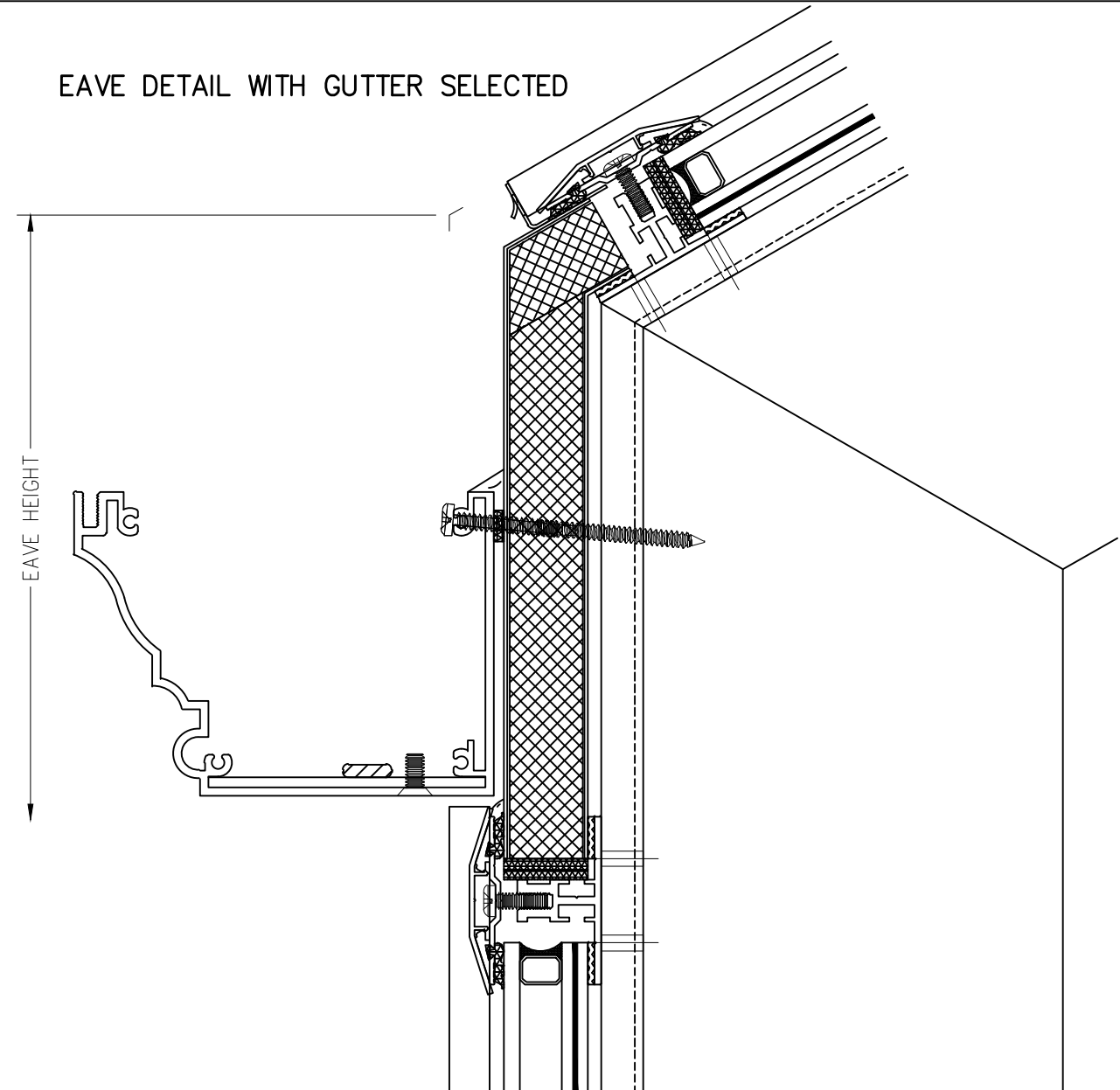


DECORATIVE OGEE CAP  
ATTACHED WITH PRESSURE PLATE  
(MS001234-00-00) &  
(2) #10 X 3/4" P.H. TEKS  
PER PRESSURE PLATE

STANDARD EAVE DETAIL

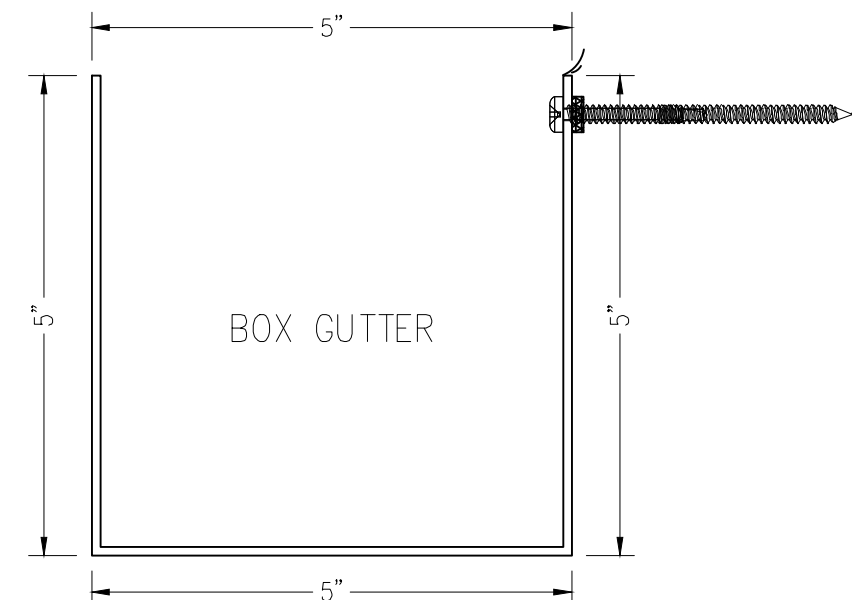
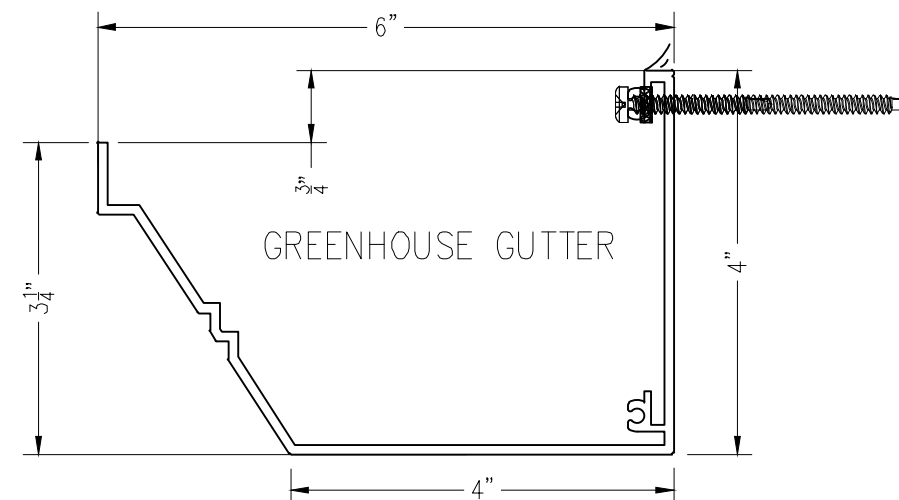
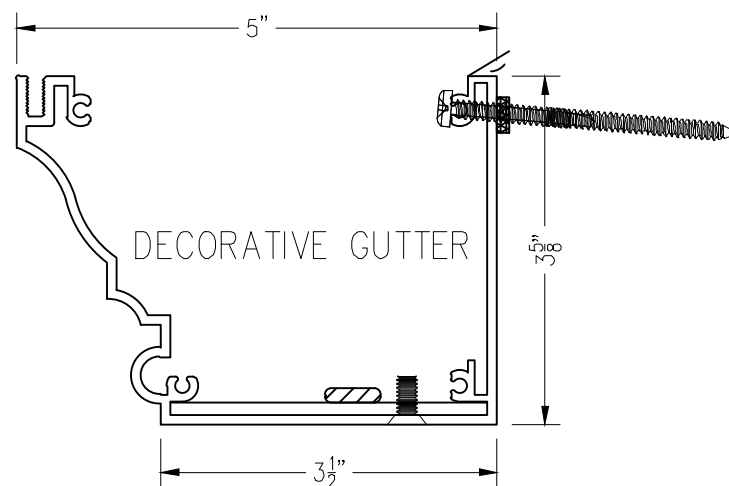


EAVE DETAIL WITH GUTTER SELECTED



**\*\*COLOR MATCHED 2 1/2" ROUND DOWNSPOUTS & ELBOWS ALSO AVAILABLE\*\***

SI STANDARD GUTTER PROFILES



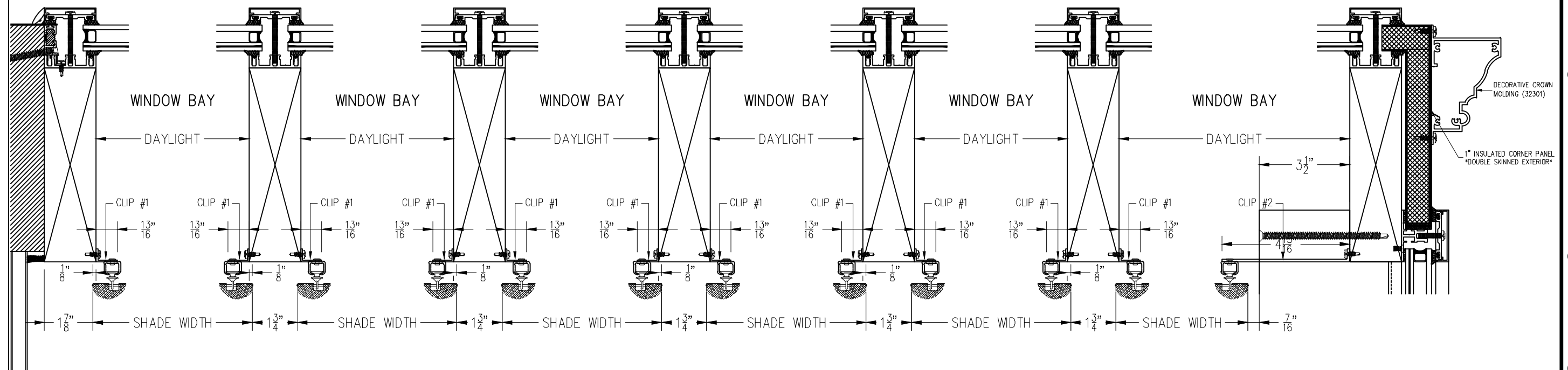
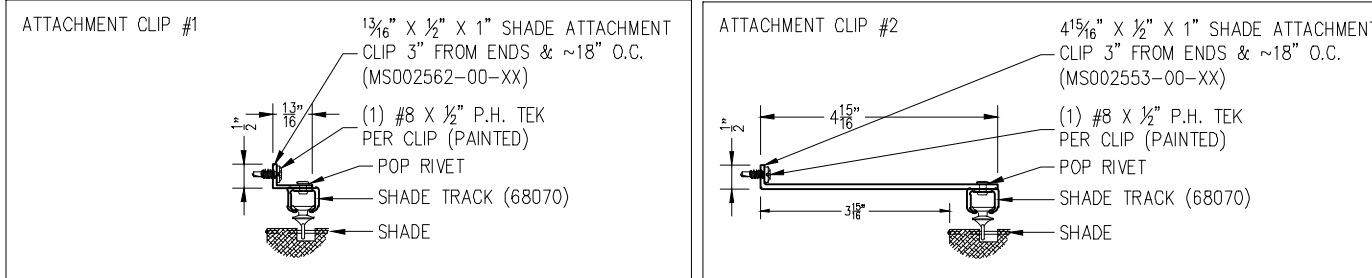
# SI5000 Glazed Structures - Shade Details

ALL DATA CONTAINED HEREIN IS CONSIDERED COMPANY CONFIDENTIAL INFORMATION AND IS SUBJECT TO OUR CONFIDENTIALITY AGREEMENT AS SET FORTH ON OUR WEBSITE AT <http://www.solarinnovations.com/contact/>

DRAWING SCALE:  
3" = 1'-0"

PAGE No.:

6 OF 15



SHADE  
LAYOUT  
STANDARD DETAIL



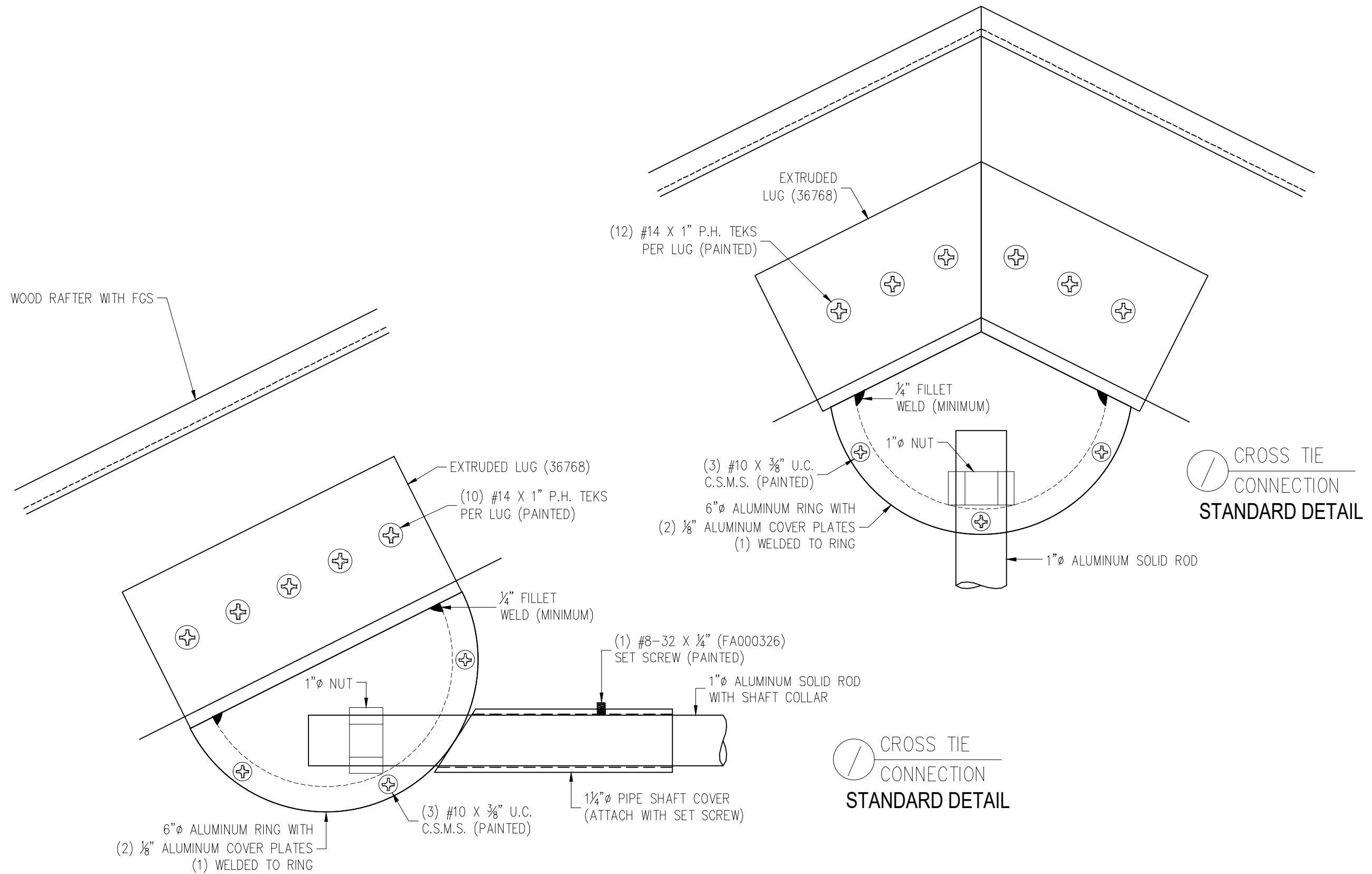
# SI5000 Glazed Structures - Decorative Cross Tie

---

DRAWING SCALE:  
3/8" = 1'-0"

PAGE No.:

7 OF 15



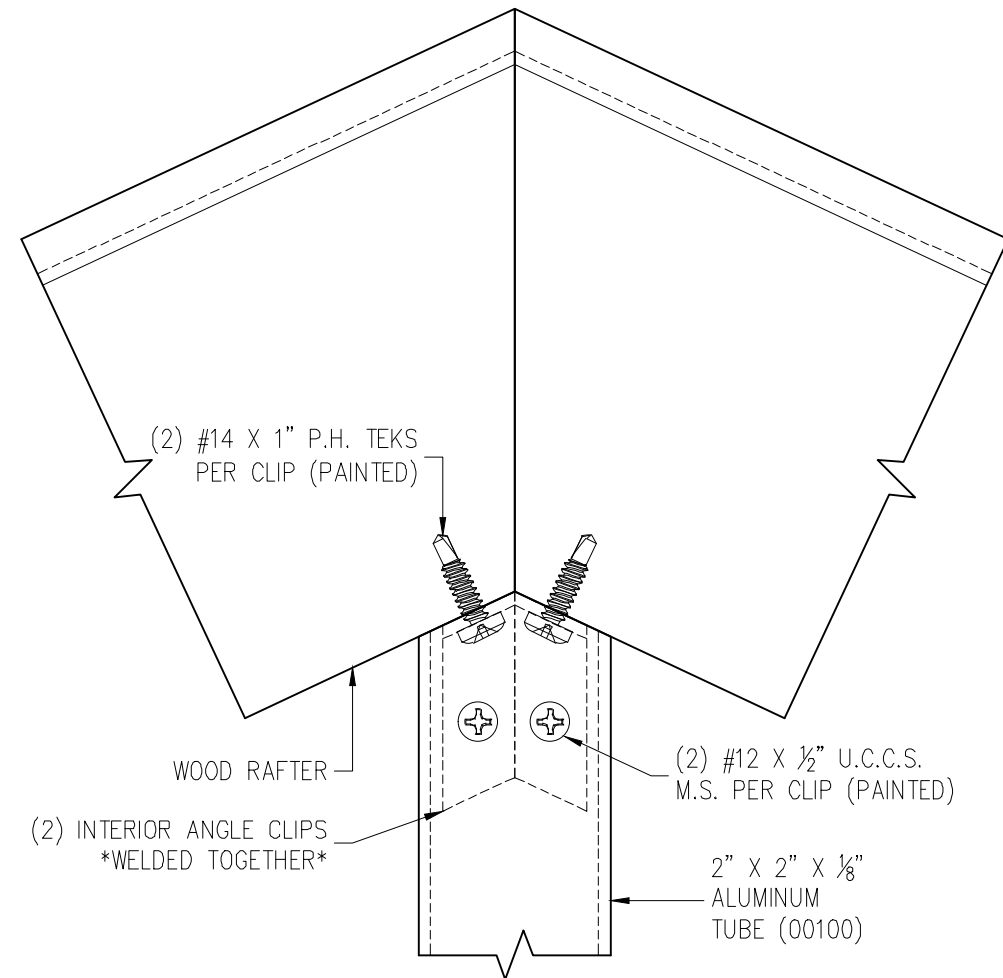


---

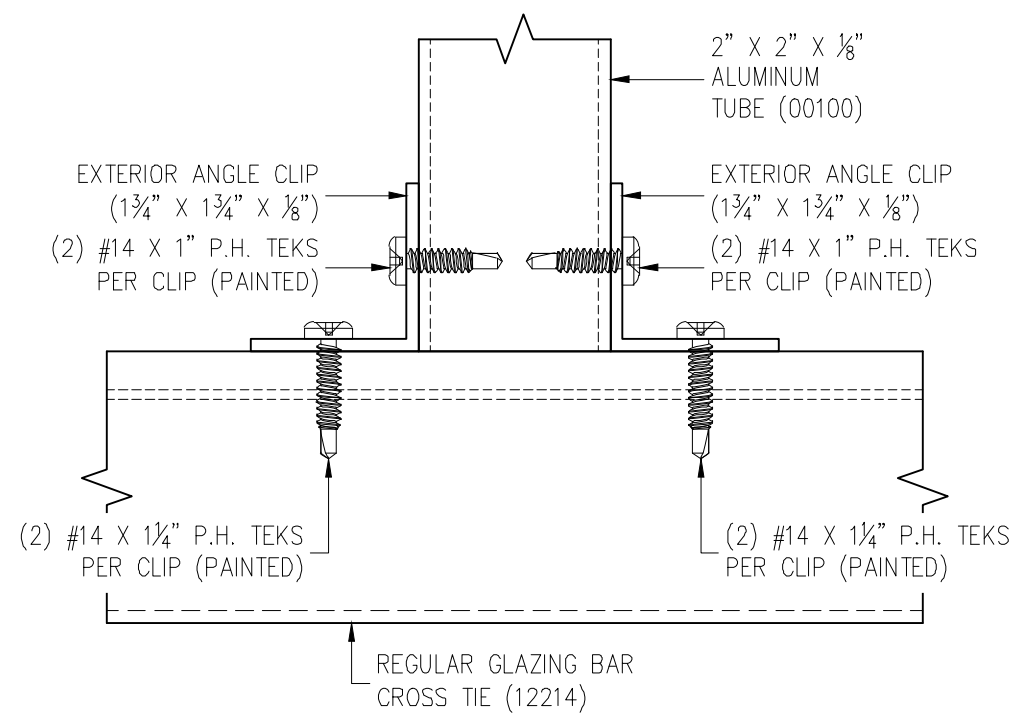
PAGE No.:

8 OF 15

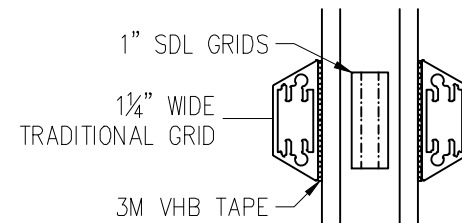
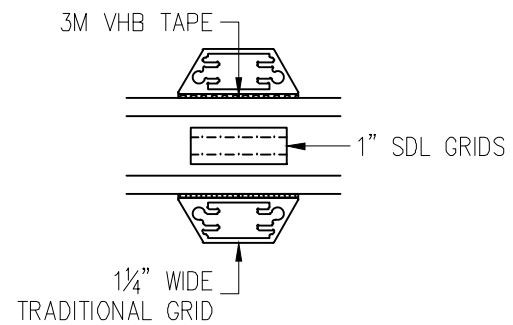
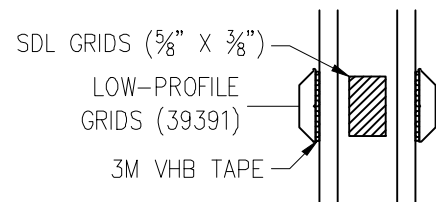
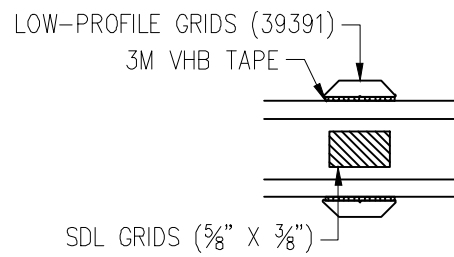
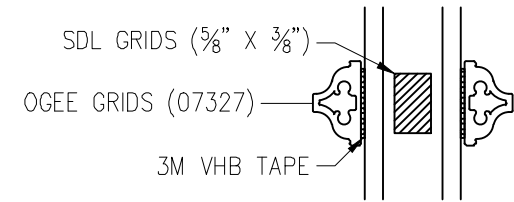
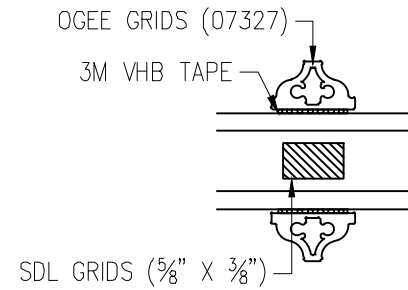
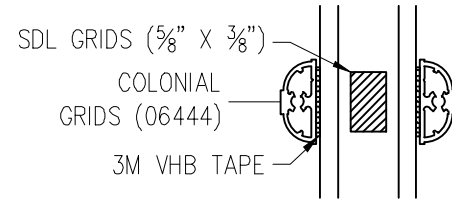
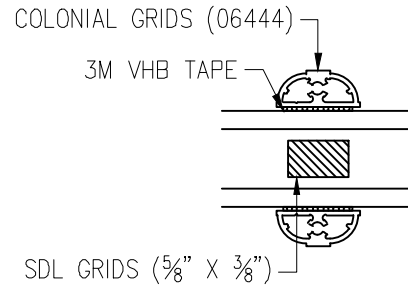
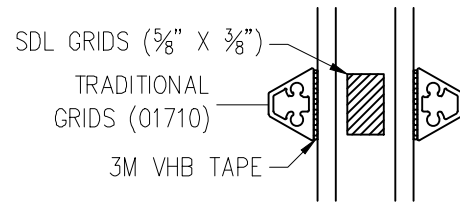
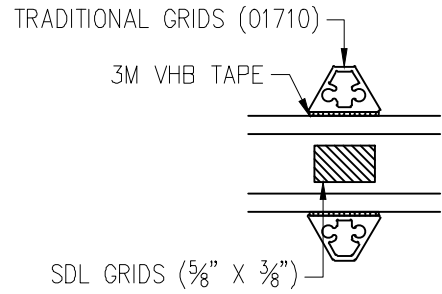




CROSS TIE  
CONNECTION  
STANDARD DETAIL



CROSS TIE  
CONNECTION  
STANDARD DETAIL



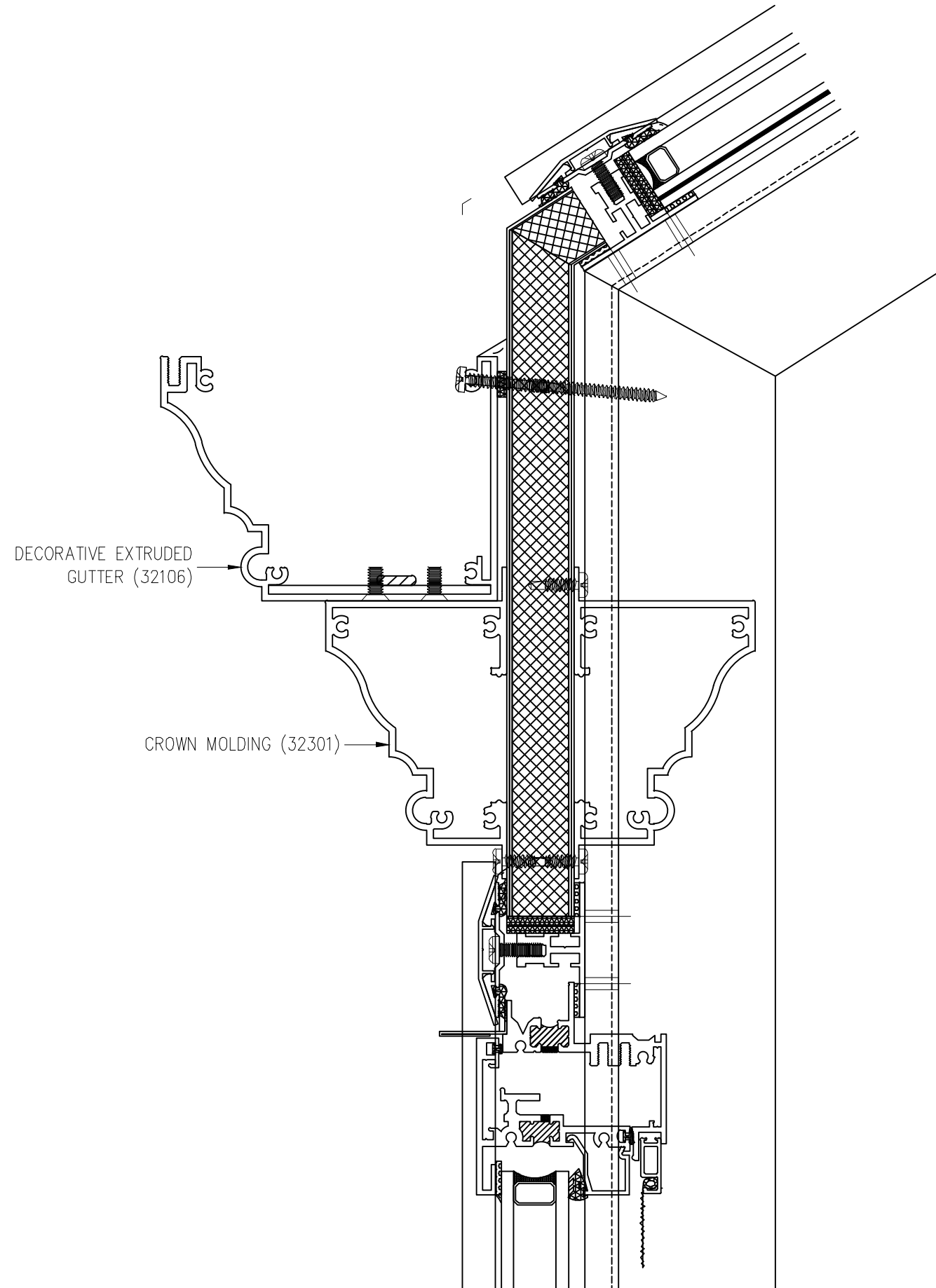
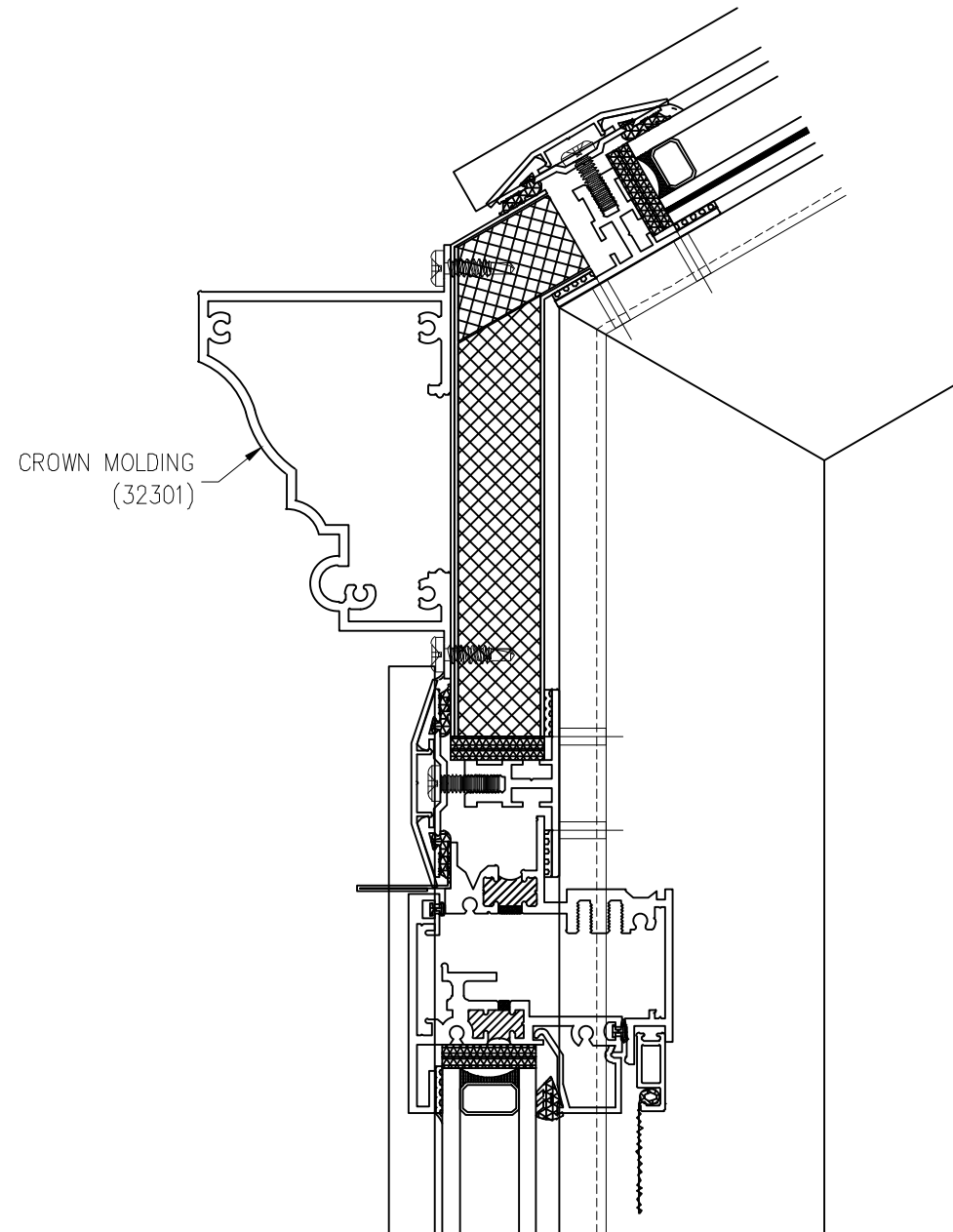
# SI5000 Glazed Structures - Crown Molding

ALL DATA CONTAINED HEREIN IS CONSIDERED COMPANY CONFIDENTIAL INFORMATION AND IS SUBJECT TO OUR CONFIDENTIALITY AGREEMENT AS SET FORTH ON OUR WEBSITE AT <http://www.solarinnovations.com/contact/>

DRAWING SCALE:  
6" = 1'-0"

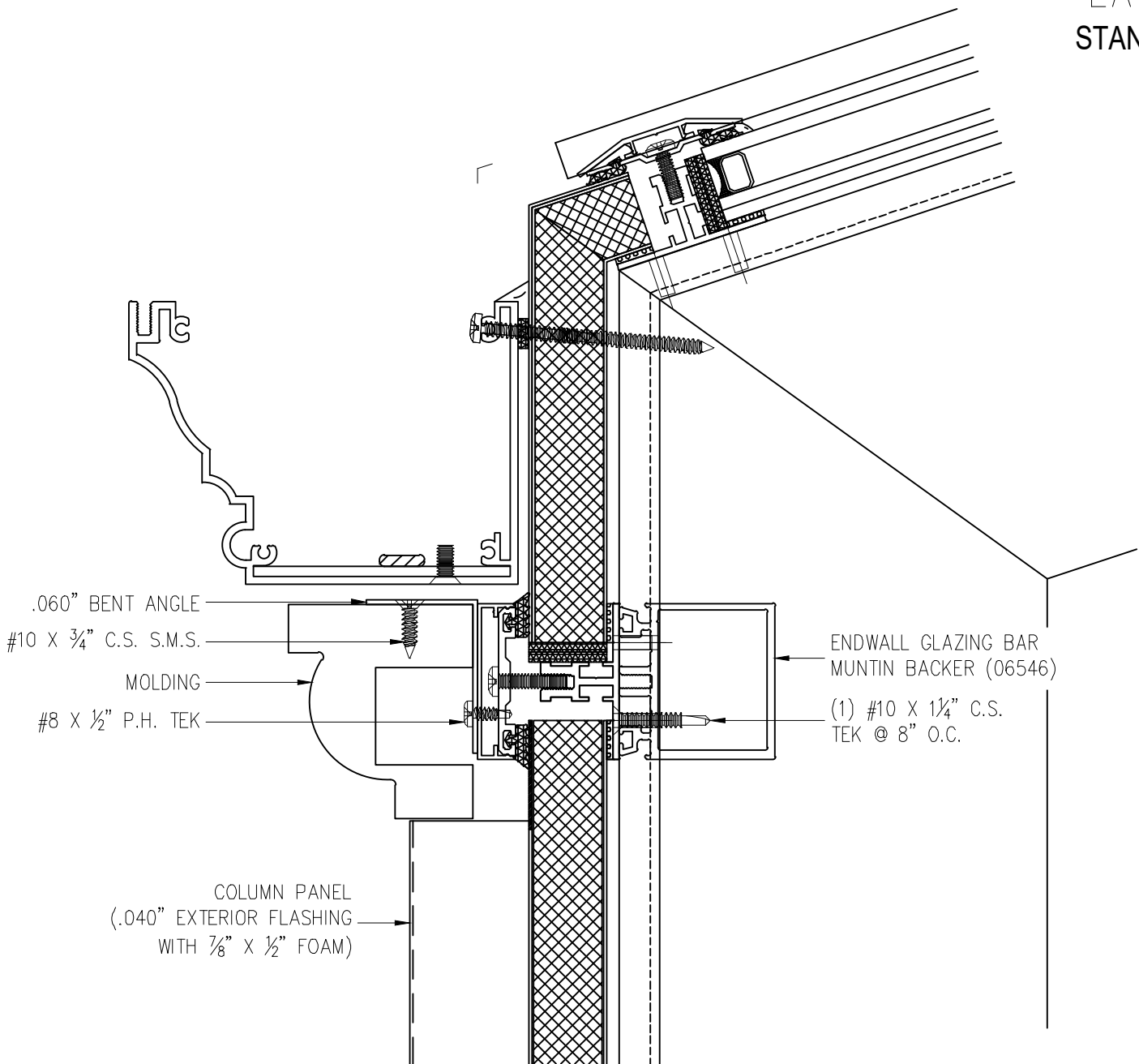
PAGE No.:

11 OF 15

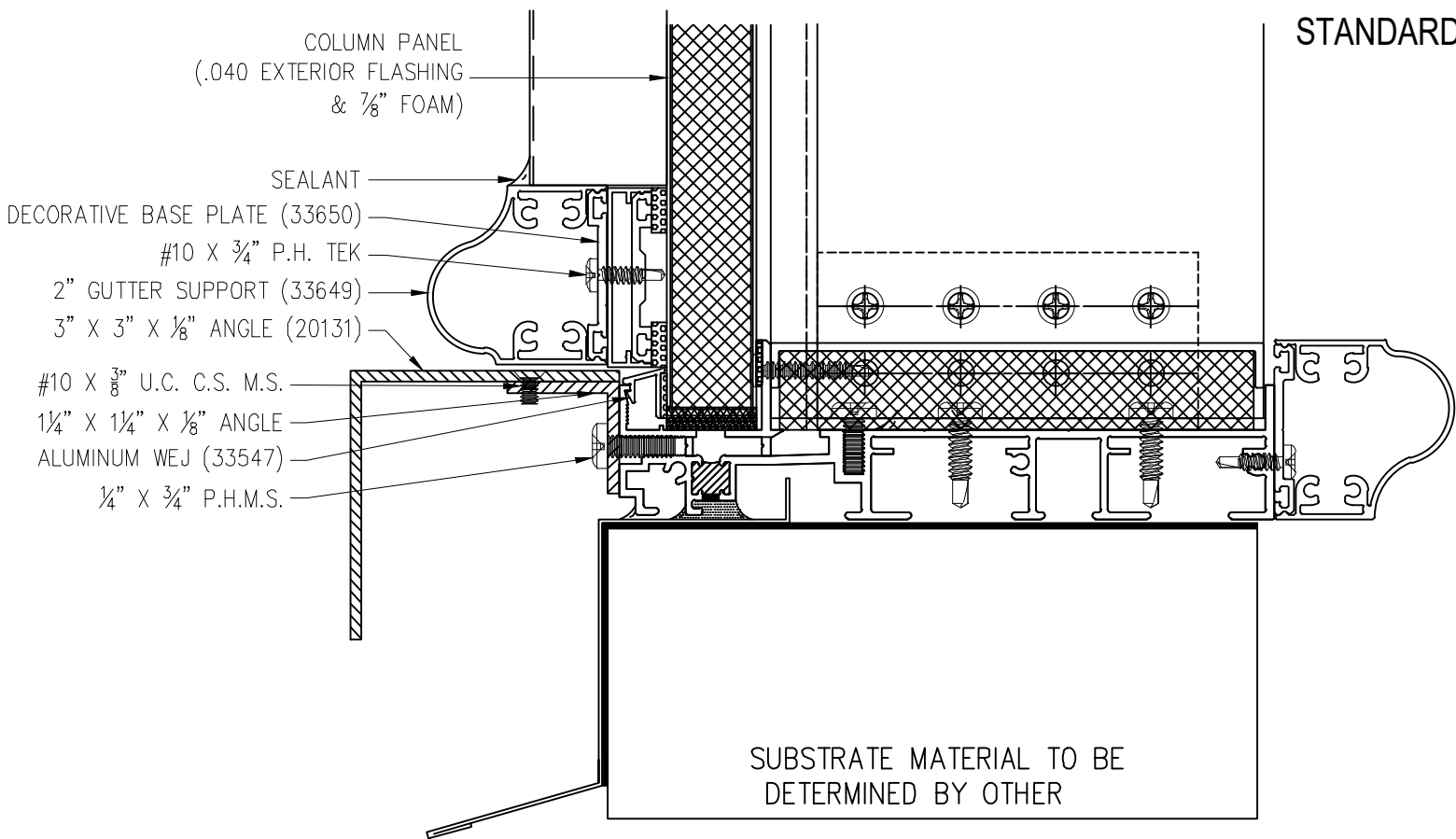


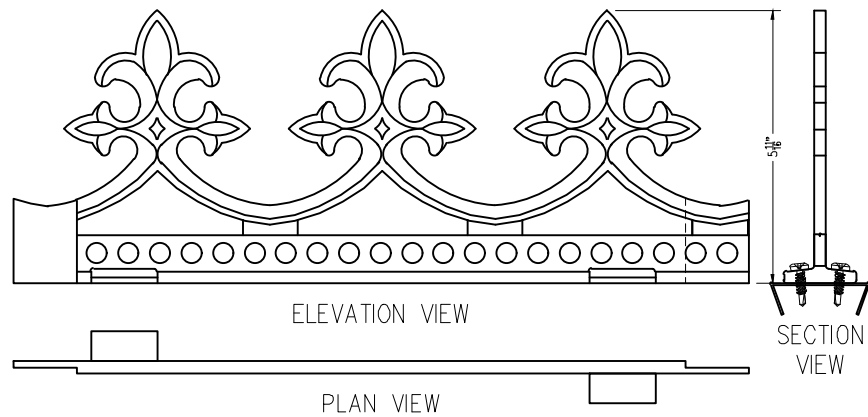
© 2021 Solar Innovations® Architectural Glazing Systems - All Rights Reserved. These plans are the property of Solar Innovations® Architectural Glazing Systems. Any use or reproduction of these plans, in whole or in part, without the written permission of Solar Innovations® Architectural Glazing Systems is forbidden.

CORNER COLUMN  
EAVE SECTION  
STANDARD DETAIL

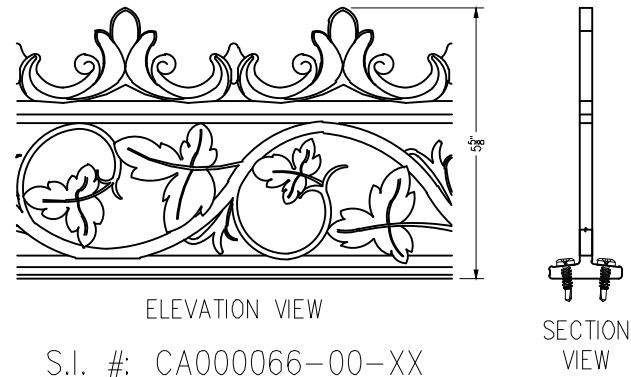


CORNER COLUMN  
SILL DETAIL  
STANDARD DETAIL

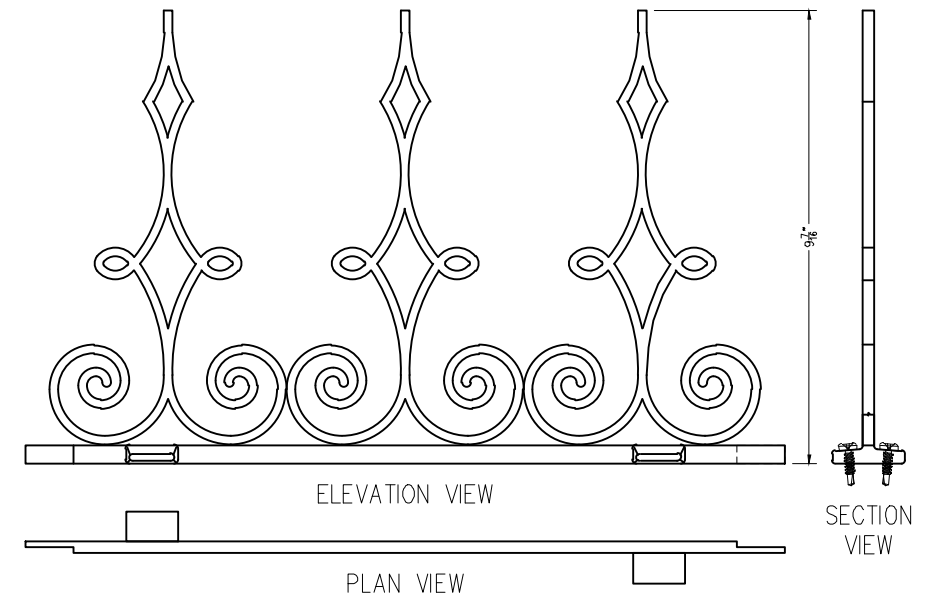




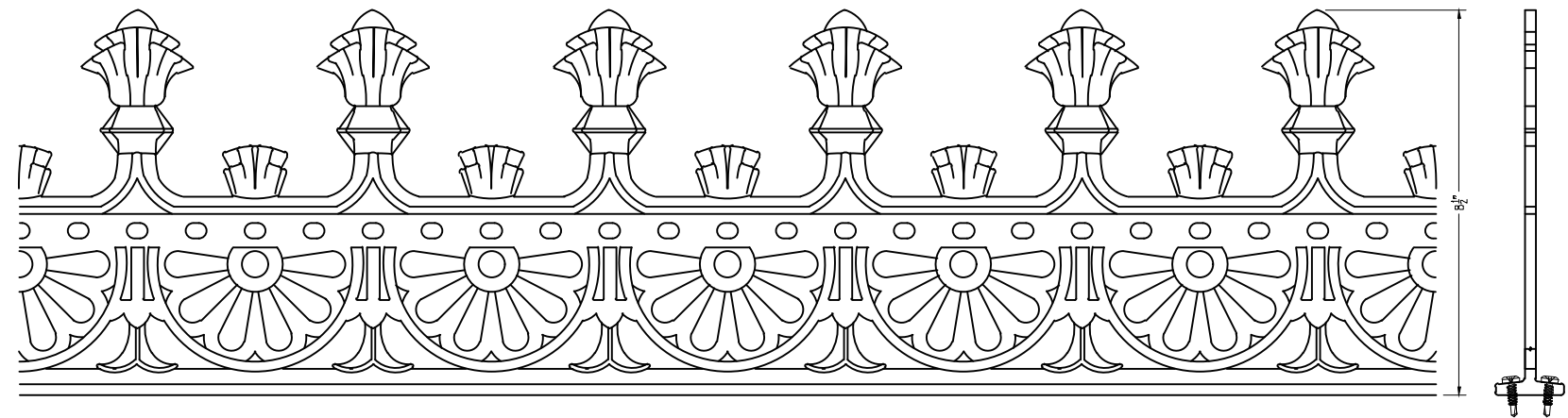
S.I. #: CA000054-00-XX



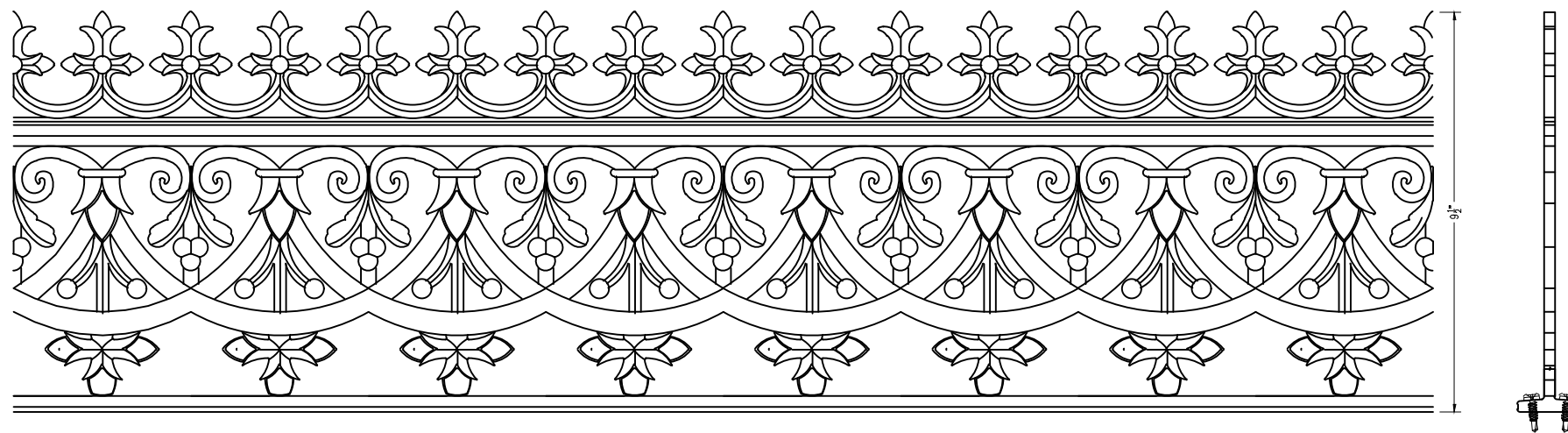
S.I. #: CA000066-00-XX



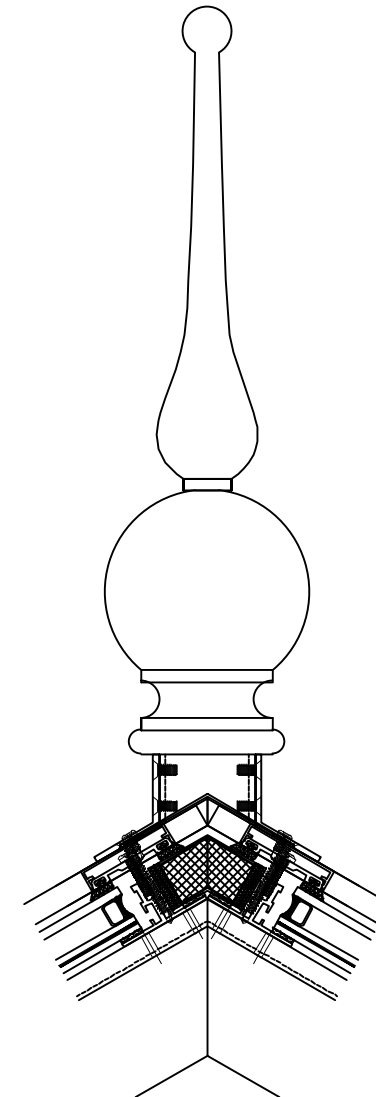
S.I. #: CA000059-00-XX



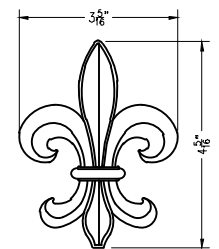
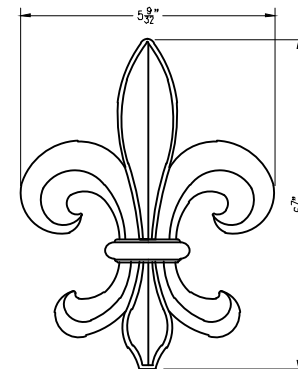
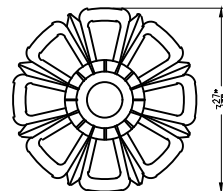
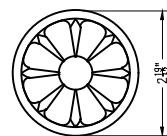
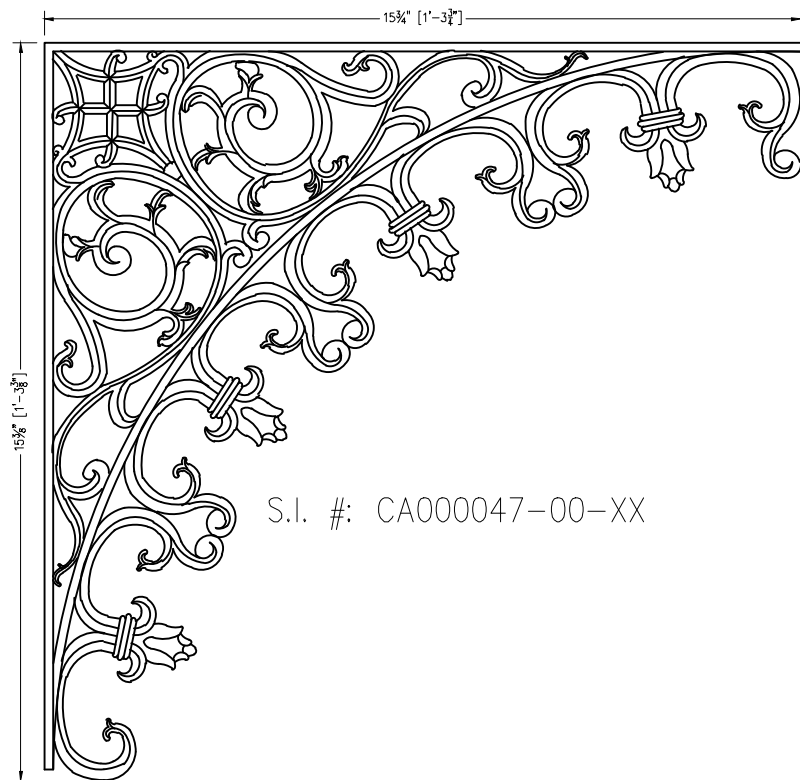
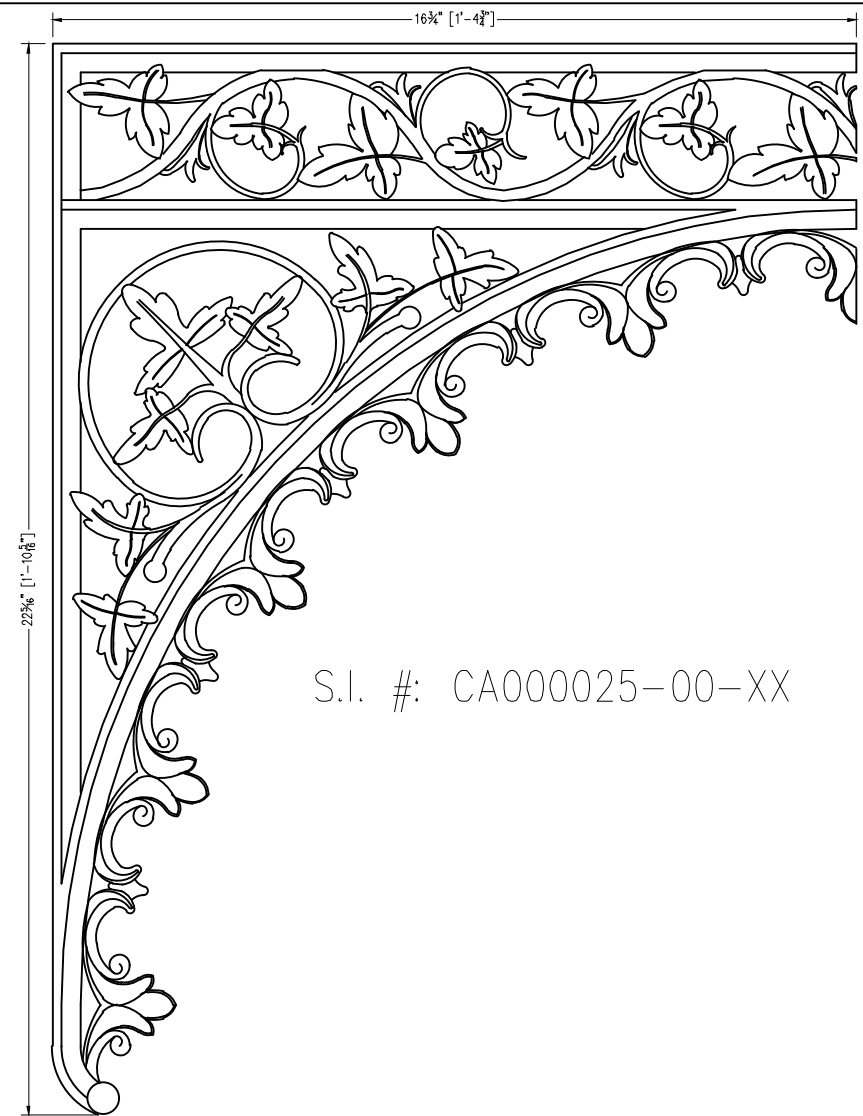
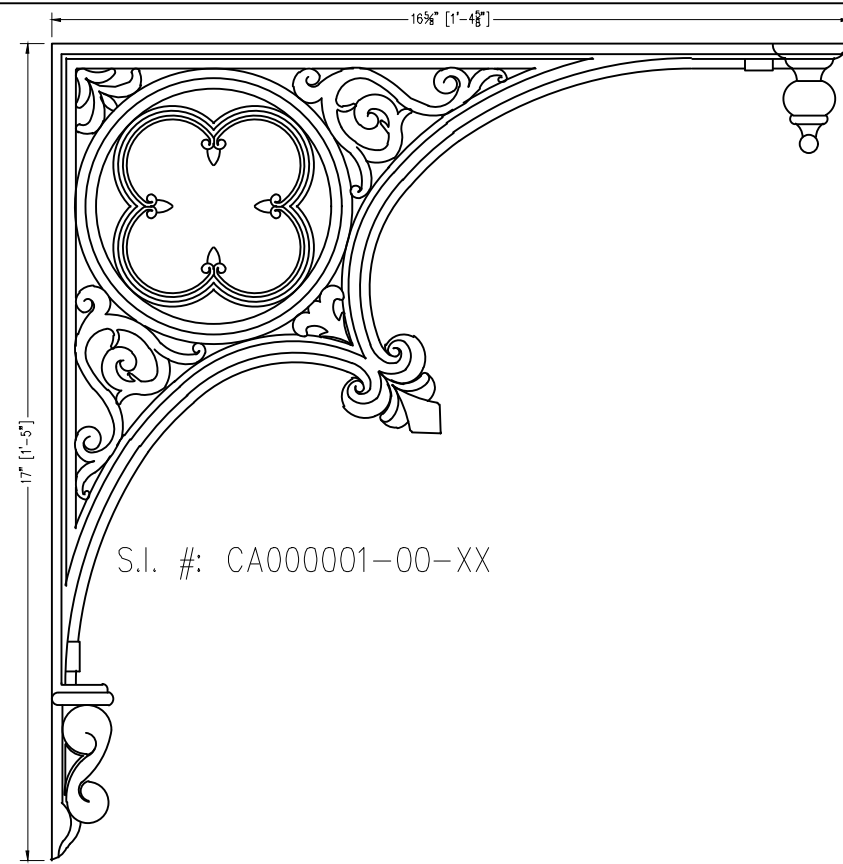
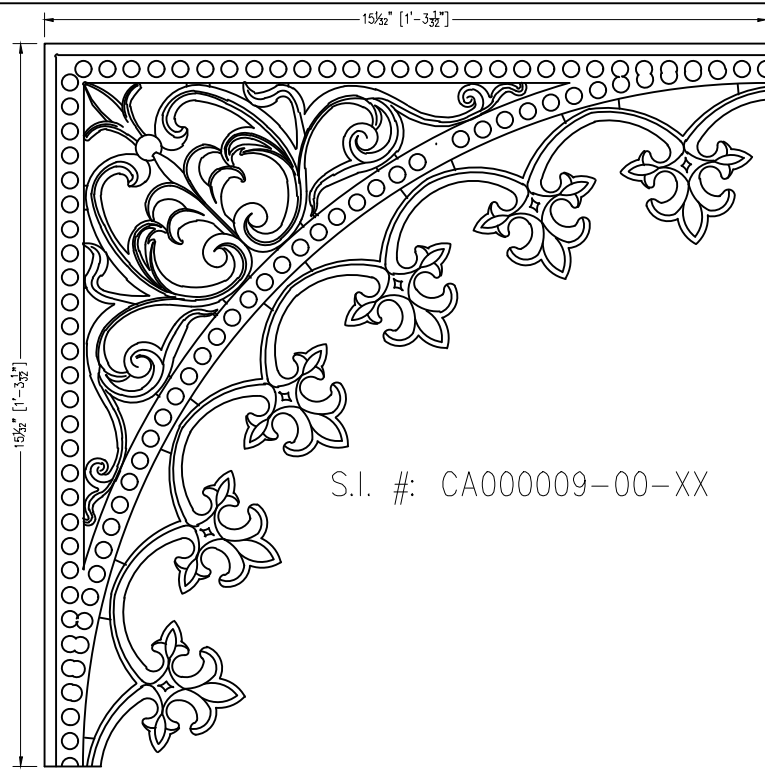
ELEVATION VIEW  
S.I. #: CA000007-00-XX



ELEVATION VIEW  
S.I. #: CA000005-00-XX







# APPLIQUES

S.I. #: CA000035-00-XX

S.I. #: CA000023-00-XX

S.I. #: CA000027-00-XX

S.I. #: CA000033-00-XX